



# COMPREHENSIVE ANNUAL FINANCIAL REPORT

OF THE CITY OF SOUTH MIAMI, FLORIDA  
FOR THE YEAR ENDED SEPTEMBER 30, 2012



PREPARED BY THE FINANCE DEPARTMENT  
Alfredo Riverol, C.P.A., Cr.FA, CGFM, CGMA  
Chief Financial Officer

**COMPREHENSIVE ANNUAL FINANCIAL REPORT**  
**OF THE**  
**CITY OF SOUTH MIAMI, FLORIDA**  
**FOR THE YEAR ENDED**  
**SEPTEMBER 30, 2012**



**Prepared by the**  
**The Finance Department**  
**Alfredo Riverol, CPA, Cr.FA, CGFM, CGMA, Chief Financial Officer**

CITY OF SOUTH MIAMI, FLORIDA  
COMPREHENSIVE ANNUAL FINANCIAL REPORT  
September 30, 2012

TABLE OF CONTENTS

	<u>PAGE</u>
INTRODUCTORY SECTION	
Letter of Transmittal	i-viii
Organizational Chart	ix
List of Principal Officials	x
Certificate of Achievement in Financial Reporting	xi
FINANCIAL SECTION	
Independent Auditors' Report	1-2
Management's Discussion and Analysis (Required Supplementary Information)	3-13
Basic Financial Statements:	
Government-Wide Financial Statements:	
Statement of Net Assets	14
Statement of Activities	15
Fund Financial Statements:	
Balance Sheet-Governmental Funds	16
Reconciliation of the Balance Sheet of Governmental Funds to the Statement of Net Assets	17
Statement of Revenues, Expenditures, and Changes in Fund Balances - Governmental Funds	18
Reconciliation of the Statement of Revenues, Expenditures, and Changes in Fund Balances of Governmental Funds to the Statement of Activities	19
Statement of Fiduciary Net Assets - Fiduciary Funds	20
Statement of Changes in Fiduciary Net Assets - Fiduciary Funds	21
Notes to the Basic Financial Statements	22-49

CITY OF SOUTH MIAMI, FLORIDA  
COMPREHENSIVE ANNUAL FINANCIAL REPORT  
September 30, 2012

TABLE OF CONTENTS  
(continued)

PAGE

REQUIRED SUPPLEMENTARY INFORMATION

Budgetary Comparison Schedules:

General Fund	50-51
Community Redevelopment Agency Fund	52
Notes to Budgetary Comparison Schedules	53-54

Retirement System:

Schedule of Funding Progress - General Employees Pension Trust Fund	55
Schedule of Funding Progress - Police Officers Pension Trust Fund	56
Schedule of Funding Progress - Pay-As-You-Go Approach - Other Post-Employment Health Care Benefits	57

OTHER FINANCIAL INFORMATION

Combining Individual Fund Statements and Schedules:

Combining Balance Sheet - Nonmajor Governmental Funds	58
Combining Statement of Revenues, Expenditures, and Changes in Fund Balances - Nonmajor Governmental Funds	59
Schedules of Revenues, Expenditures, and Changes in Fund Balance - Budget and Actual - Nonmajor Governmental Funds	60-62
Schedule of Revenues, Expenditures, and Change in Fund Balance - Budget and Actual - Capital Improvement Program Fund	63
Schedules of Revenues, Expenditures, and Change in Fund Balance - Budget and Actual - Debt Service Fund	64
Combining Statement of Net Assets - Fiduciary Funds	65
Combining Statement of Changes in Net Assets - Fiduciary Funds	66

STATISTICAL SECTION

Table 1 - Net Assets by Component	67
Table 2 - Changes in Net Assets	68
Table 3 - Fund Balances of Governmental Funds	69

CITY OF SOUTH MIAMI, FLORIDA  
COMPREHENSIVE ANNUAL FINANCIAL REPORT  
September 30, 2012

TABLE OF CONTENTS  
(continued)

	<u>PAGE</u>
Table 4 - Changes in Fund Balances of Governmental Funds	70
Table 5 - Assessed Value and Estimated Actual Value of Taxable Property	71
Table 6 - Property Tax Rates Direct and Overlapping Governments	72
Table 7 - Principal Property Taxpayers	73
Table 8 - Property Tax Levies and Collections	74
Table 9 - Ratios of Outstanding Debt by Type	75
Table 10 - Ratios of General Bonded Debt Outstanding	76
Table 11 - Direct and Overlapping Governmental Activities Debt	77
Table 12 - Legal Debt Margin Information	78
Table 13 - Demographic and Economic Statistics	79
Table 14 - Principal Employers- Miami Dade County, Florida	80
Table 15 - Full Time Equivalent City Government Employees by Function	81
Table 16 - Operating Indicators by Function	82
Table 17 - Capital Asset Statistics by Function/Program	83

COMPLIANCE SECTION

Independent Auditors' Report on Internal Control Over Financial Reporting and on Compliance and Other Matters Based on an Audit of Financial Statements Performed in Accordance with <i>Government Auditing Standards</i>	84-85
Independent Auditors' Report on Compliance with Requirements That Could Have a Direct and Material effect on Each Major Federal Program and on Internal Control Over Compliance in Accordance with OMB Circular A-133	86-87
Independent Auditors' Report to City Management	88-89
Schedule of Expenditures of Federal Awards	90-91
Notes to Schedule of Expenditures of Federal Awards	92
Schedule of Findings and Questioned Costs	93-94

(This page intentionally left blank.)

# INTRODUCTORY SECTION



**CITY OF SOUTH MIAMI**  
6130 Sunset Drive  
South Miami, FL 33143  
Tel. (305) 663-6343 Fax (305) 663-6348



March 28, 2013

Honorable Mayor and Members of the City Commission  
City of South Miami, Florida

Ladies and Gentlemen:

The Comprehensive Annual Financial Report of the City of South Miami, Florida (the "City") for the fiscal year ended September 30, 2012, in accordance with Section 11.45 of the Florida Statutes, is submitted for your review. This report consists of management's representation concerning the finances of the City. Consequently, management assumes full responsibility for the completeness and reliability of all of the information presented in this report. To provide a reasonable basis for making these representations, the management of the City has established a comprehensive internal control framework that is designed both to protect the government's assets from loss, theft, or misuse and to compile sufficient reliable information for the preparation of the City's financial statements in conformity with GAAP. Because the cost of internal controls should not outweigh their benefits, the City's comprehensive framework of internal controls has been designed to provide reasonable rather than absolute assurance that the financial statements will be free from material misstatement. As management, we assert that, to the best of our knowledge and belief, this financial report is complete and reliable in all material respects. All necessary disclosures were included to enable the reader to gain maximum understanding of the City's financial activities for the year. Accordingly, this report consists of four sections; Introductory, Financial, Statistical and Compliance.

The contents of the report is influenced by compliance with Government Accounting Standards Board (GASB) pronouncements, including Statement 34, et al., requiring the preparation of government-wide financial statements on a full accrual basis of accounting for all funds, as well as Management's Discussion and Analysis (MD&A). The MD&A is found immediately after the report of the independent certified public accountants.

The firm of Keefe, McCullough & Co. LLP, licensed certified public accountants, audited the City's financial statements. The goal of the independent audit was to provide reasonable assurance that the basic financial statements of the City for the fiscal year ended September 30, 2012, are free of material misstatement. The independent audit involved examining, on a test basis, evidence supporting the amounts and disclosures in the financial statements; assessing the accounting principles used and significant estimates made by management; and evaluating the overall financial statement presentation. The independent auditor concluded, based upon the audit, that there was a reasonable basis for rendering an unqualified opinion that the City's financial statements for the fiscal year ended September 30, 2012, are fairly presented in conformity with GAAP. The independent auditor's report is presented as the first component of the financial section of this report.

### **ACCOUNTING SYSTEM AND INTERNAL CONTROL**

In the design and direction of the City's accounting system, we followed U.S. generally accepted accounting principles (GAAP) for state and local governments as set forth in the aforementioned statements on governmental accounting and financial reporting. Our accounting records follow the modified accrual basis of reporting revenues and expenditures for all governmental funds, i.e., General Fund and Special Revenue Funds. The Pension Trust Funds are accounted for on the accrual basis. Further explanation of the City's accounting policies is contained in the notes to the financial statements.



## **THE REPORTING ENTITY AND ITS SERVICES**

The City of South Miami, Florida was incorporated in 1927 and is a political subdivision of the State of Florida. The City of South Miami, Florida occupies approximately 2.5 square miles in area, has a population of approximately 13,000 residents, and is empowered by State statute to levy a property tax on real property located within its boundaries. A full complement of municipal services, specifically, Public Safety, General Government, Parks, Culture and Recreation, Solid Waste and Public Works is offered to residents.

The City of South Miami, Florida has operated under the mayor-commission form of government since its was incorporated. Policy-making and legislative authority are vested in the governing principal officials (the "Commission"), which is comprised of the Mayor and four other members. Commission members, including the Mayor are elected every two years. The Commission appoints the City of South Miami, Florida's manager who is then responsible for appointing department heads.

The accompanying financial statements present the government and its component units, entities for which the government is considered financially accountable. Blended component units, although legally separate entities are, in substance, part of the government's operations. The South Miami Community Redevelopment Agency is included as a blended component unit. There are no discretely presented component units.

The Commission is required to adopt an initial budget before the first day of each fiscal year. The annual budget is prepared by fund and is used as an operations guide for all the activities, services and functions carried out by each department. Additionally, the budget provides for performance measurements of organization-wide objectives to aid in monitoring the progress of the City. All departments of the City of South Miami, Florida are required to submit requests for appropriation to the Manager and these requests are the starting point for developing a proposed budget. The Manager then presents this proposed budget to the Commission for review. The Commission is required to hold public hearings on the proposed budget and to adopt a final budget no later than September 30th, the close of the City's fiscal year. The appropriated budget is prepared by fund and departments. No department may expend in excess of amount appropriated within an individual fund without the approval of the Commission. The Manager may make transfers of appropriations within a department. Transfers of appropriations between departments require the approval of the Commission through a budget amendment process. The Commission approves supplemental appropriations. Budget to actual comparisons are provided in this report for the General Fund, and all other funds, for which an appropriated annual budget has been adopted.

## **ECONOMIC OUTLOOK**

The City of South Miami is primarily a residential community composed of approximately 13,000 residents. The majority of persons employed within the City are in professional/specialty, administrative support and executive/administrative/management positions. City residents are primarily employed in jobs throughout Miami-Dade County.

The City's downtown business district is composed of three blocks located on Sunset Drive featuring specialty shops with restaurants on the side streets and three blocks on the west side of Red Road both north and south of Sunset Drive. Also located within the City are two medical facilities, South Miami Hospital and Larkin Hospital, considered two of the finest medical facilities in the metropolitan area.

In addition to the Miami-Dade County Transit System servicing the City, the Metro-Rail system also passes through the City with a station located off Sunset Drive and U.S. 1. The Miami International Airport is within 30 minutes from downtown South Miami.

The City is located right in the center of Metropolitan Miami-Dade County abutting several other municipalities in the area. Numerous major attractions are situated in close proximity to the City. As with many businesses in the County, local businesses benefit from sizeable tourist trade. The City of South Miami owns a multi-use public parking garage facility, which was completed on November 2007. In the past years, the Shops of Sunset leased space to several new national chain retail stores and restaurants.

The major mixed-use development entitled Red Road Commons, adjacent to the South Miami Metro Rail Station, provides over 400 new residential units and affordable housing units.

### **LONG TERM FINANCIAL PLANNING AND MAJOR INITIATIVES**

The City of South Miami, Florida strives to link its vision for the future, departmental goals and objectives, and the allocation of its financial and human resources. The vision of the City of South Miami's management is to provide a safe, secure and attractive environment for its residents to live, work and play. This framework is reflected in the City's general fund budget of which approximately 70% of operating expenditures is allocated to public safety, public works and culture and recreation.

Despite the current economic environment and the decline in the real estate market, the City has remained financially stable. Assessed values have shown a modest increase for fiscal year 2013, and demand driven revenues such as franchise fees and shared revenues are predicted to have modest increases as well. However, overall growth has been slow and is anticipated to remain this way for the next few years. The City has made prudent decisions in the past years, and will continue to do so in the current and future years, in an effort to maintain a financial sustainable City.

Unassigned fund balance in the General Fund at year-end was \$ 6,144,002 representing 40% of the total operating expenditures. This amount was within the policy guidelines set by the City Commission for budgetary and planning purpose (20% to 50%). In addition, the City maintains an emergency and disaster recovery operating reserve, stabilization arrangement, amounting to \$ 1,688,739 at year-end.

The City is currently working to establish a detailed financial forecasting for significant capital improvement projects to better serve its residents. Certain projects completed in prior fiscal years have been financed with bonds, loans and capital leases which had balances totaling \$15.5 million at September 30, 2012.

The Community Redevelopment Agency (CRA), a blended component unit of the City, was created in 1998 to bring economic revitalization to the depressed area of the City through tax increment financing. The agency obtains its funds through annual contributions from Miami-Dade County and the City from the tax revenue generated from increase in property assessment of the designated area. The agency ended its fifth fiscal year of operations in September 2005. On May 3, 2005, the Miami-Dade County Commission approved Resolution R-466-05, extending the life of the CRA for fifteen (15) years beyond the June 1, 2005 sunset provision of the CRA's Interlocal Agreement with the County. However, the renewal included a sunset review within two (2) years of this extension. As part of the fifteen-year extension, the Miami-Dade County Commission mandated that the CRA must obtain long-term financing that is supported by tax increment revenues to fund the second phase of the Plan within the two (2) year period ended June 1, 2007. In November 2006, the City, through its Community Redevelopment Agency, issued \$ 2,730,000 of Taxable Redevelopment Revenue Bonds, Series 2006 to acquire various properties located within the boundaries of the South Miami Community Redevelopment Area. The City continues reviewing its land use codes for any changes that may be implemented to improve the area. The Agency previously acquired several properties within its area of operations for development purposes, and has provided zero to low interest rate loans to residents of the area to improve their properties.

The City continues its efforts in “going paperless” by purchasing and implementing a central universe repository system. The new system serves as the universal repository, granting users across the enterprise instant access to the information they need to complete their jobs quickly and efficiently. Additionally, it reduces the resource utilization inherent with paper-based processes. The purpose of this new system is to gain a single point of control over all information assets throughout their life cycles, quick and easy access, remove the need for time-consuming manual filing by automatically indexing and filing incoming paperwork, and protect confidential files with granular, role-based security. As the demand for government transparency continues to grow, the City needs an efficient, cost-effective solution for making information available to citizens. The system offers an easy-to-navigate web portal making documents available to the public—while still keeping the core repository secure.

The City’s parking infrastructure is one of the major providers of revenue for the General Fund. The division was assigned to the Police Department in an effort to streamline the process and provide greater level of efficiency and effectiveness. The City previously initiated enhancement to the infrastructure by installing 38 new multi-space parking pay stations. This parking enhancement was implemented to better serve residents, businesses, and visitors by providing ease of payment. The project was a great success, provided and increased parking revenue by approximately 25% as of September 30, 2011. During fiscal year 2012, the City expanded the project by adding 12 additional pay stations which resulted in an increase of parking revenues by 12% over 2011. The completed project covers all of the South Miami Downtown area, South Miami Hospital and the shops at Bird Road.

As part of the continued commitment to the South Miami Downtown economic development, the City will be implementing “Wireless Downtown” for residents and visitors to access. The wireless infrastructure will also provide secure access to the existing multi-space parking meters as well as the City’s public safety officers to communicate with required servers. The savings from the air cards which are currently used by each of the existing multi-space parking meters to communicate to the servers will provide the savings needed to pay for the wireless infrastructure within a 3.5 year period.

The City is committed to completing multiple traffic calming projects throughout the City. The specific communities which the City is focusing on in FY 2013 are Pinecrest Villas, Mango Terrace, SW 64th Street between SW 57th Avenue and SW 62nd Avenue and Manor Lane. The City continues to work with Miami-Dade County in achieving their full requirements.

The City Administration is planning to relocate the Building, Code Enforcement and Central Services Division from the current City Hall to the Historical Sylva Martin Building. The relocation will help in the required renovations of the Sylva Martin Building along with bringing a large section of governmental departments under one roof within the new administration area, hence increasing efficiencies and effectiveness for the residents, businesses, and overall all visitors to the City. This revitalized facility and its operational program will enable customers to visit one location for the majority of city services.

To continue maintaining a safe and efficient fleet, the City will be purchasing six new police vehicles and one new GEM Parking Enforcement Electric Vehicle. The upgrades of the City’s fleet are required to continue providing sufficient services to the residents of the City. The older police vehicles that are replaced will backfill those vehicles in the city fleet that are determined at exceeding their useful life and auctioned.

## **FINANCIAL POLICIES**

### **Investment Policy**

The City's investment policy was established to optimize investment returns while providing for daily cash needs. Investment options include the safest types of securities to protect the funds of the City and minimize potential losses. Non-Pension idle cash balances are held overnight in interest bearing accounts and funds available for longer-term investment are placed in money markets and certificates of deposit at competitive interest rates. Pension fund investments are maintained by an investment manager under the guidance of the pension board. All investment decisions are within the constraints imposed by Florida Statutes, Ordinances, and Resolutions of the City Commission.

### **Capital Financing**

The City has established a formal policy to account for multi-year expenditures of major capital projects and expenditures for all General Government programs. In fiscal year 2012, the City established a Capital Improvements Fund to facilitate the reporting of these expenditures. The fund receives transfers from the General Fund based on the long-term capital budgeted needs of the various City departments and the Recreation programs.

### **Debt Policy**

The City previously established a formal debt service policy and a debt service fund. In general, long term borrowings, with maturities greater than five years, are accounted for in this fund. It is also used to account for financial resources that are restricted, committed or assigned to expenditure for principal and interest. The City seeks to maintain the highest bond rating to minimize borrowing costs. Debt is issued when necessary to finance capital projects, but is never used for current operations. The City reviews and evaluates its existing obligations and future borrowing needs regularly.

### **Fund Balance Policy**

The City's Fund Balance Policy was developed to ensure adequate fund balance for the City's governmental funds. The intent of this policy is to 1) provide sufficient cash flow for daily financial needs; 2) secure and maintain investment grade bond ratings; 3) offset significant economic downturns and revenue shortfalls; and 4) provide funds for unforeseen expenditures related to emergencies.

The City of South Miami, Florida, has established a policy by ordinance (No. 23-08-1958) to maintain an emergency and disaster recovery operating reserve, stabilization arrangement, at a minimum of 10% of its general fund budgeted expenditures. The City's policy also requires that the unassigned fund balance within the general fund be maintained at a range between 20% to 50% of the annual expenditures.

## **RETIREMENT BENEFITS**

The City of South Miami sponsors two defined benefit pension plans, the General Employees' Pension Plan and the Police Officers Pension Plan. These two pension plans are administered through one independent Pension Board. The Pension Board hires an outside pension plan administrator to administer the plans. Each year, an independent actuary, engaged by the Board calculates the amount of annual contribution that the City of South Miami must make to each pension plan to ensure that the plans are actuarially sound. As a matter of policy, the City of South Miami fully funds each year's annual required contribution to the pension plan as determined by the actuary.

Regular full-time employees of the City hired prior to October 1, 2011 must become participants upon completion of six months of service. Police officers become eligible to enter the plan as of the date of employment.

All regular full-time employees hired on or after October 1, 2011 are no longer eligible to participate in the General Employees' Pension Plan. A 401(a) / 457(b) combination deferred compensation plan was created to provide these employees retirement benefits if they wish to participate. Contributions to the combined 401(a) / 457(b) deferred compensation are matched by the City in amounts ranging from 3% to 7%.

The Police Officers Retirement Trust Fund – Section 185 Plan accounts for State of Florida contributions for pension benefit payments to qualified public safety employees.

The City also provides a defined contribution Section 457(b) deferred compensation plan for all its employees and a 401(a) money purchase plan for certain employees of upper management.

### MAJOR INDUSTRIES AND/OR SERVICE CENTERS

The City's economy is greatly influenced by the economic condition of the entire Miami-Dade County. The major businesses in the City are service-oriented with health care, professionals, and retail shop operators being the main employers. Below is the breakdown of businesses within the City by category.

<u>INDUSTRY</u>	<u>Number of Establishments</u>
Construction	294
Manufacturing	308
Wholesale trade	256
Retail trade	310
Transportation and warehousing, and utilities	357
Information	186
Finance and insurance, and real estate and rental leasing	363
Professional, scientific, and management, and administrative and waste management services	896
Educational services, and health care and social assistance	1,418
Arts, entertainment, and recreation and accomodation and food services	602
Other services, except public administration	285
Public administration	335
<b>Total for all sectors</b>	<b>5,610</b>

Source: U.S. Census Bureau 2010 Industry Code Summary

## AWARDS



The Governmental Finance Officers Association of the United States and Canada (GFOA) awarded a **Certificate of Achievement for Excellence in Financial Reporting** to the City for its Comprehensive Annual Financial Report for the fiscal year ended September 30, 2011. In order to be awarded a Certificate of Achievement; a government must publish an easily readable and efficiently organized Comprehensive Annual Financial Report. This report must satisfy both generally accepted accounting principles and applicable legal requirements.

A Certificate of Achievement is valid for a period of one year only. We believe that our current report continues to conform to the Certificate of Achievement Program requirements and we are submitting it to the GFOA to determine its eligibility for another certificate.

---

The Government Finance Officers Association of the United States and Canada (GFOA) presented a **Distinguished Budget Presentation Award** to City of South Miami, Florida for its annual budget for the fiscal year beginning October 1, 2011. In order to receive this award, a governmental unit must publish a budget document that meets program criteria as a policy document, as an operations guide, as a financial plan, and as a communications device.



This award is valid for a period of one year only. We believe our current budget continues to conform to program requirements, and we are submitting it to GFOA to determine its eligibility for another award.



The Government Finance Officers Association of the United States and Canada (GFOA) has given an **Award for Outstanding Achievement in Popular Annual Financial Reporting** to City of South Miami, Florida for its Popular Annual Financial Report for the fiscal year ended September 30, 2011. The Award for Outstanding Achievement in Popular Annual Financial Reporting is a prestigious national award recognizing conformance with the highest standards for preparation of state and local government popular reports.

In order to receive an Award for Outstanding Achievement in Popular Annual financial reporting, a government unit must publish a Popular Annual Financial Report, whose contents conform to program standards of creativity, presentation, understandability, and reader appeal.

The Award for Outstanding Achievement in Popular Annual Reporting is valid for a period of one year only. We believe our current report continues to conform to the Popular Annual Financial Reporting requirements, and we are submitting it to GFOA.

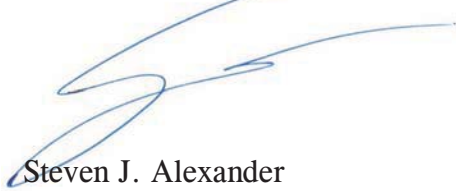
## ACKNOWLEDGEMENTS

The preparation of this report could not have succeeded without the efficient and dedicated services of the entire staff of the Finance Department.


We express our appreciation to all members of the Finance Department who assisted and contributed to the preparation of this report, and to the various Departments who contributed the necessary statistical data. Our thanks and appreciation is also extended to the accounting firm of Keefe, McCullough & Company for the professional approach and high standards in the conduct of their independent audit of the City's financial records and transactions.

Finally, our thanks to the Mayor and City Commission for their guidance and cooperation in planning and conducting the financial affairs of the City in a responsible and progressive manner.

Respectfully submitted,

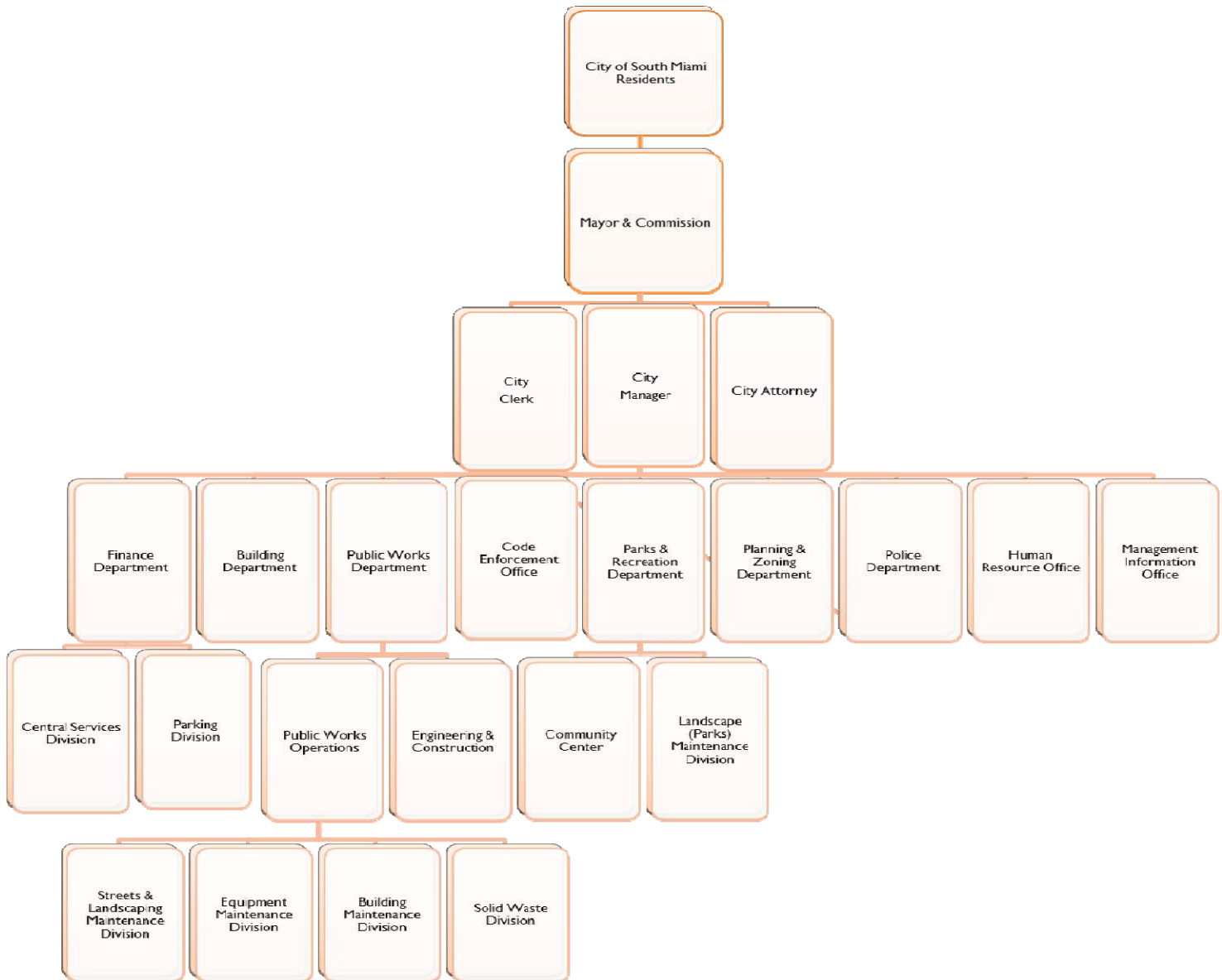


Steven J. Alexander  
Interim City Manager



Alfredo Riverol, CPA, Cr.FA , CGFM, CGMA  
Chief Financial Officer

# CITY OF SOUTH MIAMI, FLORIDA ORGANIZATIONAL CHART





**CITY OF SOUTH MIAMI, FLORIDA  
COMMISSION - MANAGER FORM OF GOVERNMENT  
LIST OF PRINCIPAL OFFICIALS**

**CITY COMMISSION**



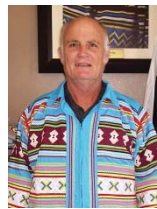
**PHILIP K. STODDARD, Ph.D**  
Mayor



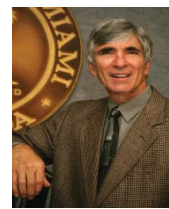
**VALERIE NEWMAN**  
Commissioner  
Group I



**JOSH LIEBMAN**  
Vice Mayor  
Group II



**BOB WELSH, JR.**  
Commissioner  
Group III



**WALTER A. HARRIS**  
Commissioner  
Group IV

**MANAGEMENT TEAM**

**STEVEN J. ALEXANDER**  
Interim City Manager

**THOMAS F. PEPE, ESQ.**  
City Attorney

**MARIA M. MENENDEZ**  
City Clerk

**ALFREDO RIVEROL, C.P.A. Cr.FA, CGFM, CGMA**  
Chief Financial Officer

**ORLANDO MARTINEZ DE CASTRO**  
Police Chief

**JORGE VERA**  
Capital Projects Manager

**LORENZO WOODLEY**  
Parks and Recreation Director

**CHRISTOPHER BRIMO**  
Planning and Zoning Director

**VICTOR CITARELLA**  
Building Director

**KELLY BARKET**  
Chief Superintendent

**LATASHA NICKLE, ESQ.**  
Human Resources Director

**CERTIFIED PUBLIC ACCOUNTANTS**

Keefe, McCullough & Co., LLP

# Certificate of Achievement for Excellence in Financial Reporting

Presented to

City of South Miami  
Florida

For its Comprehensive Annual  
Financial Report  
for the Fiscal Year Ended  
September 30, 2011

A Certificate of Achievement for Excellence in Financial Reporting is presented by the Government Finance Officers Association of the United States and Canada to government units and public employee retirement systems whose comprehensive annual financial reports (CAFRs) achieve the highest standards in government accounting and financial reporting.



*Christopher P. Morill*  
President

*Jeffrey R. Egan*  
Executive Director

# FINANCIAL SECTION



## INDEPENDENT AUDITORS' REPORT

To the Honorable Mayor,  
Members of the City Commission, and City Manager  
City of South Miami, Florida

We have audited the accompanying financial statements of the governmental activities, each major fund and the aggregate remaining fund information of the City of South Miami, Florida (the "City"), as of and for the year ended September 30, 2012, which collectively comprise the City's basic financial statements as listed in the table of contents. These financial statements are the responsibility of the City's management. Our responsibility is to express opinions on these financial statements based on our audit. We did not audit the financial statements of the Police Officers Retirement Trust Fund - Section 185 Plan, which represent 4%, 2%, and 4%, respectively, of the assets, net assets and total additions of the Fiduciary Funds. Those financial statements were audited by other auditors whose report thereon has been furnished to us, and our opinion, insofar as it relates to the amounts included for Police Officers Retirement Trust Fund - Section 185 Plan, is based on the report of the other auditors.

We conducted our audit in accordance with auditing standards generally accepted in the United States of America and the standards applicable to financial audits contained in *Government Auditing Standards*, issued by the Comptroller General of the United States. Those standards require that we plan and perform the audit to obtain reasonable assurance about whether the financial statements are free of material misstatement. An audit includes examining, on a test basis, evidence supporting the amounts and disclosures in the financial statements. An audit also includes assessing the accounting principles used and significant estimates made by management, as well as evaluating the overall financial statement presentation. We believe that our audit and the report of other auditors provide a reasonable basis for our opinions.

In our opinion, based on our audit and the report of the other auditors, the financial statements referred to above present fairly, in all material respects, the respective financial position of the governmental activities, each major fund and the aggregate remaining fund information of the City as of September 30, 2012, and the respective changes in financial position for the year then ended in conformity with accounting principles generally accepted in the United States of America.

In accordance with *Government Auditing Standards*, we have also issued our report dated March 28, 2013, on our consideration of the City's internal control over financial reporting and on our tests of its compliance with certain provisions of laws, regulations, contracts, grant agreements and other matters. The purpose of that report is to describe the scope of our testing of internal control over financial reporting and compliance and the results of that testing, and not to provide an opinion on internal control over financial reporting or on compliance. That report is an integral part of an audit performed in accordance with *Government Auditing Standards* and should be considered in assessing the results of our audit.

Accounting principles generally accepted in the United States of America require that the management's discussion and analysis and the pension and other post-employment health care benefits schedules of funding progress on pages 3 through 13 and pages 55 through 57, respectively, be presented to supplement the basic financial statements. Such information, although not a part of the basic financial statements, is required by the Governmental Accounting Standards Board, who considers it to be an essential part of financial reporting for placing the basic financial statements in an appropriate operational, economic, or historical context. We and the other auditors have applied certain limited procedures to the required supplementary information in accordance with auditing standards generally accepted in the United States of America, which consisted of inquiries of management regarding the methods of preparing the information and comparing the information for consistency with management's responses to our inquiries, the basic financial statements, and other knowledge we obtained during our audit of the basic financial statements. We do not express an opinion or provide any assurance on the information because the limited procedures do not provide us with sufficient evidence to express an opinion or provide any assurance.

Our audit was conducted for the purpose of forming opinions on the financial statements that collectively comprise the City's financial statements as a whole. The introductory section, combining and individual nonmajor fund financial statements, budgetary comparison schedules and statistical section are presented for purposes of additional analysis and are not a required part of the basic financial statements. The accompanying Schedule of Expenditures of Federal Awards is presented for purposes of additional analysis as required by U.S. Office of Management and Budget Circular A-133, *Audits of States, Local Governments and Non-Profit Organizations* and is also not a required part of the financial statements. The budgetary comparison schedules and combining and individual nonmajor fund financial statements and the Schedule of Expenditures of Federal Awards are the responsibility of management and were derived from and relate directly to the underlying accounting and other records used to prepare the financial statements. The information has been subjected to the auditing procedures applied by us in the audit of the financial statements and certain additional procedures, including comparing and reconciling such information directly to the underlying accounting and other records used to prepare the financial statements or to the financial statements themselves, and other additional procedures in accordance with auditing standards generally accepted in the United States of America. In our opinion, the information is fairly stated in all material respects in relation to the financial statements as a whole. The introductory and statistical sections have not been subjected to the auditing procedures applied in the audit of the basic financial statements and, accordingly, we do not express an opinion or provide any assurance on them.

*Keefe, McCullough & Co., LLP*

KEEFE, McCULLOUGH & CO., LLP

Fort Lauderdale, Florida  
March 28, 2013

**CITY OF SOUTH MIAMI, FLORIDA**  
**MANAGEMENT'S DISCUSSION AND ANALYSIS**  
September 30, 2012

The management of the City of South Miami, Florida (the "City") included this section in the Comprehensive Annual Financial Report ("CAFR") in accordance with the Governmental Accounting Standards Board (GASB) Statement Number 34, et al. It is intended to provide readers of this report the narrative overview and analysis of the financial activities of the City for fiscal year ended September 30, 2012. Readers are encouraged to consider the information presented here in conjunction with additional information that is furnished in the letter of transmittal, the City's financial statements, and the other required supplemental information.

This discussion and analysis is designed to (a) assist the reader in focusing on significant financial issues, (b) provide an overview of the City's financial activity, (c) identify changes in the City's financial position (its ability to address the next and subsequent year challenges), (d) identify any material deviations from the financial plan (the approved budget), and (e) identify individual fund issues or concerns. The information contained within this section should be considered only a part of a greater whole.

**FINANCIAL HIGHLIGHTS**

The following are the highlights of financial activity for the fiscal year ending September 30, 2012:

- The assets of the City exceeded its liabilities at the close of the most recent fiscal year by \$ 38,993,482 (net assets). Of this amount, \$ 7,956,237 is unrestricted.
- The City's \$ 21,364,698 in revenues from governmental activities exceeded the \$ 19,142,606 in expenses, providing a \$ 2,222,092 increase in net assets.
- At the end of the current year, fund balance for the General Fund was \$ 8,658,983, or 53% of total general fund revenues. Of this amount \$ 1,892,593 is reported as non-spendable-prepaid expenditures and committed to emergency and disaster recovery operating reserves.
- The current year's unassigned fund balance for the General Fund is \$ 6,144,002 million, or 38% of total General Fund operating revenues.
- The General Fund's fund balance decreased by \$ 839,691 for the year ended September 30, 2012.

**OVERVIEW OF THE FINANCIAL STATEMENTS**

The financial section of this annual report consists of four parts: management's discussion and analysis (this section), the basic financial statements, required supplementary information and an additional section that presents combining statements for non-major governmental funds, and fiduciary funds. The basic financial statements include two kinds of statements that present different views of the City:

- The first two statements are government-wide financial statements that provide both long-term and short-term information about the City's overall financial status.
- The remaining statements are fund financial statements that focus on individual parts of the City government, reporting the City's operations in more detail than the government-wide statements.

CITY OF SOUTH MIAMI, FLORIDA  
MANAGEMENT'S DISCUSSION AND ANALYSIS  
September 30, 2012

- The governmental funds statements show how general government services such as public safety were financed in the short term as well as what remains for future spending.
- Fiduciary funds statements provide information about the financial relationships in which the City acts solely as a trustee or agent for the benefit of those parties outside of the government.

The financial statements also include notes that explain some of the information in the financial statements and provide more detailed data. The statements are followed by a section of required supplementary information which further explains and supports this information. In addition to these required elements, we include a section with combining statements that provide details about our non-major governmental funds, each of which is added together and presented in a single column in the basic financial statements.

Government-wide financial statements:

The government-wide financial statements are designed to provide readers with a broad overview of the City's finances, in a manner similar to a private-sector business. The statement of net assets presents information on all of the City's assets and liabilities, with the difference between the two reported as net assets. Over time, increases or decreases in net assets may serve as a useful indicator of whether the financial position of the City is improving or deteriorating.

The statement of activities presents information showing how the City's net assets changed during the most recent fiscal year. All changes in net assets are reported as soon as the underlying event giving rise to the change occurs, regardless of the timing of related cash flows. Thus, revenues and expenses are reported in this statement for some items that will only result in cash flows in future fiscal periods (e.g., uncollected intergovernmental revenues, OPEB obligation, and earned but unused vacation leave).

Both of the government-wide financial statements distinguish functions of the City that are principally supported by taxes and intergovernmental revenues (governmental activities), and from other functions that are intended to recover all or a significant portion of their costs through user fees and charges (business-type activities). The government activities of the City include public safety, public works, culture and recreation, code compliance, planning and zoning, community services, economic development and general administration services. There are no business-type activities.

Additionally, the City has two separate single-employer defined benefit pension plans, 401(a) plans for the City Manager, Chief of Police, senior level staff who elect to participate, and a voluntary Section 457 defined contribution plan for all interested employees. During the current fiscal year, the City also established a combined 457(b)/401(a) defined contribution for all employees who wish to participate. The City's defined benefit pension plans are reported as Fiduciary Funds in the fund financial statements of this report, but are not included in the government-wide statements.

The government-wide financial statements can be found on pages 14 and 15 of this report.

Fund financial statements:

A fund is a grouping of related accounts that is used to maintain control over resources that were segregated for specific activities or objectives. The City, like other state and local governments, uses fund accounting to ensure and demonstrate compliance with finance-related legal requirements. All of the funds of the City can be divided into two categories: governmental funds and fiduciary funds.

CITY OF SOUTH MIAMI, FLORIDA  
MANAGEMENT'S DISCUSSION AND ANALYSIS  
September 30, 2012

Governmental funds:

Governmental funds are used to account for essentially the same functions reported as governmental activities in the government-wide financial statements. However, unlike the government-wide financial statements, governmental fund financial statements focus on near-term inflows and outflows of spendable resources, as well as on balances of spendable resources available at the end of the fiscal year. Such information may be useful in evaluating a government's near-term financing requirements.

Because the focus of governmental funds is narrower than that of the government-wide financial statements, it is useful to compare the information presented for governmental funds with similar information presented for governmental activities in the government-wide financial statements. By doing so, readers may better understand the long-term impact of the government's near-term financing decisions. Both the governmental fund balance sheet and the governmental fund statement of revenues, expenditures, and changes in fund balances provide a reconciliation to facilitate this comparison between governmental funds and governmental activities.

The City maintains several individual governmental funds. Information is presented separately in the governmental fund balance sheet and in the governmental fund statement of revenues, expenditures, and changes in fund balances for the General Fund and those major funds. Data from the other governmental funds is combined into a single, aggregated presentation. Individual fund data for each of these non-major governmental funds is provided in the form of combining statements. Governmental fund statements (general and major funds) are found on pages 16 and 18. Combining nonmajor governmental fund statements are found on pages 58 and 59.

Budgetary comparison schedules are provided for the General Fund and all funds with a legally adopted budget to demonstrate compliance with the budgetary basis. Budgetary comparison schedules can be found on pages 50 through 54 and 60 through 64.

Fiduciary funds:

Fiduciary funds are used to account for resources held for the benefit of parties outside the government. Fiduciary funds are not reflected in the government-wide financial statement because the resources of those funds are not available to support the City of South Miami's own programs. The accounting used for fiduciary funds is much like that used for proprietary funds. The basic fiduciary fund financial statements can be found on pages 20 and 21 of this report. Individual fund data for the Fiduciary Funds is provided in the form of combining statements on pages 65 and 66.

Notes to the financial statements:

The notes provide additional information that is essential to a full understanding of the data provided in the government-wide and fund financial statements. The notes to the financial statements can be found on pages 22 through 49 of this report.

Other information:

In addition to the basic financial statements and accompanying notes, this report also presents certain required supplementary information concerning the City's progress in funding its obligation to provide pension benefits to its employees, other post-employment health care benefits, and budgetary comparison schedules for the General Fund.

The combining statements referred to earlier in connection with non-major governmental funds are presented immediately following the required supplementary information. Combining and individual fund statements can be found on pages 58 and 59 of this report.



CITY OF SOUTH MIAMI, FLORIDA  
MANAGEMENT'S DISCUSSION AND ANALYSIS  
September 30, 2012

Our analysis of the financial statements of the City begins below. The Statement of Net Assets and the Statement of Activities report information about the City's activities will help answer questions about the position of the City.

**GOVERNMENT-WIDE FINANCIAL ANALYSIS**

Statement of Net Assets:

As noted earlier, net assets may serve over time as a useful indicator of a government's financial position. There are six basic transactions that will affect the comparability of the Statement of Net Assets summary presentation as reflected below:

- 1) **Net results of activities** will impact (increase/decrease) current assets and unrestricted net assets.
- 2) **Borrowing for capital** will increase current assets and long-term debt.
- 3) **Spending borrowed proceeds on new capital** will reduce current assets and increase capital assets. There is a second impact, an increase in invested in capital assets and an increase in related net debt which will typically not change the invested in capital assets, net of related debt.
- 4) **Spending of non-borrowed current assets on new capital** will reduce current assets and increase capital assets and increase invested in capital assets, net of related debt.
- 5) **Principal payment on debt** will reduce current assets and reduce long-term debt and reduce unrestricted net assets and increase invested in capital assets, net of related debt.
- 6) **Reduction of capital assets through depreciation** will reduce capital assets and invested in capital asset, net of related debt.

The City's net assets were \$ 38,993,482 in fiscal year 2012 (see Table 1). This amount came solely from governmental activities because the City has no business-type activities. Restricted net assets and net assets invested in capital assets, net of related debt, amounted to 80% of total net assets. The largest portion of the net assets (62%) is invested in capital assets (land, buildings, streets, sidewalks, equipment, etc.).

The City uses these capital assets to provide services to citizens; consequently, these assets are not available for future spending. Although the City's investment in its capital assets is reported net of related debt, it should be noted that the resources needed to repay this debt must be provided from other sources, since the capital assets themselves cannot be used to liquidate these liabilities. Another portion of net assets (18%) is restricted for debt service, law enforcement, or community redevelopment and infrastructure/transportation projects. The remaining balance of unrestricted net assets, \$ 7,956,237, may be used to meet government's ongoing obligations to citizens and creditors.

CITY OF SOUTH MIAMI, FLORIDA  
MANAGEMENT'S DISCUSSION AND ANALYSIS  
September 30, 2012

Table 1  
City of South Miami  
Net Assets

	Governmental Activities	
	2012	2011
Current and other assets	\$ 30,844,753	\$ 28,660,034
Capital assets (net)	39,823,067	40,025,612
Total assets	70,667,820	68,685,646
Current and other liabilities	16,582,622	15,589,064
Long term liabilities	15,091,716	16,325,192
Total liabilities	31,674,338	31,914,256
Net assets:		
Invested in capital assets, net of related debt	24,317,650	23,767,194
Restricted	6,719,595	4,679,729
Unrestricted	7,956,237	8,324,467
Total net assets	\$ 38,993,482	\$ 36,771,390

At the end of the current fiscal year, the City of South Miami is able to report positive balances in all three categories of net assets. The restricted net assets increased in 2012 by \$ 2,039,866, and the unrestricted governmental activities net assets decreased by \$ 368,230. Capital assets decreased during the current year due to depreciation and retirements which were more than assets purchased during fiscal year 2012. The decrease in liabilities is mainly due to the retirement of certain bonds and notes payable.

The following information presented is to assist the reader in understanding the different types of normal impacts that can affect revenues:

- 1) Economic condition can reflect a declining, stable or growing environment and has a substantial impact on property, non-ad valorem assessments, sales, gas, or other tax revenues as well as consumer spending habits for building permits, user fees and consumption.
- 2) The City Commission has significant authority to set increases or decreases in City's rates (stormwater, permitting, user fees, etc.)
- 3) Changing patterns in intergovernmental and grant revenues (both recurring and non-recurring) can significantly change and impact the annual comparisons.
- 4) Market impacts on investment income may cause investment revenues to fluctuate from the prior year.

CITY OF SOUTH MIAMI, FLORIDA  
MANAGEMENT'S DISCUSSION AND ANALYSIS  
September 30, 2012

Some other basic impacts on expenses are reflected below:

- 1) Introduction of new programs can have a substantial impact on property, non-ad valorem assessments, sales, gas, or other tax revenues as well as consumer spending habits for building permits, user fees and consumption.
- 2) Changes in service demand levels can cause the City to increase or decrease authorized staffing.
- 3) Salary increases such as cost of living, performance increases, and market adjustments can impact personal service costs.
- 4) While inflation appears to be reasonably modest, the City is a major consumer of certain commodities such as chemicals, supplies, fuels, and parts. Some functional expenses may experience unusual commodity specific increases.

Statement of Activities:

As noted earlier, the statement of activities presents information showing how the City's net assets changed during the most recent fiscal year. The following table reflects the City's revenues and expenses for fiscal year 2012 compared to 2011 with the resulting change in net assets:

Table 2  
City of South Miami  
Changes in Net Assets

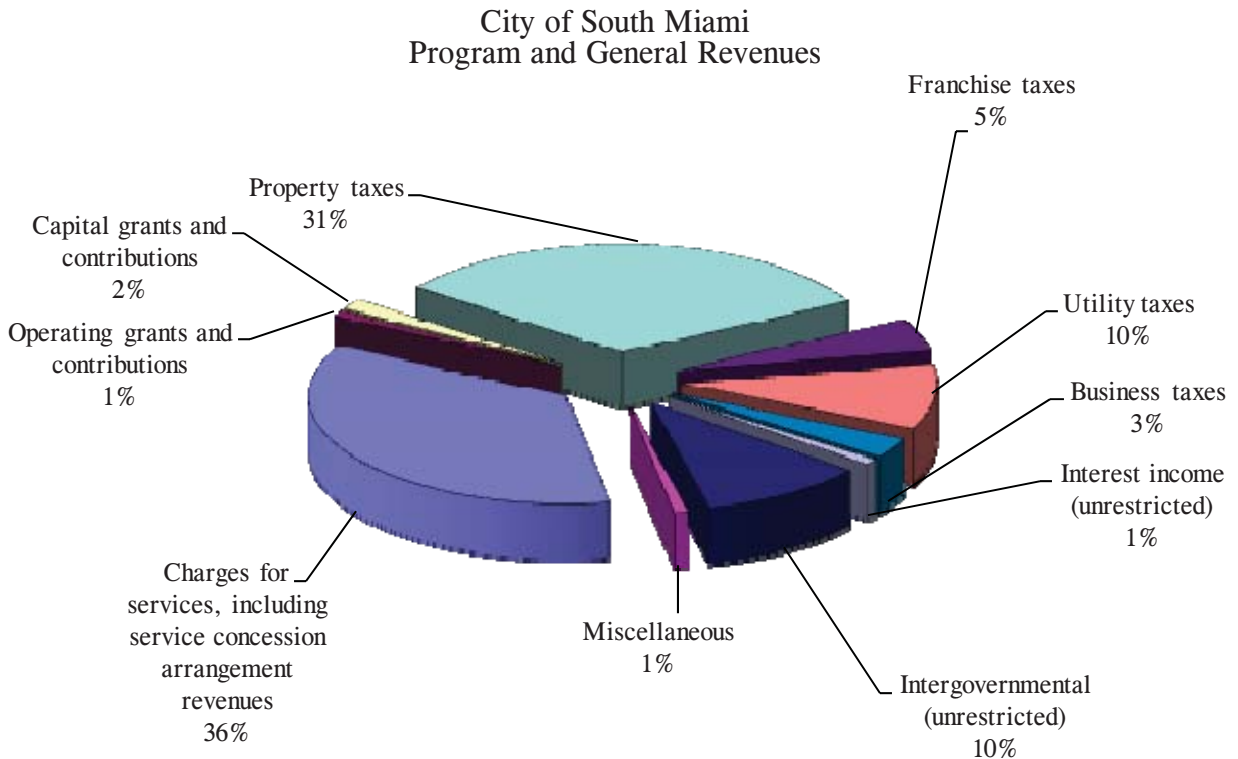
	Governmental Activities	
	2012	2011
Revenues:		
Program revenues:		
Charges for services	\$ 7,439,860	\$ 6,029,461
Operating grants and contributions	195,317	440,754
Capital grants and contributions	346,104	718,372
General revenues:		
Property taxes	6,707,607	7,114,626
Franchise taxes	1,047,915	1,066,317
Utility taxes	2,051,933	2,070,271
Business taxes	640,860	606,054
Service concession arrangement	370,828	358,533
Interest income (unrestricted)	181,073	139,719
Intergovernmental (unrestricted)	2,197,837	1,979,609
Miscellaneous	185,364	108,420
	\$ 21,364,698	\$ 20,632,136
Total revenues	\$ 21,364,698	\$ 20,632,136

**CITY OF SOUTH MIAMI, FLORIDA**  
**MANAGEMENT'S DISCUSSION AND ANALYSIS**  
 September 30, 2012

Table 2  
 City of South Miami  
 Changes in Net Assets  
 (continued)

	Governmental Activities	
	2012	2011
Expenses:		
General government	\$ 3,597,646	\$ 3,911,603
Public safety	7,482,532	7,541,944
Public works	4,746,847	4,337,360
Community services	1,284,573	1,097,846
Culture and recreation	1,084,421	1,140,113
Interest on long-term debt	946,587	929,256
<b>Total expenses</b>	<b>19,142,606</b>	<b>18,958,122</b>
Increase in net assets	2,222,092	1,674,014
Net assets, October 1	36,771,390	35,097,376
Net assets, September 30	<u>\$ 38,993,482</u>	<u>\$ 36,771,390</u>

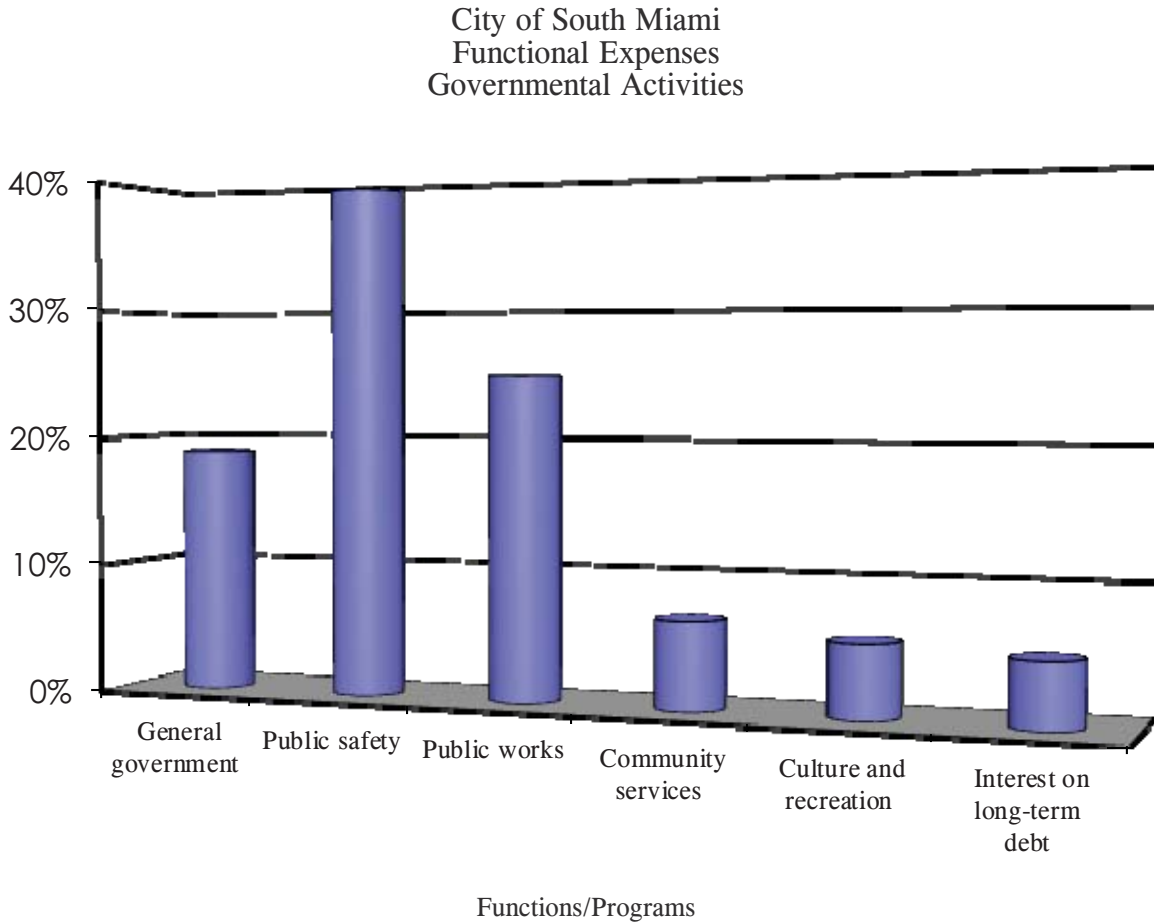
The City's total revenues increased by 3.6%, to \$ 21,364,698 (see Table 2), mainly due to an increase in charges for service. Approximately 31% of the City's revenues come from property taxes, another 20% comes from intergovernmental revenues and utility taxes, and 36% from charges for services (see chart that follows). The City's management took major actions in 2012 to improve City revenues and to control expenses. The actual numbers for most of the City's revenue sources were above the final budget estimates.



CITY OF SOUTH MIAMI, FLORIDA  
 MANAGEMENT'S DISCUSSION AND ANALYSIS  
 September 30, 2012

The City's expenses cover a range of services. The total cost of all programs and services increased by \$ 184,484 or 1% (see Table 2). As shown in Table 2, governmental expenses are largely weighted in three functions, namely the public safety, general government, and public works. At \$ 7,482,532, public safety expenses represent 39% of the statement of activities' total expenses for the City in fiscal year 2012. General Government category expenses total for 2012 was \$ 3,597,646, or 19% of total expenses. The General Government category includes all other City departments except public safety, culture and recreation and public works and community services. Lastly, public works expended \$ 4,746,847 or 25% of expenses. The City had no business-type activities for the current year.

The chart below presents the cost of each of the City's governmental services.



The cost of all governmental activities this year, including \$ 946,587 in interest expense on long-term debt, was \$ 19,142,606. Some of that cost was financed by:

- Those who directly benefited from the programs through charges for services (\$ 7,439,860), or
- Other governments and organizations that subsidized certain programs from grants and contributions (\$ 541,421).

**CITY OF SOUTH MIAMI, FLORIDA**  
**MANAGEMENT'S DISCUSSION AND ANALYSIS**  
September 30, 2012

The City financed the remaining \$ 11,161,325 "public benefit" portion of governmental activities from property taxes, utility taxes and with other revenues, such as interest and unrestricted intergovernmental revenue.

**GOVERNMENTAL FUNDS' FINANCIAL ANALYSIS**

As the City completed the year, its governmental funds reported combined fund balances of \$ 15,897,579, with the General Fund representing \$ 8,658,983. Of the total fund balances: \$ 203,854 is non-spendable, \$ 6,719,595 is restricted, \$ 1,697,989 is committed, \$ 1,132,139 is assigned and \$ 6,144,002 is unassigned fund balance.

The General Fund's fund balance decreased by \$ 839,691 after net transfers of \$ 1,759,132. There were \$ 1,294,319 in capital outlay expenditures for the General Fund and the Capital Improvements Program Fund, which were financed mostly through restricted funds. General Fund revenues were fairly consistent for the years ended 2012 and 2011. Please refer to the General Fund Budget Highlights section below for further information.

During the current year, the Capital Improvements Program Fund's balance increased by \$ 509,751. There was approximately \$ 866,831 in capital outlay expenditures, which were funded through transfers from the General Fund. During the current year, the Debt Service Fund's balance also increased by \$ 807,225. There were \$ 768,578 in principal and interest expenditures, which were primarily funded through rents and royalties. The Community Redevelopment Agency fund balance decreased by \$ 486,708. Total fund expenditures of \$ 1,590,574 were mostly financed with ad valorem taxes and accumulated fund balance.

**GENERAL FUND BUDGETARY HIGHLIGHTS**

Over the course of the year, the City amended the General Fund budget. The budget was amended during the fiscal year, in accordance with the City Charter, to account for rollovers related to capital improvement projects, to account for additional funding of unforeseen expenditures, personnel changes and for prior year encumbrances.

The base revenue budget was \$ 16,360,475. The difference between the final estimated revenues and the actual revenues in the General Fund was \$ 182,692 for fiscal year 2012.

Actual revenues, at \$ 16,177,783 came in lower than the final budget of \$ 16,360,475.

Comparing the original budget to the final budget of the fiscal year 2012; the original expenditure budget of \$ 16,112,452 was increased by \$ 33,897 for prior year encumbrances and capital improvements. Actual expenditures were \$ 15,277,913 and were below the final amended budget by \$ 868,436. All other expenditures were in line with the projected expectations. Please refer to pages 50 and 51 for further details.

CITY OF SOUTH MIAMI, FLORIDA  
MANAGEMENT'S DISCUSSION AND ANALYSIS  
September 30, 2012

**CAPITAL ASSETS AND DEBT ADMINISTRATION**

Capital assets:

The City of South Miami's investment in capital assets for its governmental activities as of September 30, 2012, is detailed below:

	Governmental Activities		Total Percentage Change
	2012	2011	
Land	\$ 14,689,068	\$ 14,649,084	0.3%
Construction in progress	47,225	47,225	-
Building and improvements	15,313,020	15,673,213	-2.3%
Machinery and equipment	2,535,684	2,249,998	12.7%
Land improvements	248,755	285,955	-13.0%
Infrastructure	6,685,027	6,902,865	-3.2%
Intangible assets	304,288	217,272	40.0%
	<u>\$ 39,823,067</u>	<u>\$ 40,025,612</u>	

For fiscal year 2012 the City spent \$ 1,140,324 on capital programs primarily in the acquisition of certain real estate properties, the purchase of vehicles, equipment, furniture, and street improvements. Additional information on the City's capital assets can be found in Note 7 on page 35 of this report.

Debt Administration:

At year-end, the City had approximately \$ 16.2 million in outstanding debt, as noted below:

	Governmental Activities		Total Percentage Change
	2012	2011	
Florida Municipal Loan			
Council Bonds	\$ 6,810,000	\$ 6,995,000	-2.6%
Taxable Revenue Note, Series 2011	7,575,000	7,575,000	-
CRA Bond Series 2006	876,750	1,113,092	-21.2%
Notes payable	840,440	1,134,781	-25.9%
Capital leases	141,145	227,658	-38.0%
	<u>\$ 16,243,335</u>	<u>\$ 17,045,531</u>	

The debt position of the City is summarized above and is fully explained in Note 8 to the financial statements.

**CITY OF SOUTH MIAMI, FLORIDA**  
**MANAGEMENT'S DISCUSSION AND ANALYSIS**  
September 30, 2012

**ECONOMIC FACTORS AND NEXT YEAR'S BUDGETS AND RATIOS**

The State of Florida, by constitution, does not have a state personal income tax and therefore, the State operates primarily using sales, gasoline and corporate income taxes. Local governments (cities, counties, and school boards) primarily rely on property and a limited array of permitted other taxes (sales, telecommunication, gasoline, utilities services, etc.) and fees (franchise, building permits, business license, etc.) for their governmental activities. There are a limited number of state-shared revenues and recurring and non-recurring (one-time) grants from both the state and federal governments. For certain governmental activities (building inspections, recreational programs, etc.) the user pays a related fee or charge associated with the service.

Estimated revenues and other financing sources, in fiscal year 2013, General Fund budget are \$ 16,370,144, a decrease of \$ 223,892 from actual revenues of \$ 16,594,036 for fiscal year 2012. With these revenues the City will be able to fund current services and any expected impact of inflation on fuel, salaries and benefits. Fiscal year 2013 expenditures and transfers are expected to be \$ 17,010,532 or \$ 326,513 lower than fiscal year 2012 total actual expenditures and transfers of \$ 17,337,045, if estimates are realized.

**REQUESTS FOR INFORMATION**

The City's financial statements are designed to present users (citizens, taxpayers, customers, investors and creditors) with a general overview of the City's finances and to demonstrate the City's accountability. If you have questions about the report or need additional financial information, please contact Alfredo Riverol, CPA, Chief Financial Officer, City of South Miami, 6130 Sunset Drive Miami, Florida 33143.



CITY OF SOUTH MIAMI, FLORIDA  
STATEMENT OF NET ASSETS  
September 30, 2012

	<u>Governmental Activities</u>
<b>ASSETS:</b>	
Cash and cash equivalents	\$ 17,033,811
Receivables	1,088,670
Prepaid expenses	203,854
Accrued interest receivable	50,945
Notes receivable	9,065,437
Guaranteed rent receivable	3,189,506
Net pension asset	59,052
Bond issuance costs, net	153,478
Capital assets:	
Capital assets, not being depreciated	14,736,293
Capital assets, net of accumulated depreciation	<u>25,086,774</u>
Total assets	<u>70,667,820</u>
 <b>LIABILITIES:</b>	
Accounts payable	1,312,055
Accrued liabilities	478,809
Other liabilities	263,044
Unearned revenue	374,848
Accrued interest payable	321,601
Deferred inflows from service concession arrangement	12,254,943
Due within one year:	
Compensated absences payable	291,183
Debt, including bonds, notes payable and capital leases	1,286,139
Due in more than one year:	
Compensated absences payable	788,834
Debt, including bonds, notes payable and capital leases	14,219,278
Net OPEB obligation	<u>83,604</u>
Total liabilities	<u>31,674,338</u>
 <b>NET ASSETS:</b>	
Invested in capital assets, net of related debt	24,317,650
Restricted for:	
Infrastructure and transportation projects	2,627,094
Community redevelopment	1,018,786
Law enforcement	1,987,468
Debt service	1,086,247
Unrestricted	<u>7,956,237</u>
Total net assets	<u>\$ 38,993,482</u>

The notes to the basic financial statements are an integral part of these financial statements.

**CITY OF SOUTH MIAMI, FLORIDA**  
**STATEMENT OF ACTIVITIES**  
For the Year Ended September 30, 2012

FUNCTIONS/PROGRAMS:	Program Revenues				Net Revenue (Expense) and Change in Net Assets
	Expenses	Charges for Services	Operating Grants and Contributions	Capital Grants and Contributions	Total Governmental Activities
Primary government:					
Governmental activities:					
General government	\$ 3,597,646	\$ 287,291	\$ 24,762	\$ -	\$ (3,285,593)
Public safety	7,482,532	5,917,499	84,837	-	(1,480,196)
Public works	4,746,847	524,590	-	9,038	(4,213,219)
Community services	1,284,573	31,149	40,543	337,066	(875,815)
Culture and recreation	1,084,421	233,624	45,175	-	(805,622)
Interest on long-term debt	946,587	445,707	-	-	(500,880)
	<u>\$ 19,142,606</u>	<u>\$ 7,439,860</u>	<u>\$ 195,317</u>	<u>\$ 346,104</u>	<u>(11,161,325)</u>
General revenues:					
Property taxes					6,707,607
Utility taxes					2,051,933
Business taxes					640,860
Franchise taxes					1,047,915
Service concession arrangement					370,828
Interest income (unrestricted)					181,073
Intergovernmental (unrestricted)					2,197,837
Other					185,364
					<u>13,383,417</u>
					2,222,092
					<u>36,771,390</u>
					<u>\$ 38,993,482</u>

The notes to the basic financial statements are an integral part of these financial statements.

**CITY OF SOUTH MIAMI, FLORIDA**  
**BALANCE SHEET - GOVERNMENTAL FUNDS**  
September 30, 2012

	Major Funds				Total Governmental Funds
	General Fund	Capital Improvements Program Fund	Community Redevelopment Agency Fund	Other Nonmajor Governmental Funds	
<b>ASSETS:</b>					
Cash and cash equivalents	\$ 10,567,906	\$ -	\$ 1,264,866	\$ 5,201,039	\$ 17,033,811
Receivables	462,891	-	-	625,779	1,088,670
Due from other funds	-	931,602	-	225,390	1,156,992
Prepaid expenditures	203,854	-	-	-	203,854
Total assets	\$ 11,234,651	\$ 931,602	\$ 1,264,866	\$ 6,052,208	\$ 19,483,327
 <b>LIABILITIES AND FUND BALANCES:</b>					
Liabilities:					
Accounts payable	\$ 707,888	\$ 421,851	\$ 81,071	\$ 101,245	\$ 1,312,055
Accrued liabilities	478,809	-	-	-	478,809
Due to other funds	781,917	-	159,930	215,145	1,156,992
Deferred revenue	349,089	-	-	25,759	374,848
Other liabilities	257,965	-	5,079	-	263,044
Total liabilities	2,575,668	421,851	246,080	342,149	3,585,748
 Fund balances:					
Nonspendable:					
Prepaid expenditures	203,854	-	-	-	203,854
Restricted for:					
Debt service	-	-	-	1,086,247	1,086,247
Community services	-	-	1,018,786	-	1,018,786
Grant projects	-	-	-	601,125	601,125
Stormwater management	-	-	-	425,299	425,299
Transportation projects	-	-	-	1,600,670	1,600,670
Law enforcement	-	-	-	1,987,468	1,987,468
Committed to:					
Emergency and disaster recovery operating reserve	1,688,739	-	-	-	1,688,739
Parking management	-	-	-	9,250	9,250
Assigned to:					
Capital projects	-	509,751	-	-	509,751
Subsequent year's budget	622,388	-	-	-	622,388
Unassigned	6,144,002	-	-	-	6,144,002
Total fund balances	8,658,983	509,751	1,018,786	5,710,059	15,897,579
Total liabilities and fund balances	\$ 11,234,651	\$ 931,602	\$ 1,264,866	\$ 6,052,208	\$ 19,483,327

The notes to the basic financial statements are an integral part of these financial statements.

CITY OF SOUTH MIAMI, FLORIDA  
RECONCILIATION OF THE BALANCE SHEET OF GOVERNMENTAL FUNDS  
TO THE STATEMENT OF NET ASSETS  
September 30, 2012

FUND BALANCES - TOTAL GOVERNMENTAL FUNDS, PAGE 16 \$ 15,897,579

Amounts reported for governmental activities in the statement of net assets are different because:

Certain assets used in governmental activities are not financial resources and, therefore, are not reported in the funds:

Notes receivable	9,065,437
Guaranteed rent receivable	3,189,506
Accrued interest receivable	50,945
Net pension asset	59,052
Bond issuance costs, net	153,478

Capital assets used in governmental activities are not financial resources and therefore are not reported in the governmental funds:

Governmental capital assets	49,719,384
Less accumulated depreciation	(9,896,317)

Receivables and related liabilities in governmental funds are susceptible to full accrual on the government-wide statements:

Deferred inflows from service concession arrangement	(12,254,943)
--	--------------

Certain long-term liabilities are not due and payable in the current period and therefore are not reported in the governmental funds:

Bonds payable	(7,686,750)
Notes payable	(7,677,522)
Capital leases payable	(141,145)
Accrued interest payable	(321,601)
OPEB Liability	(83,604)
Compensated absences payable *	<u>(1,080,017)</u>

NET ASSETS OF GOVERNMENTAL ACTIVITIES, PAGE 14 \$ 38,993,482

\* Not created in connection with terminated employees

The notes to the basic financial statements are an integral part of these financial statements.

**CITY OF SOUTH MIAMI, FLORIDA**  
**STATEMENT OF REVENUES, EXPENDITURES, AND CHANGES IN FUND BALANCES -**  
**GOVERNMENTAL FUNDS**  
For the Year Ended September 30, 2012

	Major Funds			Other Nonmajor Governmental Funds	Total Governmental Funds
	General Fund	Capital Improvements Program Fund	Community Redevelopment Agency Fund		
<b>REVENUES:</b>					
Taxes:					
Ad valorem	\$ 5,625,840	\$ -	\$ 1,081,767	\$ -	\$ 6,707,607
Utility taxes	2,020,473	-	-	31,460	2,051,933
Business taxes	640,860	-	-	-	640,860
Franchise fees	1,047,915	-	-	-	1,047,915
Licenses and permits	667,219	-	-	-	667,219
Intergovernmental	1,320,645	-	-	1,293,233	2,613,878
Charges for services	4,065,036	-	-	24,000	4,089,036
Fines and forfeitures	187,560	-	-	1,756,708	1,944,268
Interest income	129,365	-	15,659	36,049	181,073
Rents and royalties	244,459	-	31,149	750,054	1,025,662
Other	247,982	-	291	191,074	439,347
	<u>16,197,354</u>	<u>-</u>	<u>1,128,866</u>	<u>4,082,578</u>	<u>21,408,798</u>
Total revenues					
<b>EXPENDITURES</b>					
Current:					
General government	2,754,946	-	-	82,806	2,837,752
Public safety	7,014,325	-	-	56,925	7,071,250
Public works	3,704,704	-	-	117,056	3,821,760
Culture and recreation	1,034,205	-	-	-	1,034,205
Community services	-	-	1,231,886	-	1,231,886
Capital outlay	427,488	866,831	60,914	886,080	2,241,313
Debt service:					
Principal	317,581	-	236,342	248,273	802,196
Interest and fiscal charges	24,664	-	61,432	573,414	659,510
	<u>15,277,913</u>	<u>866,831</u>	<u>1,590,574</u>	<u>1,964,554</u>	<u>19,699,872</u>
Total expenditures					
Excess (deficiency) of revenues over expenditures	<u>919,441</u>	<u>(866,831)</u>	<u>(461,708)</u>	<u>2,118,024</u>	<u>1,708,926</u>
<b>OTHER FINANCING SOURCES (USES):</b>					
Transfers in	300,000	1,376,582	-	682,550	2,359,132
Transfers out	(2,059,132)	-	(25,000)	(275,000)	(2,359,132)
	<u>(1,759,132)</u>	<u>1,376,582</u>	<u>(25,000)</u>	<u>407,550</u>	<u>-</u>
Total other financing sources (uses)					
Net change in fund balances	(839,691)	509,751	(486,708)	2,525,574	1,708,926
FUND BALANCES, beginning	<u>9,498,674</u>	<u>-</u>	<u>1,505,494</u>	<u>3,184,485</u>	<u>14,188,653</u>
FUND BALANCES, ending	<u>\$ 8,658,983</u>	<u>\$ 509,751</u>	<u>\$ 1,018,786</u>	<u>\$ 5,710,059</u>	<u>\$ 15,897,579</u>

The notes to the basic financial statements are an integral part of these financial statements.

**CITY OF SOUTH MIAMI, FLORIDA**  
**RECONCILIATION OF THE STATEMENT OF REVENUES, EXPENDITURES**  
**AND CHANGES IN FUND BALANCES OF GOVERNMENTAL FUNDS**  
**TO THE STATEMENT OF ACTIVITIES**  
For the Year Ended September 30, 2012

NET CHANGE IN FUND BALANCES -  
TOTAL GOVERNMENTAL FUNDS, PAGE 18 \$ 1,708,926

Amounts reported for governmental activities in the statement of activities are different because:

Governmental funds report capital outlays as expenditures; however, in the statement of activities the cost of those assets is depreciated over their estimated useful lives:

Expenditures for capital assets	1,140,324
Less current year provision for depreciation	(1,316,642)

In the statement of activities, only the loss on the disposal of capital assets is reported, whereas in the governmental funds, only the proceeds from the disposal are reported:

Cost of assets disposed	(478,114)
Related accumulated depreciation	451,887

Principal payments received on notes receivable and payments on guaranteed rent receivable are reported as revenue in the governmental funds because they provide current financial resources, but are reported as a reduction of assets in the statement of net assets

(370,828)

Certain revenues do not provide current financial resources and therefore are not reported in the governmental funds:

Net revenues from service concession arrangement	370,828
Change in accrued interest on notes receivable	(17,873)

Principal payments on long-term debt are reported as an expenditure in governmental funds, but as a reduction of long-term liabilities/debt in the statement of net assets.

802,196

Some expenses reported in the statement of activities do not require the use of current financial resources and, therefore are not reported as expenditures in governmental funds:

Change in bond issuance costs, net	(10,232)
Change in deferred loss on refunding	(49,195)
Change in net OPEB obligation	(29,604)
Change in net pension obligation (asset)	(631)
Change in compensated absences payable	248,700
Change in accrued interest payable	(227,650)

CHANGE IN NET ASSETS OF GOVERNMENTAL ACTIVITIES, PAGE 15 \$ 2,222,092

The notes to the basic financial statements are an integral part of these financial statements.

CITY OF SOUTH MIAMI, FLORIDA  
STATEMENT OF FIDUCIARY NET ASSETS  
FIDUCIARY FUNDS  
September 30, 2012

	<u>Employee Retirement Funds</u>
<b>ASSETS:</b>	
Cash and cash equivalents	\$ 567,978
Investments, at fair value:	
U.S. Government securities	2,198,391
Corporate obligations	1,978,111
Common stocks	7,087,863
International equity	306,060
Mutual funds	<u>13,657,184</u>
Total cash, cash equivalents and investments	<u>25,795,587</u>
Receivables:	
Employer contribution	206,653
Employee contribution	24,051
Dividends and interest	32,984
Section 185 contribution	<u>160,397</u>
Total receivables	<u>424,085</u>
Other assets:	
Prepaid expenses	<u>2,134</u>
Total assets	<u>26,221,806</u>
<b>LIABILITIES:</b>	
Accounts payable	347,029
Minimum funding liability	75,560
Reserve for future benefits	<u>52,579</u>
Total payables	<u>475,168</u>
<b>NET ASSETS:</b>	
Held in trust for employees' pension benefits	\$ <u><u>25,746,638</u></u>

The notes to the basic financial statements are an integral part of these financial statements.

CITY OF SOUTH MIAMI, FLORIDA  
STATEMENT OF CHANGES IN FIDUCIARY NET ASSETS  
FIDUCIARY FUNDS  
For the Year Ended September 30, 2012

	<u>Employee Retirement Funds</u>
ADDITIONS:	
Contributions:	
Employer	\$ 984,195
Employees	800,849
Section 185 contributions	<u>122,617</u>
Total contributions	<u>1,907,661</u>
Investment income:	
Net appreciation in fair value of investments	3,436,380
Interest and dividends	<u>438,108</u>
Total investment income	3,874,488
Less investment expenses	<u>150,138</u>
Net investment income	<u>3,724,350</u>
Total additions	<u>5,632,011</u>
DEDUCTIONS:	
Benefits paid	1,134,851
Refunds of contributions	477,742
Administrative expenses	165,070
Minimum benefit funding payment	<u>37,780</u>
Total deductions	<u>1,815,443</u>
Changes in net assets	3,816,568
NET ASSETS, beginning of year	<u>21,930,070</u>
NET ASSETS, end of year	<u>\$ 25,746,638</u>

The notes to the basic financial statements are an integral part of these financial statements.



CITY OF SOUTH MIAMI, FLORIDA  
NOTES TO THE BASIC FINANCIAL STATEMENTS  
September 30, 2012

NOTE 1 - GENERAL DESCRIPTION OF THE CITY

The City of South Miami, Florida (the "City") is a political subdivision of the State of Florida, located in Miami-Dade County. The City was incorporated in 1927 and has operated since 1978 under the same charter. It is located approximately 3 miles south of the City of Miami and borders the University of Miami's main campus and the City of Coral Gables and The Village of Pinecrest. The City is approximately 2.5 square miles in area and has a population of approximately 13,000 residents. The City is a full service city providing its citizens with a full complement of municipal services, specifically public safety, general government, parks, culture and recreation, sanitation, public works, and community services. It also maintains various trust funds in a fiduciary capacity, but does not provide any educational facilities, water, wastewater or fire services. Those services are provided by the Miami-Dade County Public School System and Miami-Dade County, Florida.

NOTE 2 - SUMMARY OF SIGNIFICANT ACCOUNTING POLICIES

Financial Reporting Entity:

The financial statements of the City have been prepared in conformity with accounting principles generally accepted in the United States of America (GAAP) as applied to governmental units. The Governmental Accounting Standards Board (GASB) is the accepted standard-setting body for establishing governmental accounting and financial reporting principles. As defined by GASB, the financial reporting entity is required to include (a) the primary government, (b) organizations for which the primary government is financially accountable, and (c) other organizations for which the nature and significance of their relationship with the primary government are such that exclusion would cause the reporting entity's financial statements to be misleading or incomplete. Blended component units, although legally separate entities are, in substance, part of the government's operations and so data from these units are combined with data of the primary government. Discretely presented component units, on the other hand, are reported; in a separate column in the statement of net assets to emphasize they are legally separate from the government.

*Blended Component Unit:*

The South Miami Community Redevelopment Agency (the "CRA") is deemed to be a separate, distinct and independent legal entity controlled by a board of seven members, which include five members of the City's elected Commission and is determined to be a component unit of the City. The CRA falls under the requirements of Chapter 163 Part III of the Florida Statutes. Consequently, this component unit is reported in the primary government using the blended method.

Individual financial statements for the CRA are available through the Finance Department of the City at 6130 Sunset Drive, South Miami, Florida 33143.

*Discretely Presented Component Units:*

There are no discretely presented component units for the City.

CITY OF SOUTH MIAMI, FLORIDA  
NOTES TO THE BASIC FINANCIAL STATEMENTS  
September 30, 2012

NOTE 2 - SUMMARY OF SIGNIFICANT ACCOUNTING POLICIES (continued)

Government wide and Fund Financial Statements:

The government-wide financial statements (i.e., the statement of net assets and the statement of activities) report information on all of the non-fiduciary activities of the primary government and its component units. The effect of the interfund activity has been removed from these statements. Governmental activities, which normally are supported by taxes and intergovernmental revenues, are reported separately from business-type activities, which rely to a significant extent on fees and charges for support. The City has no business-type activities.

The statement of activities demonstrates the degree to which the direct expenses of a given function or segment are offset by program revenues. Direct expenses are those that are clearly identifiable with a specific function or segment. Program revenues include 1) charges to customers or applicants who purchase, use, or directly benefit from goods, services, or privileges provided by a given function or segment and 2) grants and contributions that are restricted to meeting the operational or capital requirements of a particular function or segment. Taxes and other items not properly included among program revenues are reported instead as general revenues.

Separate financial statements are provided for governmental funds and fiduciary funds, even though the latter are excluded from the government-wide financial statements. Major individual governmental funds are reported as separate columns in the fund financial statements.

Measurement Focus, Basis of Accounting, and Financial Statement Presentation:

The government-wide financial statements are reported using the economic resources measurement focus and the accrual basis of accounting, as are the fiduciary fund financial statements. Revenues are recorded when earned and expenses are recorded when a liability is incurred, regardless of the timing of related cash flows. Property taxes are recognized as revenues in the year for which they are levied. Grants and similar items are recognized as revenue as soon as all eligibility requirements imposed by the provider have been met.

Governmental fund financial statements are reported using the current financial resources measurement focus and the modified accrual basis of accounting. Revenues are recognized as soon as they are both measurable, and available. Revenues are considered to be available when they are collectible within the current period or soon enough thereafter to pay liabilities of the current period. Property taxes and charges for services are considered available when collected in the current year or within sixty days subsequent to year end; provided that amounts received pertain to billings through the fiscal year just ended. Intergovernmental revenues, franchise fees and utility service taxes are recorded in accordance with their legal or contractual requirements if collected in the current period or within sixty days after year end. Revenues derived from rents and royalties and investment income are recorded when earned. Permits, fines and forfeitures, and other revenue are recorded as revenue when received in cash because they are generally not measurable until actually received. Business license revenue collected in advance of periods to which they relate is recorded as deferred revenue.

Expenditures generally are recorded when a liability is incurred, as under accrual accounting. However, debt service expenditures, as well as expenditures related to compensated absences, pension, other post-employment benefits and claims and judgments, are recorded when due.

CITY OF SOUTH MIAMI, FLORIDA  
NOTES TO THE BASIC FINANCIAL STATEMENTS  
September 30, 2012

NOTE 2 - SUMMARY OF SIGNIFICANT ACCOUNTING POLICIES (continued)

The City reports the following major governmental funds:

The General Fund is the City's primary operating fund. It accounts for all financial resources of the general government, except those required to be accounted for in another fund.

The Capital Improvements Program Fund is used to account for multi-year expenditures of major capital projects and expenditures for all general government programs. Revenue within this fund is primarily received as a transfer of funds from the general fund based upon the long-term capital budget needs of the various City departments and the recreation programs. Revenues may also include transfers from other financial sources and investment interest.

The Community Redevelopment Agency ("CRA") Fund, which is the City's sole blended component unit, accounts for the revenues and expenditures dedicated to the redevelopment and recreational programs within certain areas of the City. The CRA's primary source of revenue is tax-increment funds from Miami Dade County and the City.

Additionally, the government reports the following fiduciary fund type:

The fiduciary funds account for the activities of the *General Employees and Police Officers Pension Plan* and the *Police Officers Retirement Trust Fund – Section 185 Plan* that accumulate resources for pension benefit payments to qualified general and public safety employees.

As a general rule, the effect of interfund activity has been eliminated from the government-wide financial statements.

Amounts reported as program revenues include 1) charges to customers or applicants for goods, services, or privileges provided, 2) operating grants and contributions, and 3) capital grants and contributions, including special assessments. Internally dedicated resources are reported as general revenues rather than as program revenues. Likewise, general revenues include all taxes, whose purpose has not been restricted to a specific program.

The City uses restricted amounts to be spent first when both restricted and unrestricted fund balance is available unless there are legal documents/contracts that prohibit doing this, such as in grant agreements requiring dollar for dollar spending. Additionally, the City would first use committed fund balance, followed by assigned fund balance and then unassigned fund balance when expenditures are incurred for purposes for which amounts in any of the unrestricted fund balance classifications could be used.

Cash, Cash Equivalents and Investments:

The City's cash and cash equivalents are considered to be cash on hand, demand deposits, and short-term investments with original maturities of three months or less from the date of purchase.

Investments for the government, as well as its component unit and fiduciary funds, are carried at fair value. Unrealized gains and losses in fair value are recognized.

CITY OF SOUTH MIAMI, FLORIDA  
NOTES TO THE BASIC FINANCIAL STATEMENTS  
September 30, 2012

NOTE 2 - SUMMARY OF SIGNIFICANT ACCOUNTING POLICIES (continued)

Receivables:

Receivables consist of amounts due for charges for services, fees, property taxes, intergovernmental revenues and grants. If the ultimate collectability of receivables became uncertain, the City would provide an allowance for that amount. As of September 30, 2012, there were no receivables deemed uncollectible by management.

Prepaid Expenses/Expenditures:

Certain payments to vendors reflect costs applicable to future accounting periods and are recorded as prepaid items in both government-wide and fund financial statements.

Ad Valorem Taxes:

Property values are assessed as of January 1 of each year, at which time taxes become an enforceable lien on property. Tax bills are mailed for the City by Miami-Dade County on or about October 1 of each year and are payable with discounts of up to 4% offered for early payment. Taxes become delinquent on April 1 of the year following the year of assessment and State law provides for enforcement of collection of property taxes by seizure of the personal property or by the sale of interest-bearing tax certificates to satisfy unpaid property taxes.

Assessed values are established by the Miami-Dade County Property Appraiser. In November 1992, a Florida constitutional amendment was approved by the voters which provides for limiting the increases in homestead property valuations for ad valorem tax purposes to a maximum of 3% annually and also provides for reassessment of market values upon changes in ownership. The County bills and collects all property taxes and remits them to the City. Procedures for the collection of delinquent taxes by Miami-Dade County are provided for in the Laws of Florida. There were no material delinquent property taxes in the fiscal year ended September 30, 2012.

State statutes permit municipalities to levy property taxes at a rate of up to 10 mills (\$ 10 per \$ 1,000 of assessed taxable valuation). The tax levy of the City is established by the City Commission and the Miami-Dade County Property Appraiser, who incorporates the City's millage into the total tax levy, which includes the County and the County School Board tax requirements. The millage rate assessed by the City for the year ended September 30, 2012 was 4.6662 mills (\$ 4.6662 per \$ 1,000 of taxable assessed valuation).

Capital Assets:

Capital assets, which include land, construction in progress, buildings and improvements, machinery and equipment, land improvements, infrastructure assets (e.g., roads, sidewalks, culverts, pump stations, stormwater lines, catch basins, and similar items), and intangibles, are reported in the governmental activities columns in the government-wide financial statements. Capital assets are defined by the City, as assets with an initial, individual cost of more than \$ 5,000 and an estimated useful life in excess of one year. Such assets are recorded at historical cost or estimated historical cost if purchased or constructed. Donated capital assets are recorded at estimated fair market value at the date of donation.

The costs of normal maintenance and repairs that do not add to the value of the asset or materially extend assets' lives are not capitalized.

CITY OF SOUTH MIAMI, FLORIDA  
NOTES TO THE BASIC FINANCIAL STATEMENTS  
September 30, 2012

NOTE 2 - SUMMARY OF SIGNIFICANT ACCOUNTING POLICIES (continued)

Capital assets are depreciated/amortized using the straight-line method over the following estimated useful lives:

Buildings and improvements	50 years
Machinery and equipment	5-15 years
Land improvements	20 years
Infrastructure	40-50 years
Intangibles	5 years

Unearned Revenue/Deferred Revenue:

Governmental funds report deferred revenue in connection with receivables for revenue that are not considered to be available to liquidate liabilities of the current period. Governmental funds also defer revenue recognition in connection with resources that have been received, but not yet earned. This is classified as unearned revenue. Unearned revenues at the government-wide level arise only when the City receives resources before it has a legal claim to them.

Compensated Absences:

City employees are granted annual leave (vacation) and sick leave in varying amounts based on length of service and the department in which the employee serves.

*Annual leave:*

Effective October 1995, the City's annual leave policy requires that earned vacation must be taken within one year of the employee's anniversary date, as there is no carryover from one period to another. Unused accrued vacation pay, if any, is paid at employee's termination or retirement.

*Sick leave:*

Effective October 1995, employees may accumulate sick leave without a maximum cap, but will not be paid upon termination or retirement. Employees hired on or before October 1995, may accumulate unused sick leave to a maximum of 600 hours. Upon termination or retirement sick leave is paid to those employees, hired on or before October 1995, on a pro rata formula based upon years of service.

The City reports the liability for compensated absences in the governmental activities of the government-wide financial statements when earned. The current portion is the amount estimated to be due in the following fiscal year. Expenditures for compensated absences are recorded in the governmental funds only for employees who had terminated their employment as of the end of the fiscal year. The General Fund has typically been used to liquidate such amounts.

Long-Term Obligations:

In the government-wide financial statements, long-term obligations are reported as liabilities in the statement of net assets. Bond premiums and discounts, as well as debt issuance costs, are deferred and amortized over the life of the bonds using the straight-line method. Long-term debt is reported net of the applicable premium or discount.

CITY OF SOUTH MIAMI, FLORIDA  
NOTES TO THE BASIC FINANCIAL STATEMENTS  
September 30, 2012

NOTE 2 - SUMMARY OF SIGNIFICANT ACCOUNTING POLICIES (continued)

For bond refundings resulting in the defeasance of debt reported in the government-wide financial statements, the difference between the reacquisition price and the net carrying amount of the old debt is deferred and amortized as a component of interest expense. The accounting gain or loss is amortized over the remaining life of the old debt or the life of the new debt, whichever is shorter, and is presented as an addition to or reduction of the face amount of the new debt.

In the fund financial statements, governmental fund types recognize debt premiums and discounts, as well as debt issuance costs, during the current period. The face amount of debt issued is reported as other financing sources. Premiums received on debt issuance are reported as other financing sources while discounts on debt issuances are reported as other financing uses. Issuance costs, whether or not withheld from the actual debt proceeds received, are reported as debt service expenditures

Equity Classifications:

*Government-wide financial statements:*

Net assets in the government-wide financial statements are displayed in three categories: 1) invested in capital assets, net of related debt, 2) restricted, or 3) unrestricted. Net assets invested in capital assets, net of related debt consist of capital assets reduced by accumulated depreciation and by any outstanding debt incurred to acquire, construct, or improve those assets, excluding unexpended proceeds. Net assets are reported as restricted when constraints are placed on their use either by external groups such as creditors, grantors, contributors, or laws and regulations of other governments; or law through constitutional provisions or enabling legislation. All other net assets that do not meet the definition of "restricted" or "invested in capital assets, net of related debt," are reported as unrestricted.

*Fund financial statements:*

The City presents fund balance in accordance with GASB Statement No. 54, *Fund Balance Reporting and Governmental Fund Type Definitions*. This statement requires that governmental fund financial statements present fund balances based on classifications that comprise a hierarchy that is based primarily on the extent to which the City is bound to honor constraints on the specific purposes for which amounts in the respective governmental funds can be spent.

The classifications used in the governmental fund financial statements are as follows:

Nonspendable: This classification includes amounts that cannot be spent because they are either (a) not in spendable form or (b) are legally or contractually required to be maintained intact. "Not in spendable form" includes items that are not expected to be converted into cash (such as inventories and prepaid amounts) and items such as long-term amount of loans and notes receivable, as well as property acquired for resale. The corpus (or principal) of a permanent fund is an example of an amount that is legally or contractually required to be maintained intact. In fiscal year 2012, this represents \$ 203,854.

Restricted: This classification includes amounts for which constraints have been placed on the use of the resources either (a) externally imposed by creditors (such as through a debt covenant), grantors, contributors, or laws or regulations of other governments, or (b) imposed by law through constitutional provisions or enabling legislation. In fiscal year 2012, this represents \$ 6,719,595.

CITY OF SOUTH MIAMI, FLORIDA  
NOTES TO THE BASIC FINANCIAL STATEMENTS  
September 30, 2012

NOTE 2 - SUMMARY OF SIGNIFICANT ACCOUNTING POLICIES (continued)

Committed: This classification includes amounts that can be used only for the specific purposes determined by a formal action of the government's highest level of decision making. The City Commission is the highest level of decision-making authority for the government that can, by adoption of an ordinance prior to the end of the fiscal year, commit fund balance. Once adopted, the limitation imposed by the ordinance remains in place until a similar action is taken (the adoption of another ordinance) to remove or revise the limitation. Resources accumulated pursuant to stabilization arrangements are reported in this category. In fiscal year 2012, this represents \$ 1,697,989.

Assigned: This classification includes amounts that are constrained by the City's intent to be used for a specific purpose but are neither restricted nor committed. The City Commission has by resolution authorized the City Finance Director to assign fund balance. The City Commission may also assign fund balance as it does when appropriating fund balance to cover a gap between estimated revenue and appropriations in the subsequent year's budget. Unlike commitments, assignments generally can only exist temporarily. In other words, an additional action does not normally have to be taken for the removal of an assignment. Conversely, as discussed above, an additional action is essential to either remove or revise a commitment. In fiscal year 2012, this represents \$ 1,132,139. In the General Fund, assigned fund balance for subsequent year's budget amounted to \$ 622,388. In the Capital Improvements Fund, assigned fund balance for capital projects amounted to \$ 509,751.

Unassigned: This classification includes the residual fund balance for the General Fund. This classification represents fund balance that has not been assigned to other funds and that has not been restricted, committed, or assigned to specific purposes within the General Fund. Unassigned fund balance may also include negative balances for any governmental fund if expenditures exceed amounts restricted, committed or assigned for those specific purposes. In fiscal year 2012, this represents \$ 6,144,002.

Minimum Fund Balance Policy and Emergency and Disaster Recovery Reserve:

The City's policy is to maintain an adequate General Fund balance to meet seasonal shortfalls in cash flow and reduce susceptibility to emergency and unanticipated expenditures and/or revenue shortfalls. The City's Commission had previously adopted an ordinance (No. 23-08-1958) to maintain an Emergency and Disaster Recovery Operating Reserve at a minimum level of approximately \$ 1,688,700 (10% of budgeted expenditures) and a Minimum Fund Balance, ranging from 20% to 50%, of the annual General Fund expenditures.

Use of Estimates:

The preparation of financial statements in conformity with accounting principles generally accepted in the United States of America requires management to make estimates and assumptions that affect the reported amounts of assets and liabilities and disclosure of contingent assets and liabilities at the date of the financial statements and the reported amounts of revenues and expenditures/expenses during the reporting period. Some of these estimates include assessing the collectability of receivables, the realization of pension and other-post-employment obligations/assets and the useful lives of capital assets. Although those estimates are based on management's knowledge of current events and actions it may undertake in the future, they could ultimately differ from actual results.

CITY OF SOUTH MIAMI, FLORIDA  
NOTES TO THE BASIC FINANCIAL STATEMENTS  
September 30, 2012

NOTE 2 - SUMMARY OF SIGNIFICANT ACCOUNTING POLICIES (continued)

Internal Balances:

Activity between funds that is representative of lending/borrowing arrangements outstanding at the end of the fiscal year is referred to as "due to/from other funds" (i.e., the current portion of inter-fund loans). These amounts reported in the fund financial statements as due/to other funds are eliminated in the government-wide governmental columns of the statement of net assets.

Date of Management's Review:

Subsequent events were evaluated by management through March 28, 2013, which is the date the financial statements were available to be issued.

NOTE 3 - DEPOSITS AND INVESTMENTS

The City, for accounting and investment purposes, maintains various accounts for use by all City funds.

Deposits - City:

Florida Statutes authorize the deposit of City funds in demand deposits or time deposits of financial institutions approved by the State Treasurer. These are defined as public deposits. All City public deposits are held in qualified public depositories pursuant to Chapter 280, Florida Statutes, "Florida Security for Public Deposits Act." Under the act, all qualified public depositories are required to pledge eligible collateral having a market value equal to or greater than the average daily or monthly balance of all public deposits times the depository's collateral pledging level. The collateral pledging level may range from 50% to 125% depending upon the depository's financial condition and the length of time that the depository has been established. All collateral must be deposited with the State Treasurer. Any losses to public depositors resulting from insolvency are covered by applicable deposit insurance, sale of securities pledged as collateral and, if necessary, assessment against other qualified public depositories of the same type as the depository in default. The City's bank balances were insured either by the Federal Depository Insurance Corporation or collateralized in the bank's participation in the Florida Security for Public Deposits Act.

As of September 30, 2012, the carrying amount of the City's book balance for deposits held with financial institutions totaled \$ 8,426,745 and the bank balance was \$ 8,852,775.

Investments - City:

The City previously adopted a comprehensive investment policy established in accordance with Section 218.415, Florida Statutes. The investment policy applies to all investments held or controlled by the City with the exception of the City-sponsored employee pension plans and its debt issuances where there are other existing policies or indentures in effect for the investment of related funds.



CITY OF SOUTH MIAMI, FLORIDA  
 NOTES TO THE BASIC FINANCIAL STATEMENTS  
 September 30, 2012

NOTE 3 - DEPOSITS AND INVESTMENTS (continued)

Allowable investments include United States government securities, United States government agencies and sponsored agencies repurchase agreements, commercial paper, state and local government taxable and/or tax-exempt debt, money market mutual funds, intergovernmental investment pools, corporate obligations, certificates of deposit, and other investments authorized by City Commission from time to time. The City manages its risk by establishing strict guidelines related to interest rates, credit worthiness, concentration and custodial credit. In addition, the City is not directly exposed to foreign credit risk.

As of September 30, 2012, the City had the following investments:

<u>Investment Type</u>	<u>Fair Value</u>	<u>Maturity Less than 1 Year</u>
Repurchase agreement	\$ <u>8,607,066</u>	\$ 8,607,066
Total fair value	\$ <u><u>8,607,066</u></u>	

A reconciliation of deposits and investments as shown by category is as follows:

By Category:	
Deposits	\$ 8,426,745
Investments	<u>8,607,066</u>
	<u>\$ 17,033,811</u>

Investments - Pension Plan:

The General Employees and Police Officers Pension Plan (the “Plan”) and the Police Officers Retirement Trust Fund-Section 185 Plan (the “Fund”) investments are held separately from those of other City funds and are shown in a separate fiduciary fund. As prescribed by the Plan and Fund investment policies, they are authorized to invest among several institutionally acceptable asset classes including bonds, debentures and other corporate obligations, equity securities and domestic real estate. The City’s Plan and Fund investment policies are determined by their respective Board of Trustees.

The Plan and Fund have investments in a combination of stocks, bonds, government securities and other investment securities. Investment securities are exposed to various risk, such as interest rate, market and credit risk. Due to the level of risk associated with certain investment securities and the level of uncertainty related to changes in the value of investment securities, it is at least reasonably possible that changes in risks in the near term would materially affect balances and the amounts reported in the statement of fiduciary net assets and the statement of changes in fiduciary net assets. The Plan and Fund, through its investment advisors, monitors the Plan and Fund’s investments and the risks associated with them on a regular basis, which is believed to minimize these risks.

CITY OF SOUTH MIAMI, FLORIDA  
 NOTES TO THE BASIC FINANCIAL STATEMENTS  
 September 30, 2012

NOTE 3 - DEPOSITS AND INVESTMENTS (continued)

*Credit Risk:*

Credit risk is the risk that a security or a portfolio will lose some or all of its value due to a real or perceived change in the ability of the issuer to repay its debt. The Plan and Fund have an investment policy that targets investments of the safest types of securities. This policy requires a diversified portfolio to minimize the potential loss on individual securities. The Plan and Fund's investment policy utilizes portfolio diversification in order to control the risk. The Plan and Fund fixed income investments had the following ratings at September 30, 2012 from a nationally recognized rating agency:

Moody's Credit Rating	General Employees and Police Officers Pension Plan	Police Officers Retirement Trust Fund Section 185	Total
AAA	\$ 991,166	\$ 267,000	\$ 1,258,166
AA	137,655	3,423	141,078
A	743,910	24,219	768,129
BAA	720,757	110,743	831,500
BA	10,936	-	10,936
Not Rated	<u>1,131,322</u>	<u>35,371</u>	<u>1,166,693</u>
	<u>\$ 3,735,746</u>	<u>\$ 440,756</u>	<u>\$ 4,176,502</u>

*Interest Rate Risk:*

Interest rate risk is the risk that changes in market interest rates will adversely affect the fair value of an investment. Duration is a measure of the price sensitivity of a fixed income portfolio to changes in interest rates. The longer the duration of a portfolio, the greater its price sensitivity to changes in interest rates.

The Plan and Fund's investments in fixed income securities had maturities as follows:

Investment Type	Fair Value	Less Than 1 Year	1 to 5 Years	6 to 10 Years	More Than 10 Years
U.S. Government and Agency Securities	\$ 2,198,391	\$ 29,599	\$ 674,020	\$ 567,788	\$ 926,984
Corporate Obligations	<u>1,978,111</u>	<u>33,486</u>	<u>629,854</u>	<u>520,195</u>	<u>794,576</u>
Totals	<u>\$ 4,176,502</u>	<u>\$ 63,085</u>	<u>\$ 1,303,874</u>	<u>\$ 1,087,983</u>	<u>\$ 1,721,560</u>

CITY OF SOUTH MIAMI, FLORIDA  
NOTES TO THE BASIC FINANCIAL STATEMENTS  
September 30, 2012

NOTE 3 - DEPOSITS AND INVESTMENTS (continued)

*Concentration of Credit Risk:*

The investment policy of the Plan and Fund contains limitations on the amount that can be invested in any one issuer as well as portfolio allocation percentages. GASB Statement No. 40 requires disclosure when the percentage is 5% or more in any one issuer. As of September 30, 2012, the Plan had investments in excess of 5% with the following issuers/securities: Penn Smid LP (11.3%), Vanguard 500 Index Fund (9.7%), RidgeWorth Institutional U.S. Government Securities Ultra Short Bond Fund (9.5%), Pear Tree Polaris Value Fund (8.7%), REMS Real Estate Inc. 50/50 Fund (7.6%) and Driehaus International Small Cap Growth Fund (5.3%). The Fund had investments in excess of 5% with the following issuers/securities: Federal Home Loan Mortgage Corporation (7.2%), Federal National Mortgage Association (10.3%) and investments in the United States Treasury (10.4%).

*Custodial Credit Risk:*

For an investment, custodial credit risk is the risk that, in the event of the failure of the counterparty the Plan and Fund will not be able to recover their investments or collateral securities that are in possession of an outside party. At September 30, 2012 and consistent with their investment policy, the Plan and Fund's securities were registered in their name, nominee registration.

*Foreign Credit Risk:*

Foreign credit risk is the risk that fluctuations in currency exchange rates may affect transactions conducted in currencies other than U.S. dollars as well as the carrying value of foreign investments. The Plan and Fund's exposure to foreign credit risk derives mainly from equity securities. As of the year end, investment balances in foreign investments are within policy limits. The Plan and Fund's exposure to foreign credit risk is related to the following investments:

	General Employees and Police Officers Pensin Plan	Police Officers Retirement Trust Fund Section 185	Total
Accenture PLC	\$ 39,987	\$ -	\$ 39,987
EnSCO PLC Cs A	28,317	-	28,317
Signet Jewelers LTD	65,777	-	65,777
XI Group PLC	41,692	-	41,692
Transocean LTD	23,836	-	23,836
NXP Semiconductors NV	42,192	-	42,192
Barrick Gold Corp.	25,140	-	25,140
Potash Corp. of Saskatchewan	15,805	-	15,805
TEVA Pharmaceuticals Inds. LTD	23,314	-	23,314
TELUS Corp.	-	12,536	12,536
Duetsche Telekom International FIN BV	-	5,964	5,964
	<u>\$ 306,060</u>	<u>\$ 18,500</u>	<u>\$ 324,560</u>

CITY OF SOUTH MIAMI, FLORIDA  
 NOTES TO THE BASIC FINANCIAL STATEMENTS  
 September 30, 2012

NOTE 4 - RECEIVABLES

Receivables at September 30, 2012 were as follows:

	<u>Major Fund General Fund</u>	<u>Other Nonmajor Governmental Funds</u>	<u>Total</u>
Receivable type:			
Intergovernmental	\$ 219,087	\$ 361,209	\$ 580,296
Franchise fees	175,429	-	175,429
Accounts	<u>68,375</u>	<u>264,570</u>	<u>332,945</u>
 Total receivables	 <u>\$ 462,891</u>	 <u>\$ 625,779</u>	 <u>\$ 1,088,670</u>

NOTE 5 - INTERFUND BALANCES AND TRANSFERS

Interfund balances at September 30, 2012 and the amount of interfund transfers for the fiscal year ended are summarized as follows:

	<u>Interfund Balances</u>		<u>Transfers</u>	
	<u>Interfund Receivable</u>	<u>Interfund Payable</u>	<u>Transfers In</u>	<u>Transfers Out</u>
General Fund	\$ -	\$ 781,917	\$ 300,000	\$ 2,059,132
Community Redevelopment Agency Fund	-	159,930	-	25,000
Capital Improvements Program Fund	931,602	-	1,376,582	-
Nonmajor Governmental Funds	<u>225,390</u>	<u>215,145</u>	<u>682,550</u>	<u>275,000</u>
	<u>\$ 1,156,992</u>	<u>\$ 1,156,992</u>	<u>\$ 2,359,132</u>	<u>\$ 2,359,132</u>

The interfund balances resulted from the time lag between the dates that (1) interfund goods and services are provided or reimbursable expenditures occur, (2) transactions are recorded in the accounting system, and (3) payments between funds are made. All of the above amounts are expected to be repaid shortly after year end from available current assets and next year funding.

During the year, \$ 682,550 and \$ 1,376,582 was transferred from General Fund to the Debt Service Fund and the Capital Improvements Program Fund, respectively, to assist with debt service and capital improvement project requirements. The remaining transfers were to the General Fund from the Community Redevelopment Agency Fund and other non-major funds to reimburse the General Fund for expenditures incurred.

CITY OF SOUTH MIAMI, FLORIDA  
NOTES TO THE BASIC FINANCIAL STATEMENTS  
September 30, 2012

NOTE 6 - SERVICE CONCESSION ARRANGEMENT AND NOTE RECEIVABLE

The City previously entered into an agreement with Mark Richman Properties, Inc. (“MRP”) for the construction and operation of a municipal parking garage (the “Garage”). Under the agreement, the City was responsible to finance the construction while retaining all rights and ownership of the Garage. The City borrowed funds from the Series 2002A and Series 2006A Bonds and a \$ 1 million promissory note to finance the construction of the Garage. MRP was responsible for the completion of the Garage with the use of the funds provided by the City. The Garage started operations in January 2008.

The City also executed a lease agreement (the “Lease”) with MRP to operate and maintain the Garage for a term of 50 years. In accordance with the Lease, the City approves all services and fees charged to customers. In addition, the City retains no contractual obligations for the garage until the end of the Lease at which time the operation and management of the Garage reverts to the City. Installment payments due the City under the Lease are as follows:

- (i) Repayment of principal on certain amounts used in the construction of the Garage. These amounts owed to the City by MRP are shown as notes receivable in the statement of net assets in the amount of \$ 9,065,437.
- (ii) Guaranteed rent payments equal to \$ 76,000 per year. The present value of these payments is reflected in the statement of net assets using a discount rate of 7.25% in the amount of \$ 3,189,506.

The City has determined that the Lease meets the requirements of GASB Statement No. 60; *Accounting and Financial Reporting for Service Concession Arrangements*, effective for financial statements for periods beginning after December 15, 2011. The City early implemented the provisions of this GASB pronouncement in 2010.

In accordance with GASB Statement No. 60, the City previously adjusted capital assets to include the Garage at a fair value of approximately \$ 13 million. Additionally, a liability of \$ 12,625,771 was recorded in the government-wide financial statements (statement of net assets) representing the deferred inflow of resources to be received over the term of the Lease, at their net present value. The deferred inflow of resources is recognized annually over the term of the Lease.

The notes receivable mainly require semi-annual payments including interest at rates ranging from 3.25% to 5.50% through October 1, 2036. The notes receivable are collateralized by the Garage, a mortgage on certain land owned by MRP and by a personal guarantee from Mark Richman. A portion of the notes receivable (original amount of \$ 700,000) require quarterly payments including interest at 4.23% through April 2019.

Future principal and interest payments due the City under the notes receivable, as of September 30, 2012, are approximately as follows:

<u>September 30,</u>	<u>Principal</u>	<u>Interest</u>	<u>Total</u>
2013	\$ 178,900	\$ 282,500	\$ 461,400
2014	306,300	421,100	727,400
2015	321,800	406,000	727,800
2016	333,200	389,500	722,700
2017	348,900	372,500	721,400
2018-2022	1,745,200	1,601,600	3,346,800
2023-2027	2,021,500	1,198,500	3,220,000
2028-2032	2,467,500	775,000	3,242,500
2033-2037	1,342,100	181,200	1,523,300
	<u>\$ 9,065,400</u>	<u>\$ 5,627,900</u>	<u>\$ 14,693,300</u>

**CITY OF SOUTH MIAMI, FLORIDA**  
**NOTES TO THE BASIC FINANCIAL STATEMENTS**  
September 30, 2012

**NOTE 7 - CAPITAL ASSETS**

Capital asset activity for the year ended September 30, 2012 was as follows:

	Balance October 1, 2011	Increases	Decreases	Balance September 30, 2012
	<u>                    </u>	<u>                    </u>	<u>                    </u>	<u>                    </u>
<b>Governmental Activities:</b>				
Capital assets, not being depreciated:				
Land	\$ 14,649,084	\$ 39,984	\$ -	\$ 14,689,068
Construction in progress	47,225	-	-	47,225
	<u>14,696,309</u>	<u>39,984</u>	<u>-</u>	<u>14,736,293</u>
Total capital assets, not being depreciated				
Capital assets, being depreciated:				
Buildings and improvements	18,010,663	-	-	18,010,663
Machinery and equipment	6,007,454	923,673	478,114	6,453,013
Land improvements	844,800	-	-	844,800
Infrastructure	9,226,358	-	-	9,226,358
Intangible assets	271,590	176,667	-	448,257
	<u>34,360,865</u>	<u>1,100,340</u>	<u>478,114</u>	<u>34,983,091</u>
Total capital assets, being depreciated				
Total capital assets	<u>49,057,174</u>	<u>1,140,324</u>	<u>478,114</u>	<u>49,719,384</u>
Less accumulated depreciation for:				
Buildings and improvements	2,337,450	360,193	-	2,697,643
Machinery and equipment	3,757,456	611,760	451,887	3,917,329
Land improvements	558,845	37,200	-	596,045
Infrastructure	2,323,493	217,838	-	2,541,331
Intangible assets	54,318	89,651	-	143,969
	<u>9,031,562</u>	<u>1,316,642</u>	<u>451,887</u>	<u>9,896,317</u>
Total accumulated depreciation				
Total capital assets being depreciated, net	<u>25,329,303</u>	<u>(216,302)</u>	<u>26,227</u>	<u>25,086,774</u>
Governmental activities capital assets, net	<u>\$ 40,025,612</u>	<u>\$ (176,318)</u>	<u>\$ 26,227</u>	<u>\$ 39,823,067</u>

Provision for depreciation/amortization was charged to functions/programs of the City as follows:

Governmental activities:	
General government	\$ 623,863
Public safety	294,492
Public works	311,212
Culture and recreation	57,465
Community services	29,610
	<u>1,316,642</u>
Total depreciation/amortization expense - governmental activities	<u>\$ 1,316,642</u>

**CITY OF SOUTH MIAMI, FLORIDA**  
**NOTES TO THE BASIC FINANCIAL STATEMENTS**  
September 30, 2012

**NOTE 8 - LONG TERM LIABILITIES OF GOVERNMENTAL ACTIVITIES**

The following is a summary of changes in long-term liabilities of the City for governmental activities for the year ended September 30, 2012:

	Balance October 1, 2011	Additions	Reductions	Balance September 30, 2012	Due Within One Year
<b>Governmental Activities:</b>					
Florida Municipal Loan Council Bonds	\$ 6,995,000	\$ -	\$ 185,000	\$ 6,810,000	\$ 190,000
Taxable Revenue Note, Series 2011	7,575,000	-	-	7,575,000	365,000
CRA Bond Series 2006	1,113,092	-	236,342	876,750	250,821
Notes payable	1,134,781	-	294,341	840,440	434,752
Capital leases	227,658	-	86,513	141,145	45,566
Compensated absences	1,328,717	728,358	977,058	1,080,017	291,183
Deferred loss on early retirement of FLMC Bonds	(787,113)	-	49,195	(737,918)	-
<b>Totals</b>	<b>\$ 17,587,135</b>	<b>\$ 728,358</b>	<b>\$ 1,828,449</b>	<b>\$ 16,585,434</b>	<b>\$ 1,577,322</b>

Compensated absences attributable to the governmental activities are generally liquidated by the general fund.

Florida Municipal Loan Council ("FLMC" Bonds):

The City previously borrowed \$ 2,200,000 from the Florida Municipal Loan Council's ("FMLC") debt issue of \$ 90,210,000 Revenue Bonds, Series 2001A to repay existing borrowings and finance the construction of a multi-purpose activities center. The bonds bear varying interest rates ranging from 3.25% to 5.25% and are secured by non-ad valorem revenues from the City.

The City previously borrowed \$ 6,500,000 from the FMLC's debt issue of \$ 49,775,000 Revenue Bonds, Series 2002A to finance the construction and improvements of a municipal parking garage used for public parking. The bonds bear varying interest rates ranging from 3.25% to 5.50% and are secured by non-ad valorem revenues from the City. Payments received from MRP in conjunction with the notes receivable (Note 6), future Garage revenues, and non-ad valorem revenues of the City are used to repay the bonds as the payments become due. As discussed later, this debt issuance was partially refunded during 2011 with proceeds from the issuance of the Taxable Revenue Note, Series 2011.

The City previously borrowed \$ 5,625,000 from the FMLC's debt issue of \$ 22,365,000 Revenue Bonds, Series 2006 to finance the construction and improvements of a municipal parking garage used for public parking. The bonds bear varying interest rates ranging from 4.00% to 5.00% and are secured by non-ad valorem revenues from the City. Payments received from MRP in conjunction with the notes receivable (Note 6), future Garage revenues, and non-ad valorem revenues are used to repay the bonds as the payments become due. As discussed later, this debt issuance was partially refunded during 2011 with proceeds from the issuance of the Taxable Revenue Notes, Series 2011.

CITY OF SOUTH MIAMI, FLORIDA  
NOTES TO THE BASIC FINANCIAL STATEMENTS  
September 30, 2012

NOTE 8 - LONG TERM LIABILITIES OF GOVERNMENTAL ACTIVITIES (continued)

Annual debt service requirements to maturity for the FMLC revenue bonds are as follows:

	Series 2001A		Series 2002A		Series 2006		Total
	Principal	Interest	Principal	Interest	Principal	Interest	
2013	\$ 55,000	\$ 89,363	\$ 105,000	185,169	\$ 30,000	\$ 63,419	\$ 527,951
2014	55,000	86,613	110,000	179,394	35,000	62,119	528,126
2015	60,000	83,725	120,000	173,344	35,000	60,544	532,613
2016	60,000	80,575	125,000	166,744	35,000	58,794	526,113
2017	65,000	77,425	130,000	159,869	40,000	56,919	529,213
2018-2022	385,000	332,626	765,000	686,469	220,000	255,278	2,644,373
2023-2027	480,000	229,000	975,000	472,844	280,000	203,156	2,640,000
2028-2032	620,000	96,000	1,255,000	198,594	340,000	136,575	2,646,169
2033-2037	-	-	-	-	430,000	50,175	480,175
	<u>\$ 1,780,000</u>	<u>\$ 1,075,327</u>	<u>\$ 3,585,000</u>	<u>\$ 2,222,427</u>	<u>\$ 1,445,000</u>	<u>\$ 946,979</u>	<u>\$ 11,054,733</u>

Taxable Revenue Note, Series 2011:

In August 2011, the City issued a \$ 7,575,000 Taxable Revenue Note, Series 2011, to *partially advance refund* \$ 1,725,000 and \$ 3,775,000 of the FMLC 2002A and 2006 revenue bonds, respectively, and also to *currently refund* the then remaining obligation of the Capital Improvement Promissory Note, Series 2009 in the amount of \$ 814,488. Funds were deposited into an irrevocable trust with an escrow agent to provide for the scheduled principal and interest installments of the partially advance refunded bonds, including the remaining obligations on the call date of May 1, 2012 and October 1, 2016 for the FMLC 2002A and 2006, respectively. Effective May 2012, the FMLC Series 2002A partially advanced refunded portion was considered defeased. As of September 30, 2012, the outstanding balance of the partially advanced refunded FMLC Series 2006 bonds was \$ 3,695,000.

Annual principal and semi-annual interest payments are due through October 2026 at a fixed rate of 4.550%; secured by a pledge of all non-ad valorem revenues of the City.

The City executed this refunding transaction to comply with the Securities and Exchange Commission and the Internal Revenue Service; where it was determined that a portion of the FMLC bonds constituted impermissible financing and private activity which affected the governmental status of the Council Bonds.

Annual debt service requirements to maturity are as follows:

Year Ending September 30,	Principal	Interest	Total
2013	\$ 365,000	\$ 341,053	\$ 706,053
2014	385,000	323,755	708,755
2015	400,000	305,649	705,649
2016	410,000	287,727	697,727
2017	435,000	267,477	702,477
2018-2022	2,485,000	1,011,318	3,496,318
2023-2027	<u>3,095,000</u>	<u>370,073</u>	<u>3,465,073</u>
	<u>\$ 7,575,000</u>	<u>\$ 2,907,053</u>	<u>\$ 10,482,053</u>



CITY OF SOUTH MIAMI, FLORIDA  
 NOTES TO THE BASIC FINANCIAL STATEMENTS  
 September 30, 2012

NOTE 8 - LONG TERM LIABILITIES OF GOVERNMENTAL ACTIVITIES (continued)

Community Redevelopment Agency (CRA) Bond, Series 2006:

The City, through its Community Redevelopment Agency, ("CRA") previously issued \$ 2,730,000 of Taxable Redevelopment Revenue Bonds, Series 2006 (the "CRA Bond") for the purpose of acquiring various properties located within the boundaries of the South Miami redevelopment area. The revenue bonds are secured by CRA tax increment financing revenues from the County and the City. The bonds bear interest at 5.99%. Principal and interest payments are due quarterly through February 2016.

Annual debt service requirements to maturity for the CRA Bond are as follows:

<u>Year Ending September 30,</u>	<u>Principal</u>	<u>Interest</u>	<u>Total</u>
2013	\$ 250,821	\$ 46,952	\$ 297,773
2014	266,186	31,587	297,773
2015	282,492	15,281	297,773
2016	77,251	1,216	78,467
	<u>\$ 876,750</u>	<u>\$ 95,036</u>	<u>\$ 971,786</u>

Notes Payable:

The City previously entered into promissory note agreements with a financial institution to finance the purchase of law enforcement vehicles and multi-space parking meter stations totaling approximately \$ 576,000. The notes require aggregate monthly payments of \$ 10,202, including interest at 2.355% and 2.5451% per annum. Both notes expire during fiscal year 2016. As of September 30, 2012, the balance outstanding was \$ 396,896.

The City previously entered into an agreement with a third party to finance an upgrade to its City Hall management computer software for approximately \$ 172,000. The agreement requires annual payments of \$ 34,414 and bears no interest. As of September 30, 2012, the outstanding balance of this agreement is \$ 103,242.

The City previously entered into Inter-Local agreements with Miami Dade County for the purchase of police radios and for a stormwater drainage project. The cost for the radios and project was approximately \$ 247,000 and \$ 270,000, respectively, and are payable in ten years. As of September 30, 2012, the total balance outstanding was \$ 236,226.

The City previously entered into a promissory note agreement with a financial institution to finance the purchase of law enforcement and other City vehicles totaling approximately \$ 538,000. The note requires annual principal payments of \$ 104,076, including interest at 4.25% per annum expiring February 2013. As of September 30, 2012, the balance outstanding was \$ 104,076.

CITY OF SOUTH MIAMI, FLORIDA  
 NOTES TO THE BASIC FINANCIAL STATEMENTS  
 September 30, 2012

NOTE 8 - LONG TERM LIABILITIES OF GOVERNMENTAL ACTIVITIES (continued)

Annual debt service requirements to maturity for notes payable are as follows:

<u>Year Ending September 30,</u>	<u>Principal</u>	<u>Interest</u>	<u>Total</u>
2013	\$ 434,752	\$ 13,153	\$ 447,905
2014	178,339	5,531	183,870
2015	181,187	2,686	183,873
2016	46,162	268	46,430
	<u>\$ 840,440</u>	<u>\$ 21,638</u>	<u>\$ 862,078</u>

Capital Leases:

The City previously entered into a capital lease arrangement for law enforcement vehicles totaling approximately \$ 228,000. The lease expires on July 2015. Interest rate is at 3.18%.

The future minimum lease obligation and the net present value of the minimum lease payments as of September 30, 2012 is as follows:

<u>Year Ending September 30,</u>	
2013	\$ 49,515
2014	49,515
2015	<u>49,515</u>
Total minimum lease payments	148,545
Less amount representing interest	<u>(7,400)</u>
Present value of minimum lease payments	<u>\$ 141,145</u>

Conduit Debt Obligation:

From time to time, the City has issued Healthcare Facilities Revenue Bonds to provide financial assistance to the City's private-sector hospitals for the acquisition and construction of facilities deemed to be in the public interest. The bonds are secured by the property financed and are payable solely from revenues derived from the private-sector hospitals.

In 2007, the Baptist Health South Florida ("BHSF") issued through the City of South Miami Health Facilities Authority, \$ 800,000,000 of its Hospital Revenue Bonds, Series 2007 ("2007 Bonds"). The proceeds from the bonds were used to refund then outstanding bonds and to acquire, construct, equip and rehabilitate certain health care facilities of BHSF. The 2007 Bonds bear interest at rates ranging from 4.62% to 5.00%, payable semiannually each February 15 and August 15, and mature annually on August 15 through 2042. As of September 30, 2012, the outstanding principal amount payable was \$ 750,770,000.

The City acts solely as a lawful conduit in the issuance of the bonds and is not obligated in any manner for their repayment. Accordingly, the bonds are not reported as liabilities in the accompanying financial statements.

CITY OF SOUTH MIAMI, FLORIDA  
NOTES TO THE BASIC FINANCIAL STATEMENTS  
September 30, 2012

NOTE 9 - COMMITMENTS AND CONTINGENCIES

Grants:

Amounts received or receivable from grant agencies are subject to audit and adjustment by grantor agencies. Any disallowed claims, including amounts already collected, may constitute a liability of the City. The amount, if any, of expenditures which may be disallowed by the grantor cannot be determined at this time although the City expects such amounts, if any, to be immaterial.

Litigation - General Matters:

The City is currently a defendant in several pending claims and other legal proceedings incidental to the operations of the City. The City attorneys are vigorously defending each action. The ultimate liability and likelihood related to these claims is not presently determinable.

Securities and Exchange Commission ("SEC") and Internal Revenue Service Investigation ("IRS"):

Previously, the SEC opened a formal investigation pertaining to certain bonds issued in 2002 and 2006 by the Florida Municipal Loan Council ("FLMC"), the proceeds of which were used in connection with the construction and improvements of the City parking garage project (Notes 6 and 8). The City cooperated fully with the SEC investigation and have reached a conceptual settlement, subject to documentation and required approvals, pursuant to which no payment is required by the City.

In addition, the City notified the IRS and the FLMC, as dissemination agent with respect to the bonds, of the ongoing SEC investigation. The FLMC and the City initiated with the IRS the process for requesting a voluntary closing agreement to resolve issues which could affect the tax-exempt status of interest on the bonds. After a period of investigation, the parties reached a resolution, which was concluded in August 2011, whereby the City paid approximately \$ 276,000 to the IRS, the IRS closed its inquiry, and the tax-exempt status of the bond interest was preserved.

No formal charges or claims have been asserted against the City by either the SEC or the IRS, and there is no litigation pending.

NOTE 10 - OTHER POST-EMPLOYMENT BENEFITS

The City previously implemented GASB Statement No. 45, *Accounting and Financial Reporting by Employers for Postemployment Benefits Other Than Pensions* ("OPEB"). This statement established accounting standards for post-retirement benefits other than pensions. The standard does not require funding of OPEB expense, but any difference between the annual required contribution ("ARC") and the amount funded during the year is required to be recorded in the City's Statement of Net Assets as an increase (or decrease) in the OPEB obligation.

Plan Description and Funding Policy:

Employees who retire from the City and their dependents are eligible to continue to participate ("single employer plan") in the City's health insurance, dental and vision plans currently offered through the City at the "blended" employee group rate, which is determined annually by the City. The retiree must continue to meet all participation requirements and pay all applicable premiums by the specified due date. As of October 1, 2011, the date of the most recent actuarial evaluation, there are six participating retirees in the group health program.

CITY OF SOUTH MIAMI, FLORIDA  
 NOTES TO THE BASIC FINANCIAL STATEMENTS  
 September 30, 2012

NOTE 10 - OTHER POST-EMPLOYMENT BENEFITS (continued)

The City provides no funding for any portion of the premiums after retirement. However, the City recognizes that there is an “implicit subsidy” arising as a result of the blended rate premium since retiree health care costs, on average, are higher than active employee healthcare costs. The plan is not accounted for as a trust fund and an irrevocable trust has not been established to fund this plan. The plan does not issue a separate financial report. It is the City’s current policy to fund the plan on a “pay-as-you-go” basis.

The General Fund is typically used to liquidate the annual net other post-employment obligations of the City.

Annual OPEB Cost and Net OPEB Obligation:

The following table shows the components of the City’s annual OPEB cost for the year, the amount contributed, and the change in the net OPEB obligation.

<u>Development of the Annual Required Contribution (ARC)</u>	
Employer Normal Cost	\$ 24,697
Amortization of Unfunded Actuarial Accrued Liability	19,708
Amortization of Net OPEB Obligation	1,776
Annual Required Contribution	46,181
Interest on Net OPEB obligation	2,160
Adjustment to the ARC	(3,123)
Annual OPEB Cost	45,218
Estimated Annual Employer Contribution (pay-as-you-go) *	(15,614)
Change in Net OPEB Obligation	29,604
Net OPEB obligation - Beginning of Year	54,000
Net OPEB obligation - End of Year	\$ 83,604

\* Reflects a contribution credit for the implied subsidy.

The annual OPEB cost, the percentage of annual OPEB cost contributed to the Plan and the net OPEB obligation for 2012 and the two preceding years were as follows:

<u>Fiscal Year Ended</u>	<u>Annual OPEB Cost</u>	<u>Percentage of OPEB Cost Contributed</u>	<u>Net OPEB Obligation</u>
9/30/2012	\$ 45,218	34.5%	\$ 83,604
9/30/2011	\$ 38,000	28.9%	\$ 54,000
9/30/2010	\$ 38,000	28.9%	\$ 27,000

**CITY OF SOUTH MIAMI, FLORIDA**  
**NOTES TO THE BASIC FINANCIAL STATEMENTS**  
September 30, 2012

**NOTE 10 - OTHER POST-EMPLOYMENT BENEFITS (continued)**

Funding Status and Funding Progress:

The schedule of funding progress, presented as required supplementary information following the notes to the financial statements, presents multiyear trend information about whether the actuarial value of plan assets are increasing or decreasing over time relative to the actuarial accrued liability for benefits. The funded status and an analysis of funding progress as of October 1, 2011, the date of the most recent actuarial valuation, is as follows:

Valuation Date	Actuarial Value of Assets (a)	Actuarial Accrued Liability At Entry Age (b)	Unfunded Actuarial Accrued Liability (UAAL) (b-a)	Funded Ratio (a/b)	Covered Payroll (c)	UAAL as Percentage of Covered Payroll ((b-a)/c)
10/1/2011	\$ -	\$ 354,421	\$ 354,421	0.0%	\$ 5,365,146	6.6%

Actuarial valuations involve estimates of the value of reported amounts and assumptions about the probability of events in the future. Amounts determined regarding the status of the plan and the annual required contributions of the City are subject to continual revision as actual results are compared to past expectations and new estimates are made about the future. The required schedule of funding progress, presented as Required Supplementary Information, is designed to provide multi-year trend information that shows whether the actuarial value of the plan assets is increasing or decreasing over time relative to the actuarial liabilities for benefits.

Actuarial Methods and Assumptions:

Projections of benefits are based on the substantive plan and include the types of benefits in force at the time of valuation date and the pattern of sharing benefits between the City and the plan members at that point. Actuarial calculations reflect a long-term perspective and employ methods and assumptions that are designed to reduce the short-term volatility in actuarial accrued liabilities and the actuarial value of assets. Significant methods and assumptions used for the valuation are as follows:

Measurement date	October 1, 2011
Actuarial cost method	Entry age normal
Amortization method	Level dollar amount, open basis
Remaining amortization period	30-years
Actuarial assumptions:	
Investment rate of return	4.00% (includes inflation at 2.75% per annum)
Healthcare cost trend rates:	
Select rates	9.00% for 2011/12 graded to 8.00% for 2012/13, and 5.00% for 2013/14 through 2015/16
Ultimate rate	5.00% per annum

CITY OF SOUTH MIAMI, FLORIDA  
NOTES TO THE BASIC FINANCIAL STATEMENTS  
September 30, 2012

NOTE 11 - DEFINED BENEFIT PENSION PLAN

Plan Description:

The City sponsors and maintains the General Employees and Police Officers Pension Plan (the "Plan"), a single-employer defined benefit pension plan established by Ordinance No. 528 dated December 7, 1965, effective October 1, 1965. The Plan covers police officers and other full-time general employees of the City who are eligible to participate in the Plan and who fulfill the prescribed eligibility requirements. The most recent amendment to the Plan occurred on November 1, 2011 which became effective on October 1, 2011.

City Ordinance No. 33-11-2106 amended the Plan to reflect changes in *eligibility requirements, definition of final average compensation, normal retirement eligibility, benefit accrual percentages and supplemental benefit* for General Employees. The definition of *final average compensation* has also been updated for most Police Officers. A more detailed description of the Plan and its provisions appears in the Ordinances constituting the Plan and in the summary plan description.

The City has issued stand-alone financial statements for the Plan, which may be obtained from the City's Finance Department.

Summary of Significant Accounting Policies:

The Plan for both general and police employees, utilizes the accrual basis of accounting. Plan member contributions are recognized in the period in which the contributions are due. Employer contributions to the Plan are recognized when due and the employer has made a formal commitment to provide the contributions. Benefits and refunds are recognized when due and payable in accordance with the terms of the Plan.

Funding Policy:

The City's annual required contribution is determined annually by an independent third party actuary, and is together with earnings and employee contributions, sufficient to fund the benefits described below. For the year ended September 30, 2012, the aggregate contribution requirement for the City and Plan participants was determined at 30.3% (including 13.7% for participants) and 36.5% (including 15.6% for participants) for general employees and police officers, respectively. In accordance with a City ordinance, should the aggregate participants and City's annual contribution be actuarially determined to exceed 14% and 15%, for general employees and police officers, respectively, both participants and the City shall share equally in such excess percentage.

The Police Officers Pension Plan also receives contributions from the State of Florida. During the fiscal year ended September 30, 2012, the City received \$ 84,837 from the State which was generated from the insurance premium tax as part of the required funding for the Police Pension Plan and recorded revenues and expenditures in the General Fund, as appropriate.

The General Fund is typically used to liquidate the annual net pension obligations of the City.

CITY OF SOUTH MIAMI, FLORIDA  
 NOTES TO THE BASIC FINANCIAL STATEMENTS  
 September 30, 2012

NOTE 11 - DEFINED BENEFIT PENSION PLAN (continued)

Method Used to Value Investments:

Investments in common stocks and international equity, mutual funds, corporate obligations and U.S. government securities are valued at quoted fair market prices determined by last reported sales price. Net appreciation or depreciation in fair value of investments, realized and unrealized gains and losses are determined on the basis of specific cost. Purchases and sales of securities are recorded on a trade-date basis.

Eligibility:

General Employees:

Eligibility requirements: The Plan is only available to regular full-time employees who were employed *prior to October 1, 2011* and had completed six months of credited service and attainment of age 20.

All general employees who were participating in the Plan as of September 30, 2011 had the option to elect to remain in the Plan or participate in a newly created defined contribution plan under the provisions of Section 457(b) (the "457(b) Plan"). For those participants who elected to discontinue their participation, the Plan refunded their portion of contributions or amounts were rolled over to the 457(b) Plan as additional employee contributions.

Police Officers:

Full-time police officers are eligible to participate in the plan as of date of employment.

As of September 30, 2012, the Plan membership consisted of:

	General Employees	Police
Active Plan members	44	45
Terminated vested	3	5
Receiving benefits	23	19
	70	69

Benefits:

*Normal retirement:*

*General Employees:* Attainment of age 55 and completion of 10 years of credited services for benefits accrued at September 30, 2011. Attainment of age 60 and completion of 10 years of credited services for benefits accrued after September 30, 2011, including increases in the accrued benefit as of September 30, 2011 due to increases in the final average compensation. These general employees are entitled to retirement benefits ranging from 2.50% to 2.75% of their final monthly compensation ("FMC") based on years of credited service.

CITY OF SOUTH MIAMI, FLORIDA  
NOTES TO THE BASIC FINANCIAL STATEMENTS  
September 30, 2012

NOTE 11 - DEFINED BENEFIT PENSION PLAN (continued)

*Police Officers:* Attainment of age 60 and completion of 10 years of credited services or completion of 25 years of credited services regardless of age. These police officers are entitled to retirement benefits ranging from 2.00% to 3.00% of the FMC based on years of credited service.

A cost-of-living supplemental benefit based upon the consumer price index is provided upon retirement. The annual increase is limited to 3.00%. For general employees, accrued benefits from October 1, 2011 and thereafter are not subject to the cost-of-living supplemental benefit adjustment.

Final average compensation is 1/36<sup>th</sup> of the final 36 consecutive months of compensation. For police officers, not less than 1/5<sup>th</sup> of the highest 5 years out of the last 10 years of compensation. Compensation shall mean regular wages and salaries, excluding bonuses, vacation, sick leave and other additional compensation. Effective October 1, 2011, final average compensation for general employees is 1/60<sup>th</sup> of the final 60 consecutive months of basic compensation, provided is not less than the final average compensation at September 30, 2011, based on the definition above. Basic compensation shall mean base wages and salaries, excluding commissions, overtime pay, bonuses and any other forms of additional compensation earned outside of base wages. Effective October 1, 2011, final average compensation for members covered under the police officers and sergeants collective bargaining agreements is the best of 5 years of basic compensation, provided is not less than the final average compensation as of September 30, 2011 based on the definition above. Basic compensation shall mean base wages and salaries, including up to 300 hours of overtime in a fiscal year and excluding payments for accrued unused sick or annual leave, extra duty or special detail work, shift differential, assignment pay, bonuses and other forms of additional compensation earned outside of base wages.

*Early retirement:*

Police officers may elect early retirement at age 50 after 15 years of credited service. Benefits shall be based upon FMC and credited service as of early retirement date, reduced by 3% for each year that the benefit commencement date precedes normal retirement.

*Disability retirement:*

Members who become totally and permanently disabled for a six month period while actively employed are eligible. Benefits for disability retirement will be based upon the FMC and credited service as of the date of disability, actuarially reduced for early retirement.

*Pre-retirement death:*

Death benefits are payable on behalf of members who die prior to retirement. A surviving beneficiary will receive the member's accumulated employee contributions.

Vesting:

Benefits are fully vested after 10 years of continuous service.



CITY OF SOUTH MIAMI, FLORIDA  
NOTES TO THE BASIC FINANCIAL STATEMENTS  
September 30, 2012

NOTE 11 - DEFINED BENEFIT PENSION PLAN (continued)

Annual Pension Cost and Net Pension Obligation:

The actuarial assumptions, as of the valuation dated October 1, 2011, and effective for the current fiscal year are as follows:

	<u>General Employees</u>	<u>Police Officers</u>
Actuarial valuation date	10/1/2011	10/1/2011
Actuarial cost method	Entry age normal	Entry age normal
Amortization method	Level dollar, closed	Level percent of pay, closed
Remaining amortization period	23 years	25 years
Asset valuation method	5-year smoothed market	5-year smoothed market
Actuarial assumptions:		
Investment rate of return	7.0%	7.0%
Projected salary increases	4.5% - 7.5%	4.0% - 7.0%
Includes inflation at	4.0%	4.0%
Cost-of-living adjustment	3.0%	3.0%

The City's annual pension cost and net pension obligation (asset) for the current year were as follows:

	<u>General Employees</u>	<u>Police Officers</u>	<u>Total</u>
Annual required contribution (ARC)	\$ 414,833	\$ 607,142	\$ 1,021,975
Interest on net pension obligation (asset)	(2,726)	(1,452)	(4,178)
Adjustment to ARC	<u>3,138</u>	<u>1,671</u>	<u>4,809</u>
Annual pension cost	415,245	607,361	1,022,606
Contributions made	<u>(414,833)</u>	<u>(607,142)</u>	<u>(1,021,975)</u>
Increase (decrease) in net pension obligation (asset)	412	219	631
Net pension obligation (asset), beginning of year	<u>(38,941)</u>	<u>(20,742)</u>	<u>(59,683)</u>
Net pension obligation (asset), end of year	<u><u>\$ (38,529)</u></u>	<u><u>\$ (20,523)</u></u>	<u><u>\$ (59,052)</u></u>

**CITY OF SOUTH MIAMI, FLORIDA**  
**NOTES TO THE BASIC FINANCIAL STATEMENTS**  
September 30, 2012

**NOTE 11 - DEFINED BENEFIT PENSION PLAN (continued)**

Trend Information:

Trend information indicates the progress made in accumulating sufficient assets to pay benefits when due. An analysis of funding progress for the year ended September 30, 2012 and the two previous years is as follows:

<u>Years Ending September 30,</u>	<u>Annual Pension Cost (APC)</u>	<u>Percentage of APC Contributed</u>	<u>Net Pension Obligation (Asset)</u>
<b>General Employees:</b>			
2012	\$ 415,245	100%	\$ (38,529)
2011	\$ 625,178	101%	\$ (38,941)
2010	\$ 694,396	100%	\$ (33,086)
<b>Police Officers:</b>			
2012	\$ 607,361	100%	\$ (20,523)
2011	\$ 641,500	100%	\$ (20,742)
2010	\$ 562,235	100%	\$ (19,955)

Schedule of Funding Progress:

The schedule of funding progress, presented as required supplementary information (RSI) immediately following the notes to the financial statements, presents multi-year trend information about whether the actuarial value of plan assets is increasing or decreasing over time relative to the actuarial accrued liability for benefits. The funded status of the Plan as of October 1, 2012, the most recent valuation date, is as follows:

	<u>Actuarial Value of Assets (a)</u>	<u>Actuarial Liability At Entry Age (AAL) (b)</u>	<u>Unfunded Actuarial Accrued Liability (UAAL) (b-a)</u>	<u>Funded Ratio (a/b)</u>	<u>Covered Payroll (c)</u>	<u>UAAL as Percentage of Covered Payroll ((b-a)/c)</u>
General Employees	\$ 11,132,152	\$ 13,238,398	\$ 2,106,246	84.1%	\$ 2,003,855	105.1%
Police Officers	\$ 13,768,692	\$ 18,630,683	\$ 4,861,991	73.9%	\$ 2,857,846	170.1%

**NOTE 12 - DEFINED CONTRIBUTION PLANS**

Police Officers Retirement Trust Fund - Section 185 Plan:

The City sponsors and maintains the Police Officers Retirement Trust Fund - Section 185 Plan (the "Fund"), which accounts for the financial activity of the separate plan for police officers established under the provisions of Chapter 185 of the Florida Statutes. The City and participating members do not contribute to the Fund.

CITY OF SOUTH MIAMI, FLORIDA  
NOTES TO THE BASIC FINANCIAL STATEMENTS  
September 30, 2012

NOTE 12 - DEFINED CONTRIBUTION PLANS (continued)

A Board of Trustees administers this account, which is made up of representatives of the police officers and the City. Statutory authority vests with the Board of Trustees with autonomy in the administration and control over the Fund. The City has issued stand-alone financial statements for the Fund, which may be obtained from the City's Finance Department.

401(a) Money Purchase Plans:

The City is a single employer that contributes to three (3) defined contribution pension plans based upon employee classification created in accordance with the Internal Revenue Code Section 401(a) (the "401(a) Plans"). The 401(a) Plans cover certain upper level members of management who have elected to participate. The City Commission executed a resolution for the City to make contributions of up to 7% of participating members' earnings into the plan and specific dollar amounts for two individuals in accordance with their employment contracts. During the year ended September 30, 2012, City contributions on behalf of members of management were approximately \$ 82,800.

In addition to the previously existing 401(a) Plans, the City also makes matching contributions on behalf of employees who are participating in the newly established 457(b) Plan under the provisions of Section 401(a). Those contributions during the year ended September 30, 2012 were approximately \$ 28,600.

The 401(a) Plan assets are administered by ICMA Retirement Corporation. The City does not exercise any control nor have fiduciary responsibility over the 401(a) Plan assets. Therefore, the assets, liabilities and transactions are not included in the City's financial statements.

Employees 457(b) Deferred Compensation Plans:

The City previously established a deferred compensation plan under the provisions of the Internal Revenue Code Section 457(b) to provide additional benefits at retirement to those employees who elected not to participate in the City's pension plan. Under this plan, no contributions are required by the City on behalf of employees. The City provided additional compensation to several employees totaling approximately \$ 13,900. This additional compensation was credited into this plan.

During the current year and in accordance with Ordinance No. 33-11-2106, a newly defined contribution plan under the provisions of the Internal Revenue Code Section 457(b) was created. The 457(b) Plan was established to provide benefits at retirement to general employees and police officers who were hired on or after October 1, 2011 and other employees who are eligible but have elected not to participate in the City's defined benefit plan. Employee contributions to this plan are matched dollar-for-dollar by the City in amounts ranging from 3% to 7%, based upon employee classification. Required City matching contributions in the 457(b) Plan are credited into the newly created defined contribution plan under the provisions of the Internal Revenue Code Section 401(a).

Under the provisions of GASB Statement No. 32, *Accounting and Financial Reporting for IRS Code Section 457 Deferred Compensation Plans*, all assets and liabilities of the 457(b) plans are held in trust for the exclusive benefit of the participants. Accordingly, the assets and liabilities of the 457(b) plans are not included in the City's financial statements. The plan assets are administered by ICMA Retirement Corporation. The City does not exercise any control nor have fiduciary responsibility over the plan assets.

CITY OF SOUTH MIAMI, FLORIDA  
NOTES TO THE BASIC FINANCIAL STATEMENTS  
September 30, 2012

NOTE 13 – RISK MANAGEMENT

The City is exposed to various risks of loss related to torts, theft of, damage to and destruction of assets, errors and omissions and natural disasters for which the City carries commercial insurance. The City has not had a significant reduction in insurance coverage from coverage in the prior year by major categories of risk, and settled claims have not exceeded the City's retention and excess coverage in force for each of the past three years.

**REQUIRED SUPPLEMENTARY  
INFORMATION**

**CITY OF SOUTH MIAMI, FLORIDA**  
**REQUIRED SUPPLEMENTARY INFORMATION**  
**BUDGETARY COMPARISON SCHEDULE - GENERAL FUND**  
**For the Year Ended September 30, 2012**

	Budgeted Amounts		Actual Amounts	Variance with Final Budget
	Original	Final		
<b>REVENUES:</b>				
Taxes:				
Ad valorem	\$ 6,297,110	\$ 6,297,110	\$ 5,625,840	\$ (671,270)
Utility taxes	1,869,357	1,869,357	2,020,473	151,116
Business taxes	627,000	627,000	640,860	13,860
Franchise fees	968,970	968,970	1,047,915	78,945
Licenses and permits	566,500	566,500	667,219	100,719
Intergovernmental	1,227,460	1,227,460	1,320,645	93,185
Charges for services	4,144,000	4,144,000	4,065,036	(78,964)
Fines and forfeitures	151,000	151,000	187,560	36,560
Rents and royalties	186,078	186,078	244,459	58,381
Interest income	125,000	125,000	109,794	(15,206)
Other	198,000	198,000	247,982	49,982
<b>Total revenues</b>	<b>16,360,475</b>	<b>16,360,475</b>	<b>16,177,783</b>	<b>(182,692)</b>
<b>EXPENDITURES:</b>				
Current:				
General government:				
City commission	92,984	92,984	85,881	7,103
City manager	1,679,963	1,625,112	1,472,484	152,628
City clerk	260,860	260,860	252,952	7,908
Legal	375,000	425,000	419,657	5,343
Finance	866,967	866,967	810,060	56,907
<b>Total general government</b>	<b>3,275,774</b>	<b>3,270,923</b>	<b>3,041,034</b>	<b>229,889</b>
Public safety:				
Police	6,098,452	6,108,452	5,955,548	152,904
Building, zoning and community development	1,172,898	1,172,898	1,133,188	39,710
<b>Total public safety</b>	<b>7,271,350</b>	<b>7,281,350</b>	<b>7,088,736</b>	<b>192,614</b>
Public works	3,996,679	4,023,145	3,771,693	251,452
Culture and recreation	1,224,208	1,226,490	1,034,205	192,285
Debt Service:				
Principal	318,724	318,724	317,581	1,143
Interest and fiscal charges	25,717	25,717	24,664	1,053
<b>Total expenditures</b>	<b>16,112,452</b>	<b>16,146,349</b>	<b>15,277,913</b>	<b>868,436</b>
<b>Excess of revenues over expenditures</b>	<b>248,023</b>	<b>214,126</b>	<b>899,870</b>	<b>685,744</b>
<b>OTHER FINANCING SOURCES (USES):</b>				
Transfers in	416,253	416,253	416,253	-
Transfers out	(2,631,155)	(2,631,155)	(2,059,132)	572,023
<b>Total other financing sources (uses)</b>	<b>(2,214,902)</b>	<b>(2,214,902)</b>	<b>(1,642,879)</b>	<b>572,023</b>
<b>Net change in fund balance</b>	<b>\$ (1,966,879)</b>	<b>\$ (2,000,776)</b>	<b>\$ (743,009)</b>	<b>\$ 1,257,767</b>

CITY OF SOUTH MIAMI, FLORIDA  
 REQUIRED SUPPLEMENTARY INFORMATION  
 BUDGETARY COMPARISON SCHEDULE - GENERAL FUND  
 (continued)  
 For the Year Ended September 30, 2012

EXPLANATION OF DIFFERENCES BETWEEN CHANGE IN FUND BALANCE -  
 BUDGET TO ACTUAL AND STATEMENT OF REVENUES, EXPENDITURES,  
 AND CHANGES IN FUND BALANCE - GENERAL FUND

Net change in fund balance - budget to actual - General Fund, page 50 \$ (743,009)

Amounts reported for budget to actual are different because:

Revenues and expenditures in certain funds are reported in those funds for budgetary purposes; but in the General Fund for the purpose of the Statement of Revenues, Expenditures and Changes in Fund Balances - Governmental Funds:

Net change in fund balance - Emergency Reserve Fund (1) (96,682)

General Fund net change in fund balance per the Statement of Revenues, Expenditures, and Changes in Fund Balances - Governmental Funds - Page 18 \$ (839,691)

(1) See budget to actual comparison schedule on page 60.

CITY OF SOUTH MIAMI, FLORIDA  
 REQUIRED SUPPLEMENTARY INFORMATION  
 BUDGETARY COMPARISON SCHEDULE  
 COMMUNITY REDEVELOPMENT AGENCY FUND  
 For the Year Ended September 30, 2012

	Budgeted Amounts		Actual Amounts	Variance with Final Budget
	Original	Final		
<b>REVENUES:</b>				
Ad valorem taxes	\$ 1,081,767	\$ 1,081,767	\$ 1,081,767	\$ -
Rents and royalties	35,000	35,000	31,149	(3,851)
Interest income	10,500	10,500	15,659	5,159
Other	-	-	291	291
	<u>1,127,267</u>	<u>1,127,267</u>	<u>1,128,866</u>	<u>1,599</u>
Total revenues				
<b>EXPENDITURES:</b>				
Current:				
General government:				
Community redevelopment	2,176,312	2,098,094	1,149,346	948,748
Capital outlay	292,866	371,074	137,049	234,025
Debt service:				
Principal	141,223	236,342	236,342	-
Interest	156,541	61,432	61,432	-
	<u>2,766,942</u>	<u>2,766,942</u>	<u>1,584,169</u>	<u>1,182,773</u>
Total expenditures				
Excess (deficiency) of revenues over expenditures	<u>(1,639,675)</u>	<u>(1,639,675)</u>	<u>(455,303)</u>	<u>1,184,372</u>
<b>OTHER FINANCING USES:</b>				
Transfers out	<u>(25,000)</u>	<u>(25,000)</u>	<u>(25,000)</u>	<u>-</u>
Net change in fund balance	<u><u>\$ (1,664,675)</u></u>	<u><u>(1,664,675)</u></u>	<u><u>\$ (480,303)</u></u>	<u><u>\$ 1,184,372</u></u>



CITY OF SOUTH MIAMI, FLORIDA  
REQUIRED SUPPLEMENTARY INFORMATION  
NOTES TO BUDGETARY COMPARISON SCHEDULES  
September 30, 2012

NOTE 1 - BUDGETS AND BUDGETARY ACCOUNTING

Annual appropriated budgets are adopted on a basis of accounting other than GAAP. Encumbrance accounting, under which purchase orders, contracts and other commitments for the expenditure of monies are recorded in order to reserve that portion of the applicable appropriation, is employed as an extension of formal budgetary integration in the governmental funds. All governmental funds adopted a budget with the exception of the Grants Fund.

The following procedures are used by the City in establishing the budgetary data reflected in the financial statements.

- a) Prior to August 1, the City Manager submits to the City Commission a proposed operating budget for the fiscal year commencing the following October 1. The operating budget includes proposed expenditures and the means of financing them.
- b) Public hearings are conducted to obtain taxpayer comments.
- c) Prior to October 1, the budget is legally enacted through the passage of an ordinance.
- d) At the request of the City Manager and within the last three months of the budget year, the City Commission may transfer any unencumbered balance or portion thereof from one department to another. All budget fund transfers require a resolution from the City Commission. Pursuant to the City's Charter, expenditures may not legally exceed appropriations at the departmental level.
- e) Formal budgetary integration is employed as a management control device during the year.
- f) In instances where budget appropriations and estimated revenues have been revised during the year, budget data presented in the financial statements and schedules represent final authorized amounts. Therefore, the department level is the legal level of budgetary control. Budgeted amounts are as originally adopted or as amended.

Revisions that alter the total expenditures of any department within a fund must be approved by the City Commission. Actual expenditures and transfers out may not exceed budget appropriations at the departmental level. Appropriations that are neither expended, encumbered, nor specifically designated to be carried over, lapse at the end of the fiscal year.

CITY OF SOUTH MIAMI, FLORIDA  
 REQUIRED SUPPLEMENTARY INFORMATION  
 NOTES TO BUDGETARY COMPARISON SCHEDULES  
 (continued)  
 September 30, 2012

NOTE 2 - BUDGET/GAAP RECONCILIATION

The following schedule reconciles the amounts on the budgetary comparison schedule to the amounts on the statement of revenues, expenditures and changes in fund balances - governmental funds:

	Community Redevelopment Agency Fund	Peoples Transportation Tax Fund (Non-major Fund)	Local Option Gas Tax Fund (Non-major Fund)	Stormwater Drain Trust Fund (Non-major Fund)
Net change in fund balance - amounts as reported on the budgetary comparison schedule	(1) \$ <u>(480,303)</u>	(2) \$ <u>318,094</u>	(3) \$ <u>(25,759)</u>	(6) \$ <u>(92,701)</u>
Encumbrances outstanding September 30, 2011	(136,159)	(50,714)	(42,824)	-
Encumbrances outstanding September 30, 2012	<u>129,754</u>	<u>10,481</u>	<u>-</u>	<u>80,711</u>
Net change in encumbrances	<u>(6,405)</u>	<u>(40,233)</u>	<u>(42,824)</u>	<u>80,711</u>
Net change in fund balance - as reported on the statement of revenues, expenditures and changes in fund balances - governmental funds	(4) \$ <u><u>(486,708)</u></u>	(5) \$ <u><u>277,861</u></u>	(5) \$ <u><u>(68,583)</u></u>	(5) \$ <u><u>(11,990)</u></u>

(1) see page 52      (4) see page 18  
 (2) see page 61      (5) see page 59  
 (3) see page 60      (6) see page 62

CITY OF SOUTH MIAMI, FLORIDA  
 REQUIRED SUPPLEMENTARY INFORMATION  
 SCHEDULE OF FUNDING PROGRESS  
 GENERAL EMPLOYEES PENSION TRUST FUND  
 For the Last Six Fiscal Years

Actuarial Valuation Date	Actuarial Value of Assets (a)	Actuarial Accrued Liability at Entry Age (AAL) (b)	Unfunded Actuarial Accrued Liability (UAAL) (b-a)	Funded Ratio (a/b)	Covered Payroll (c)	UAAL as a Percentage of Covered Payroll ((b-a)/c)
October 1, 2007	\$ 8,534,387	\$ 10,652,651	\$ 2,118,264	80.1%	\$ 3,192,696	66.3%
October 1, 2008	\$ 9,237,641	\$ 11,331,288	\$ 2,093,647	81.5%	\$ 3,346,534	62.6%
October 1, 2009	\$ 9,957,659	\$ 13,727,750	\$ 3,770,091	72.5%	\$ 4,436,444	85.0%
October 1, 2010	\$ 10,852,137	\$ 15,521,998	\$ 4,669,861	69.9%	\$ 3,763,350	124.1%
October 1, 2011	\$ 11,330,151	\$ 13,477,722	\$ 2,147,571	84.1%	\$ 2,373,100	90.5%
October 1, 2012	\$ 11,132,152	\$ 13,238,398	\$ 2,106,246	84.1%	\$ 2,003,855	105.1%

Year Ended September 30,	Annual Required Contribution (ARC)	Percentage Contributed
2007	\$ 365,630	100.0%
2008	\$ 350,334	100.0%
2009	\$ 389,512	100.0%
2010	\$ 694,702	100.0%
2011	\$ 625,038	101.0%
2012	\$ 414,833	100.0%

**CITY OF SOUTH MIAMI, FLORIDA**  
**REQUIRED SUPPLEMENTARY INFORMATION**  
**SCHEDULE OF FUNDING PROGRESS**  
**POLICE OFFICERS PENSION TRUST FUND**  
For the Last Six Fiscal Years

Actuarial Valuation Date	Actuarial Value of Assets (a)	Actuarial Accrued Liability at Entry Age (AAL) (b)	Unfunded Actuarial Accrued Liability (UAAL) (b-a)	Funded Ratio (a/b)	Covered Payroll (c)	UAAL as a Percentage of Covered Payroll ((b-a)/c)
October 1, 2007	\$ 10,206,758	\$ 13,475,809	\$ 3,269,051	75.7%	\$ 3,172,573	103.0%
October 1, 2008	\$ 11,047,956	\$ 14,524,122	\$ 3,476,166	76.1%	\$ 2,857,555	121.6%
October 1, 2009	\$ 11,648,372	\$ 16,050,973	\$ 4,402,601	72.6%	\$ 3,183,318	138.3%
October 1, 2010	\$ 12,444,607	\$ 18,330,874	\$ 5,886,267	67.9%	\$ 3,067,558	191.8%
October 1, 2011	\$ 13,105,560	\$ 17,872,619	\$ 4,767,059	73.3%	\$ 3,050,052	156.3%
October 1, 2012	\$ 13,768,692	\$ 18,630,683	\$ 4,861,991	73.9%	\$ 2,857,846	170.1%

Year Ended September 30,	Annual Required Contribution (ARC)	Percentage Contributed
2007	\$ 428,438	100.0%
2008	\$ 418,852	100.0%
2009	\$ 454,219 *	100.0%
2010	\$ 562,544	100.0%
2011	\$ 641,549	100.0%
2012	\$ 607,142	100.0%

\* The City contribution amount for Police Officers reflects an adjustment in the amount of \$ 3,285 due to the interest charge for a late payment due to a delay in receipt of state funds.

**CITY OF SOUTH MIAMI, FLORIDA**  
**REQUIRED SUPPLEMENTARY INFORMATION**  
**SCHEDULE OF FUNDING PROGRESS**  
**PAY-AS-YOU-GO APPROACH**  
**OTHER POST-EMPLOYMENT HEALTH CARE BENEFITS**

Actuarial Valuation Date	Actuarial Value of Assets (a)	Actuarial Accrued Liability - Entry Age (AAL) (b)	Unfunded Actuarial Accrued Liability (UAAL) (b-a)	Funded Ratio (a/b)	Covered Payroll (c)	UAAL as a Percentage of Covered Payroll ((b-a)/c)
* October 1, 2010	\$ -	\$ 191,000	\$ 191,000	0.0%	\$ 8,447,000	2.3%
October 1, 2011	\$ -	\$ 354,421	\$ 354,421	0.0%	\$ 5,365,146	6.6%

\* Year of GASB Statement No. 45 implementation. No prior information is available.

# OTHER FINANCIAL INFORMATION

## NON MAJOR GOVERNMENTAL FUNDS

### SPECIAL REVENUE FUNDS

Grants Fund - This fund accounts for grant funds received that are restricted for certain types of projects/services. Revenue within this fund is recognized when the related expenditures are incurred and meet the respective grant requirements.

Stormwater Drain Trust Fund - This fund accounts mainly for the revenues associated with an inter-local agreement with the Miami-Dade County, Water and Sewer Department related to stormwater charges. The revenues are used for the management and maintenance of existing catch basins, stormwater drains and canal system, and future construction of the City's system.

Local Option Gas Tax - This fund is used to account for the revenues and expenditures associated with the State of Florida's Local Option Gas Tax.

Peoples Transportation Tax Fund - This fund is used to account for the revenues and expenditures associated with the Miami-Dade County Peoples Transportation Tax.

Federal Forfeiture Fund - To account for proceeds received from the Federal government as a result of the City participating in investigations that resulted in Federal forfeitures. Proceeds are used for law enforcement purposes.

State Forfeiture Fund - To account for proceeds obtained through the sale of confiscated and unclaimed property turned over to the City through court judgments. Proceeds are to be used solely for crime fighting purposes.

Hometown District Improvement Trust Fund - This fund accounts for monies received that are to be used for improvements to parking facilities, infrastructure to increase parking capacity, and the installation of metering devices.

### DEBT SERVICE FUND

Debt Service Fund - This fund is used to account for the accumulation of resources to pay for the payment of the principal and interest of the City's bonds and certain notes payable.

**CITY OF SOUTH MIAMI, FLORIDA**  
**COMBINING BALANCE SHEET**  
**NONMAJOR GOVERNMENTAL FUNDS**  
**September 30, 2012**

	Special Revenue Funds								Total Nonmajor Governmental Funds
	Grants Fund	Stormwater Drain Trust	Local Option Gas Tax	Peoples Transportation Tax	Federal Forfeiture	State Forfeiture	Hometown District Improvement Trust	Debt Service Fund	
<b>ASSETS:</b>									
Cash and cash equivalents	\$ 647,141	\$ 264,481	\$ 300,830	\$ 1,152,770	\$ 1,938,903	\$ 75,237	\$ -	\$ 821,677	\$ 5,201,039
Receivables	185,639	81,621	-	93,949	-	-	-	264,570	625,779
Due from other funds	-	160,369	11,177	44,594	-	-	9,250	-	225,390
Total assets	\$ 832,780	\$ 506,471	\$ 312,007	\$ 1,291,313	\$ 1,938,903	\$ 75,237	\$ 9,250	\$ 1,086,247	\$ 6,052,008
<b>LIABILITIES:</b>									
Accounts payable	\$ 13,261	\$ 81,172	\$ -	\$ 2,650	\$ 4,162	\$ -	\$ -	\$ -	\$ 101,245
Deferred revenue	25,759	-	-	-	-	-	-	-	25,759
Due to other funds	192,635	-	-	-	22,510	-	-	-	215,145
Total liabilities	231,655	81,172	-	2,650	26,672	-	-	-	342,149
<b>FUND BALANCES:</b>									
Restricted for:									
Debt service	-	-	-	-	-	-	-	1,086,247	1,086,247
Grant projects	601,125	-	-	-	-	-	-	-	601,125
Stormwater management	-	425,299	-	-	-	-	-	-	425,299
Transportation projects	-	-	312,007	1,288,663	-	-	-	-	1,600,670
Law enforcement	-	-	-	-	1,912,231	75,237	-	-	1,987,468
Committed to:									
Parking management	-	-	-	-	-	-	9,250	-	9,250
Total fund balances	601,125	425,299	312,007	1,288,663	1,912,231	75,237	9,250	1,086,247	5,710,059
Total liabilities and fund balances	\$ 832,780	\$ 506,471	\$ 312,007	\$ 1,291,313	\$ 1,938,903	\$ 75,237	\$ 9,250	\$ 1,086,247	\$ 6,052,008



**CITY OF SOUTH MIAMI, FLORIDA**  
**COMBINING STATEMENT OF REVENUES, EXPENDITURES AND CHANGES IN FUND BALANCES**  
**NONMAJOR GOVERNMENTAL FUNDS**  
**For the Year Ended September 30, 2012**

	Special Revenue Funds										Total Nonmajor Governmental Funds	
	Grants Fund	Stormwater Drain Trust	Local Option Gas Tax	Peoples Transportation Tax	Federal Forfeiture	State Forfeiture	Hometown District Improvement Trust	Debt Service Fund				
<b>REVENUES:</b>												
Intergovernmental	\$ 416,041	\$ 404,465	\$ 68,853	\$ 403,874	\$ -	\$ -	\$ -	\$ -	\$ -	\$ -	\$ -	\$ 1,293,233
Utility taxes	-	31,460	-	-	-	-	-	-	-	-	-	31,460
Fines and forfeitures	-	-	-	-	1,756,708	-	-	-	-	-	-	1,756,708
Charges for services	-	-	-	-	-	-	-	-	-	-	-	24,000
Rents and royalties	-	-	-	-	-	-	-	-	-	-	-	750,054
Interest income	5,112	3,505	3,877	11,335	11,090	819	-	311	-	-	-	36,049
Other	-	-	-	-	36,069	12,087	-	142,918	-	-	-	191,074
<b>Total revenues</b>	<b>421,153</b>	<b>439,430</b>	<b>72,730</b>	<b>415,209</b>	<b>1,803,867</b>	<b>12,906</b>	<b>24,000</b>	<b>893,283</b>	<b>-</b>	<b>-</b>	<b>24,000</b>	<b>4,082,578</b>
<b>EXPENDITURES:</b>												
Current:												
General government	82,806	-	-	-	-	-	-	-	-	-	-	82,806
Public safety	-	-	-	-	53,578	3,347	-	-	-	-	-	56,925
Public works	26,775	59,756	-	30,525	-	-	-	-	-	-	-	117,056
Capital outlay	298,332	88,555	141,313	106,823	251,057	-	-	-	-	-	-	886,080
Debt service:												
Principal	-	50,136	-	-	-	-	-	-	-	-	-	-
Interest and fiscal charges	-	2,973	-	-	-	-	-	-	-	-	-	248,273
<b>Total expenditures</b>	<b>407,913</b>	<b>201,420</b>	<b>141,313</b>	<b>137,348</b>	<b>304,635</b>	<b>3,347</b>	<b>-</b>	<b>768,578</b>	<b>-</b>	<b>-</b>	<b>-</b>	<b>1,964,554</b>
Excess (deficiency) of revenues over expenditures	13,240	238,010	(68,583)	277,861	1,499,232	9,559	24,000	124,705	-	-	-	2,118,024
<b>OTHER FINANCING SOURCES (USES):</b>												
Transfers in	-	-	-	-	-	-	-	-	-	-	-	682,550
Transfers out	-	(250,000)	-	-	-	-	(25,000)	-	-	-	-	(275,000)
<b>Total other financing sources (uses)</b>	<b>-</b>	<b>(250,000)</b>	<b>-</b>	<b>-</b>	<b>-</b>	<b>-</b>	<b>(25,000)</b>	<b>682,550</b>	<b>-</b>	<b>-</b>	<b>-</b>	<b>407,550</b>
Net change in fund balances	13,240	(11,990)	(68,583)	277,861	1,499,232	9,559	(1,000)	807,255	-	-	(1,000)	2,525,574
<b>FUND BALANCES, beginning</b>	<b>587,885</b>	<b>437,289</b>	<b>380,590</b>	<b>1,010,802</b>	<b>412,999</b>	<b>65,678</b>	<b>10,250</b>	<b>278,992</b>	<b>-</b>	<b>-</b>	<b>10,250</b>	<b>3,184,485</b>
<b>FUND BALANCES, ending</b>	<b>\$ 601,125</b>	<b>\$ 425,299</b>	<b>\$ 312,007</b>	<b>\$ 1,288,663</b>	<b>\$ 1,912,231</b>	<b>\$ 75,237</b>	<b>\$ 9,250</b>	<b>\$ 1,086,247</b>	<b>\$ -</b>	<b>\$ -</b>	<b>\$ 9,250</b>	<b>\$ 5,710,059</b>

**CITY OF SOUTH MIAMI, FLORIDA**  
**SCHEDULES OF REVENUES, EXPENDITURES**  
**AND CHANGES IN FUND BALANCE - BUDGET AND ACTUAL**  
**NONMAJOR GOVERNMENTAL FUNDS**  
**For the Year Ended September 30, 2012**

	Emergency Reserve Fund			Local Option Gas Tax Fund		
	Original and Final Budget	Actual	Variance with Final Budget	Original and Final Budget	Actual	Variance with Final Budget
<b>REVENUES:</b>						
Intergovernmental	\$ -	\$ -	\$ -	\$ 64,770	\$ 68,853	\$ 4,083
Interest income	16,150	19,571	3,421	2,000	3,877	1,877
<b>Total revenues</b>	<b>16,150</b>	<b>19,571</b>	<b>3,421</b>	<b>66,770</b>	<b>72,730</b>	<b>5,960</b>
<b>EXPENDITURES:</b>						
Current:						
Capital outlay	-	-	-	185,000	98,489	86,511
<b>Total expenditures</b>	<b>-</b>	<b>-</b>	<b>-</b>	<b>185,000</b>	<b>98,489</b>	<b>86,511</b>
Excess (deficiency) of revenues over expenditures	16,150	19,571	3,421	(118,230)	(25,759)	92,471
<b>OTHER FINANCING USES:</b>						
Transfer out	(116,253)	(116,253)	-	-	-	-
<b>Net change in fund balance</b>	<b><u>(100,103)</u></b>	<b><u>(96,682)</u></b>	<b><u>3,421</u></b>	<b><u>(118,230)</u></b>	<b><u>(25,759)</u></b>	<b><u>92,471</u></b>

**CITY OF SOUTH MIAMI, FLORIDA**  
**SCHEDULES OF REVENUES, EXPENDITURES**  
**AND CHANGES IN FUND BALANCE - BUDGET AND ACTUAL**  
**NONMAJOR GOVERNMENTAL FUNDS**  
(continued)  
For the Year Ended September 30, 2012

	Peoples Transportation Tax Fund			Federal Forfeiture Fund			
	Original and Final Budget	Actual	Variance with Final Budget	Original Budget	Final Budget	Actual	Variance with Final Budget
<b>REVENUES:</b>							
Intergovernmental	\$ 300,000	\$ 403,874	\$ 103,874	\$ -	\$ -	\$ -	\$ -
Utility taxes	-	-	-	-	-	-	-
Fines and forfeitures	-	-	-	-	-	1,756,708	1,756,708
Charges for services	-	-	-	-	-	-	-
Interest income	-	11,335	11,335	200	200	11,090	10,890
Other	-	-	-	-	-	36,069	36,069
<b>Total revenues</b>	<b>300,000</b>	<b>415,209</b>	<b>115,209</b>	<b>200</b>	<b>200</b>	<b>1,803,867</b>	<b>1,803,667</b>
<b>EXPENDITURES:</b>							
Current:							
Public works	-	-	-	-	-	-	-
Public safety	-	-	-	49,448	54,326	53,578	748
Capital outlay	707,750	97,115	610,635	210,000	265,922	251,057	14,865
Debt service:							
Principal	-	-	-	-	-	-	-
Interest and fiscal charges	-	-	-	-	-	-	-
<b>Total expenditures</b>	<b>707,750</b>	<b>97,115</b>	<b>610,635</b>	<b>259,448</b>	<b>320,248</b>	<b>304,635</b>	<b>15,613</b>
Excess (deficiency) of revenues over expenditures	(407,750)	318,094	725,844	(259,248)	(320,048)	1,499,232	1,819,280
<b>OTHER FINANCING USES:</b>							
Transfer out	-	-	-	-	-	-	-
<b>Net change in fund balance</b>	<b>\$ (407,750)</b>	<b>\$ 318,094</b>	<b>\$ 725,844</b>	<b>\$ (259,248)</b>	<b>\$ (320,048)</b>	<b>\$ 1,499,232</b>	<b>\$ 1,819,280</b>

State Forfeiture Fund			Hometown District Improvement Trust Fund			Stormwater Drain Trust Fund		
Original and Final Budget	Actual	Variance with Final Budget	Original and Final Budget	Actual	Variance with Final Budget	Original and Final Budget	Actual	Variance with Final Budget
\$ -	\$ -	\$ -	\$ -	\$ -	\$ -	\$ 350,000	\$ 404,465	\$ 54,465
-	-	-	-	-	-	18,900	31,460	12,560
-	-	-	-	-	-	-	-	-
-	-	-	28,000	24,000	(4,000)	-	-	-
500	819	319	55	-	(55)	7,500	3,505	(3,995)
-	12,087	12,087	-	-	-	-	-	-
<u>500</u>	<u>12,906</u>	<u>12,406</u>	<u>28,055</u>	<u>24,000</u>	<u>(4,055)</u>	<u>376,400</u>	<u>439,430</u>	<u>63,030</u>
-	-	-	-	-	-	60,768	59,756	1,012
12,000	3,347	8,653	-	-	-	-	-	-
-	-	-	-	-	-	203,845	169,266	34,579
-	-	-	-	-	-	50,136	50,136	-
-	-	-	-	-	-	4,034	2,973	1,061
<u>12,000</u>	<u>3,347</u>	<u>8,653</u>	<u>-</u>	<u>-</u>	<u>-</u>	<u>318,783</u>	<u>282,131</u>	<u>36,652</u>
<u>(11,500)</u>	<u>9,559</u>	<u>21,059</u>	<u>28,055</u>	<u>24,000</u>	<u>(4,055)</u>	<u>57,617</u>	<u>157,299</u>	<u>99,682</u>
-	-	-	(25,000)	(25,000)	-	(250,000)	(250,000)	-
<u>\$ (11,500)</u>	<u>\$ 9,559</u>	<u>\$ 21,059</u>	<u>\$ 3,055</u>	<u>\$ (1,000)</u>	<u>\$ (4,055)</u>	<u>\$ (192,383)</u>	<u>\$ (92,701)</u>	<u>\$ 99,682</u>

**CITY OF SOUTH MIAMI, FLORIDA**  
**SCHEDULE OF REVENUES, EXPENDITURES AND CHANGE IN FUND BALANCE**  
**BUDGET AND ACTUAL - CAPITAL IMPROVEMENTS PROGRAM FUND**  
 For the Year Ended September 30, 2012

	<u>Original and Final Budget</u>	<u>Actual Amounts</u>	<u>Variance with Final Budget</u>
REVENUES:	\$ <u>-</u>	\$ <u>-</u>	\$ <u>-</u>
EXPENDITURES:			
Current:			
Capital outlay	<u>926,582</u>	<u>866,831</u>	<u>59,751</u>
Total expenditures	<u>926,582</u>	<u>866,831</u>	<u>59,751</u>
Excess (deficiency) of revenues over expenditures	<u>(926,582)</u>	<u>(866,831)</u>	<u>59,751</u>
OTHER FINANCING SOURCES:			
Transfers in	<u>1,376,582</u>	<u>1,376,582</u>	<u>-</u>
Net change in fund balance	<u>\$ 450,000</u>	<u>\$ 509,751</u>	<u>\$ 59,751</u>

**CITY OF SOUTH MIAMI, FLORIDA**  
**SCHEDULE OF REVENUES, EXPENDITURES AND CHANGE IN FUND BALANCE**  
**BUDGET AND ACTUAL - DEBT SERVICE FUND**  
For the Year Ended September 30, 2012

	<u>Original Budget</u>	<u>Final Budget</u>	<u>Actual Amounts</u>	<u>Variance with Final Budget</u>
<b>REVENUES:</b>				
Rents and royalties	\$ 728,104	\$ 728,104	\$ 750,054	\$ 21,950
Interest income	-	-	311	311
Other	<u>142,918</u>	<u>142,918</u>	<u>142,918</u>	<u>-</u>
Total revenues	<u>871,022</u>	<u>871,022</u>	<u>893,283</u>	<u>22,261</u>
<b>EXPENDITURES:</b>				
Debt service:				
Principal	246,432	242,489	198,137	44,352
Interest and fiscal charges	<u>391,294</u>	<u>570,441</u>	<u>570,441</u>	<u>-</u>
Total expenditures	<u>637,726</u>	<u>812,930</u>	<u>768,578</u>	<u>44,352</u>
Excess of revenues over expenditures	<u>233,296</u>	<u>58,092</u>	<u>124,705</u>	<u>66,613</u>
<b>OTHER FINANCING SOURCES:</b>				
Transfer in	<u>682,550</u>	<u>682,550</u>	<u>682,550</u>	<u>-</u>
Net change in fund balance	<u>\$ 915,846</u>	<u>\$ 740,642</u>	<u>\$ 807,255</u>	<u>\$ 66,613</u>

## TRUST AND AGENCY FUNDS

These funds account for assets held by the City in a trustee capacity or as an agent for employees, other governments and/or other funds.

### **Pension Trust Funds**

General Employees' Pension Plan - This fund is used to account for the accumulation of resources for pension benefit payments to qualified City employees.

Police Officers' Pension Plan - This fund is used to account for the accumulation of resources for pension benefit payments to qualified public safety employees.

Section 185 Police Officers Pension Trust Fund - This fund is used to account for the accumulation of resources, under Chapter 185 of the Florida Statutes, for pension benefit payments to qualified public safety employees.

CITY OF SOUTH MIAMI, FLORIDA  
 COMBINING STATEMENT OF NET ASSETS  
 FIDUCIARY FUNDS  
 September 30, 2012

	<u>General Employees Pension Plan</u>	<u>Police Officers Pension Plan</u>	<u>Section 185 Police Officers Pension Trust Fund</u>	<u>Total</u>
<b>ASSETS:</b>				
Cash and cash equivalents	\$ 231,476	\$ 284,731	\$ 51,771	\$ 567,978
Investments, at fair value:				
U.S. Government securities	852,698	1,048,879	296,814	2,198,391
Corporate obligations	822,471	1,011,698	143,942	1,978,111
Common stocks	2,968,783	3,651,814	467,266	7,087,863
International equity	137,242	168,818	-	306,060
Mutual funds	6,124,102	7,533,082	-	13,657,184
	<u>11,136,772</u>	<u>13,699,022</u>	<u>959,793</u>	<u>25,795,587</u>
Total cash, cash equivalents and investments				
Receivables:				
Employer contribution	76,603	130,050	-	206,653
Employee contribution	8,043	16,008	-	24,051
Dividends and interest	14,791	18,193	-	32,984
Section 185 contribution	-	75,560	84,837	160,397
	<u>99,437</u>	<u>239,811</u>	<u>84,837</u>	<u>424,085</u>
Total receivables				
Other assets:				
Prepaid expenses	957	1,177	-	2,134
	<u>11,237,166</u>	<u>13,940,010</u>	<u>1,044,630</u>	<u>26,221,806</u>
Total assets				
<b>LIABILITIES:</b>				
Accounts payable	17,923	22,042	307,064	347,029
Minimum funding liability	-	-	75,560	75,560
Reserve for future benefits	-	-	52,579	52,579
	<u>17,923</u>	<u>22,042</u>	<u>435,203</u>	<u>475,168</u>
Total liabilities				
<b>NET ASSETS:</b>				
Held in trust for employees' pension benefits	\$ <u>11,219,243</u>	\$ <u>13,917,968</u>	\$ <u>609,427</u>	\$ <u>25,746,638</u>



**CITY OF SOUTH MIAMI, FLORIDA**  
**COMBINING STATEMENT OF CHANGES IN NET ASSETS**  
**FIDUCIARY FUNDS**  
For the Year Ended September 30, 2012

	General Employees Pension Plan	Police Officers Pension Plan	Section 185 Police Officers Pension Trust Fund	Total
	<u>                    </u>	<u>                    </u>	<u>                    </u>	<u>                    </u>
<b>ADDITIONS:</b>				
Contributions:				
Employer	\$ 414,833	\$ 569,362	\$ -	\$ 984,195
Employees	323,417	477,432	-	800,849
Section 185 contributions	-	37,780	84,837	122,617
	<u>738,250</u>	<u>1,084,574</u>	<u>84,837</u>	<u>1,907,661</u>
Total contributions				
Investment income:				
Net appreciation in fair value of investments	1,502,949	1,804,611	128,820	3,436,380
Interest and dividends	190,053	228,200	19,855	438,108
	<u>1,693,002</u>	<u>2,032,811</u>	<u>148,675</u>	<u>3,874,488</u>
Total investment income				
Less investment expenses	61,495	73,838	14,805	150,138
	<u>1,631,507</u>	<u>1,958,973</u>	<u>133,870</u>	<u>3,724,350</u>
Net investment income				
Total additions	<u>2,369,757</u>	<u>3,043,547</u>	<u>218,707</u>	<u>5,632,011</u>
DEDUCTIONS:				
Benefits paid	572,270	529,686	32,895	1,134,851
Refunds of contributions	461,618	16,124	-	477,742
Administrative expenses	62,906	75,533	26,631	165,070
Minimum benefit funding payment	-	-	37,780	37,780
	<u>1,096,794</u>	<u>621,343</u>	<u>97,306</u>	<u>1,815,443</u>
Total deductions				
Change in net assets	1,272,963	2,422,204	121,401	3,816,568
NET ASSETS, beginning of year	<u>9,946,280</u>	<u>11,495,764</u>	<u>488,026</u>	<u>21,930,070</u>
NET ASSETS, end of year	<u>\$ 11,219,243</u>	<u>\$ 13,917,968</u>	<u>\$ 609,427</u>	<u>\$ 25,746,638</u>

# STATISTICAL SECTION

## STATISTICAL SECTION

This part of the City of South Miami, Florida's comprehensive annual financial report presents detailed information as a context for understanding what the information in the financial statements, note disclosures, and required supplementary information says about the City's overall financial health.

<u>CONTENTS</u>	<u>PAGE</u>
<b>Financial Trends</b> These schedules contain trend information to help the reader understand how the City's financial performance and well-being have changed over time.	67-70
<b>Revenue Capacity</b> These schedules contain information to help the reader assess the City's most significant local revenue source, the property tax.	71-74
<b>Debt Capacity</b> These schedules present information to help the reader assess the affordability of the City's current levels of outstanding debt and the City's ability to issue additional debt in the future.	75-78
<b>Demographic and Economic Information</b> These schedules offer demographic and economic indicators to help the reader understand the environment within which the City's financial activities take place.	79-80
<b>Operating Information</b> These schedules contain service and infrastructure data to help the reader understand how the information in the City's financial report relates to the services the City provides and the activities it performs.	81-83

*Sources: Unless otherwise noted, the information in these schedules is derived from the comprehensive annual financial reports for the relevant year.*

**CITY OF SOUTH MIAMI, FLORIDA**  
**NET ASSETS BY COMPONENT**  
**LAST TEN FISCAL YEARS**  
**(ACCRUAL BASIS OF ACCOUNTING)**  
(amounts expressed in thousands)

Table 1

	Fiscal Year									
	2003	2004	2005	2006	2007	2008	2009	2010	2011	2012
<b>GOVERNMENTAL ACTIVITIES:</b>										
Invested in capital assets, net of related debt	\$ 6,983	\$ 9,139	\$ 10,604	\$ 14,302	\$ 16,694	\$ 21,871	\$ 23,894	\$ 23,497	\$ 23,767	\$ 24,318
Restricted	7,817	6,849	6,255	4,165	4,304	4,249	4,692	4,589	4,680	6,719
Unrestricted	2,081	4,117	5,492	7,661	10,003	9,167	8,931	7,011	8,324	7,956
<b>Total governmental activities net assets</b>	<b>\$ 16,881</b>	<b>\$ 20,105</b>	<b>\$ 22,351</b>	<b>\$ 26,128</b>	<b>\$ 31,001</b>	<b>\$ 35,287</b>	<b>\$ 37,517</b>	<b>\$ 35,097</b>	<b>\$ 36,771</b>	<b>\$ 38,993</b>

Table 2

**CITY OF SOUTH MIAMI, FLORIDA**  
**CHANGES IN NET ASSETS**  
**LAST TEN FISCAL YEARS**  
**(ACCRUAL BASIS OF ACCOUNTING)**  
(amounts expressed in thousands)

	Fiscal Year									
	2003	2004	2005	2006	2007	2008	2009	2010	2011	2012
<b>EXPENSES:</b>										
Governmental activities:										
General government	\$ 4,847	\$ 4,919	\$ 5,828	\$ 5,868	\$ 6,970	\$ 8,155	\$ 8,413	\$ 7,304	\$ 3,912	\$ 3,598
Public safety	4,990	4,446	4,386	4,280	4,554	4,410	4,523	4,717	7,542	7,483
Public works	2,821	3,541	5,258	5,909	5,014	4,535	4,342	4,683	4,337	4,747
Community services	-	-	-	-	-	-	-	484	1,098	1,284
Culture and recreation	1,399	1,222	1,231	1,366	861	1,021	1,037	1,069	1,140	1,084
Interest on long-term debt	380	416	531	613	487	676	960	1,055	929	946
Total governmental activities expenses	14,437	14,544	17,234	18,036	17,886	18,797	19,275	19,312	18,958	19,142
<b>PROGRAM REVENUES:</b>										
Governmental activities:										
Charges for services:										
General government	1,831	3,312	3,336	3,036	2,200	3,952	3,584	3,453	371	287
Public safety	2,513	404	304	748	457	459	407	476	4,608	5,917
Public works	346	372	326	316	343	399	466	408	574	525
Community services	-	-	-	-	-	-	-	-	34	31
Culture and recreation	105	272	279	161	182	1,229	296	242	199	234
Interest on long-term debt	-	-	-	-	-	-	-	493	244	446
Operating and capital grants and contributions	4,194	1,856	3,931	4,526	4,458	3,288	2,266	718	1,159	541
Total governmental activities program revenues	8,989	6,216	8,176	8,787	7,640	9,327	7,019	5,790	7,189	7,981
Net (expense)/revenue: Governmental activities	(5,448)	(8,328)	(9,058)	(9,249)	(10,246)	(9,470)	(12,256)	(13,522)	(11,769)	(11,161)
<b>GENERAL REVENUES AND OTHER CHANGES IN NET ASSETS:</b>										
Governmental activities:										
Taxes:										
Property taxes	4,817	6,632	7,238	8,170	8,876	8,104	9,051	7,685	7,114	6,708
Utility taxes	1,718	1,645	1,633	1,776	1,829	1,965	2,092	2,087	2,070	2,052
Business taxes	-	-	-	-	553	552	581	630	606	641
Franchise taxes	730	815	813	1,008	1,116	1,116	1,197	1,101	1,066	1,048
Service concession arrangement	-	-	-	-	-	-	-	335	359	370
Intergovernmental (unrestricted)	2,427	1,992	1,245	1,310	1,297	1,282	1,200	2,051	1,980	2,198
Interest income (unrestricted)	158	249	375	594	809	396	226	218	140	181
Other	-	-	-	168	524	341	139	110	108	185
Total governmental activities	9,850	11,333	11,304	13,026	15,004	13,756	14,486	14,217	13,443	13,383
<b>CHANGES IN NET ASSETS:</b>										
Governmental activities	\$ 4,402	\$ 3,005	\$ 2,246	\$ 3,777	\$ 4,758	\$ 4,286	\$ 2,230	\$ 695	\$ 1,674	\$ 2,222

Table 3

**CITY OF SOUTH MIAMI, FLORIDA**  
**FUND BALANCES OF GOVERNMENTAL FUNDS**  
**LAST TEN FISCAL YEARS**  
**(MODIFIED ACCRUAL BASIS OF ACCOUNTING)**  
(amounts expressed in thousands)

	2003	2004	2005	2006	2007	2008	2009	2010	2011	2012
<b>General Fund:</b>										
Reserved	\$ 6,558	\$ 6,258	\$ 6,288	\$ 5,130	\$ 5,720	\$ 6,476	\$ 4,462	\$ 2,160	\$ -	\$ -
Unreserved	3,088	3,825	4,319	4,796	5,268	3,523	6,251	6,325	-	-
Nondisposable	-	-	-	-	-	-	-	-	186	204
Committed	-	-	-	-	-	-	-	-	1,785	1,689
Assigned	-	-	-	-	-	-	-	-	1,982	622
Unassigned	-	-	-	-	-	-	-	-	5,546	6,144
<b>Total General Fund</b>	<b>\$ 9,646</b>	<b>\$ 10,083</b>	<b>\$ 10,607</b>	<b>\$ 9,926</b>	<b>\$ 10,988</b>	<b>\$ 9,999</b>	<b>\$ 10,713</b>	<b>\$ 8,485</b>	<b>\$ 9,499</b>	<b>\$ 8,659</b>
<b>All other governmental funds:</b>										
Reserved	\$ 1,358	\$ 1,494	\$ 1,705	\$ 1,854	\$ 1,986	\$ 2,313	\$ 1,921	\$ 215	\$ -	\$ -
Unreserved, reported in:										
Special Revenue Funds	130	607	579	750	2,612	2,460	2,472	4,075	-	-
Nondisposable	-	-	-	-	-	-	-	-	4	-
Restricted	-	-	-	-	-	-	-	-	4,676	6,720
Committed	-	-	-	-	-	-	-	-	10	9
Assigned	-	-	-	-	-	-	-	-	-	510
<b>Total all other governmental funds</b>	<b>\$ 1,488</b>	<b>\$ 2,101</b>	<b>\$ 2,284</b>	<b>\$ 2,604</b>	<b>\$ 4,598</b>	<b>\$ 4,773</b>	<b>\$ 4,393</b>	<b>\$ 4,290</b>	<b>\$ 4,690</b>	<b>\$ 7,239</b>

Note: Information for fiscal years 2003 through 2010 have not been restated for Governmental Accounting Standards Board (GASB) Statement No. 54 classifications.

**CITY OF SOUTH MIAMI, FLORIDA**  
**CHANGES IN FUND BALANCES OF GOVERNMENTAL FUNDS**  
**LAST TEN FISCAL YEARS**  
**(MODIFIED ACCRUAL BASIS OF ACCOUNTING)**  
(amounts expressed in thousands)

	2003	2004	2005	2006	2007	2008	2009	2010	2011	2012
<b>REVENUES:</b>										
Taxes and franchise fees	\$ 5,547	\$ 7,423	\$ 8,050	\$ 9,178	\$ 9,992	\$ 9,772	\$ 10,829	\$ 9,416	\$ 8,787	\$ 8,397
Charges for services	2,276	2,332	2,352	2,532	2,197	2,818	3,063	3,175	3,968	4,089
Utility taxes	1,718	1,669	1,634	1,776	1,829	1,965	2,092	2,087	2,070	2,052
Intergovernmental	2,427	1,992	5,176	5,686	5,593	4,419	3,315	2,471	3,091	2,614
Licenses and permits	1,163	1,285	1,101	1,202	1,102	1,137	495	470	964	667
Fines and forfeitures	763	355	304	442	349	330	326	415	483	1,944
Interest income	158	248	375	594	809	396	226	219	140	181
Rents and royalties	-	-	-	-	-	-	-	1,129	1,007	1,026
Grants	3,964	1,856	-	-	-	-	-	-	-	-
Other	824	389	488	403	774	2,246	1,159	268	495	439
<b>Total revenues</b>	<b>18,840</b>	<b>17,549</b>	<b>19,480</b>	<b>21,813</b>	<b>22,645</b>	<b>23,083</b>	<b>21,505</b>	<b>19,650</b>	<b>21,005</b>	<b>21,409</b>
<b>EXPENDITURES:</b>										
General government	4,768	3,598	5,648	5,745	6,660	7,238	6,759	6,709	3,217	2,838
Public safety	4,877	4,281	4,270	4,194	4,253	4,333	4,358	4,572	7,242	7,071
Public works	2,490	3,116	4,660	5,409	5,109	5,284	5,100	4,329	4,148	3,822
Community services	-	-	-	-	-	-	-	484	1,065	1,232
Culture and recreation	1,297	1,176	1,199	1,339	837	977	979	1,035	1,089	1,034
Nondepartmental	-	1,138	-	-	-	-	-	-	-	-
Debt service:										
Principal	326	533	391	612	2,183	2,444	1,284	1,038	2,599	802
Interest and fiscal charges	382	418	538	614	614	920	909	887	1,167	660
Capital outlay	4,965	2,363	3,032	7,538	8,827	4,654	2,320	1,412	1,100	2,241
<b>Total expenditures</b>	<b>19,105</b>	<b>16,623</b>	<b>19,738</b>	<b>25,451</b>	<b>28,483</b>	<b>25,850</b>	<b>21,709</b>	<b>20,466</b>	<b>21,627</b>	<b>19,700</b>
Excess (deficiency) of revenues over expenditures	(265)	926	(258)	(3,638)	(5,838)	(2,767)	(204)	(816)	(622)	1,709
<b>OTHER FINANCING SOURCES (USES):</b>										
Transfers in	6,858	-	-	-	-	-	641	485	820	2,359
Transfers out	(419)	-	-	-	-	-	(641)	(485)	(820)	(2,359)
Issuance of debt	20	547	961	3,277	8,679	1,953	538	228	748	-
Proceeds from refunding debt	-	-	-	-	-	-	-	-	7,575	-
Payment to bond escrow agent	-	-	-	-	-	-	-	-	(6,287)	-
<b>Total other financing sources (uses)</b>	<b>6,459</b>	<b>547</b>	<b>961</b>	<b>3,277</b>	<b>8,679</b>	<b>1,953</b>	<b>538</b>	<b>228</b>	<b>2,036</b>	<b>-</b>
<b>Net change in fund balances</b>	<b>\$ 6,194</b>	<b>\$ 1,473</b>	<b>\$ 703</b>	<b>\$ (361)</b>	<b>\$ 2,841</b>	<b>\$ (814)</b>	<b>\$ 334</b>	<b>\$ (588)</b>	<b>\$ 1,414</b>	<b>\$ 1,709</b>
Debt service as a percentage of noncapital expenditures	5.0%	6.7%	5.6%	6.8%	14.2%	15.9%	11.8%	10.0%	18.3%	7.9%

**CITY OF SOUTH MIAMI, FLORIDA**  
**ASSESSED VALUE AND ESTIMATED ACTUAL VALUE OF TAXABLE PROPERTY**  
**LAST TEN FISCAL YEARS**  
(amounts expressed in thousands)

Table 5

Fiscal Year (2)	Real Property	Personal Property	Net Assessed Value	Total Direct Tax Rate	Estimated Actual Value	Net Assessed Value as a Percentage of Estimated Actual Value (1)
2003	\$ 798,292	\$ 81,734	\$ 880,026	7.3730	\$ 880,026	100.00%
2004	\$ 919,791	\$ 83,712	\$ 1,003,503	7.2130	\$ 1,003,503	100.00%
2005	\$ 1,125,391	\$ 86,708	\$ 1,212,099	6.6810	\$ 1,212,099	100.00%
2006	\$ 1,363,371	\$ 82,658	\$ 1,446,029	5.8810	\$ 1,446,029	100.00%
2007	\$ 1,578,948	\$ 86,150	\$ 1,665,098	4.8180	\$ 1,665,098	100.00%
2008	\$ 1,621,815	\$ 69,137	\$ 1,690,952	5.2790	\$ 1,690,952	100.00%
2009	\$ 1,455,867	\$ 78,411	\$ 1,534,278	4.9526	\$ 1,534,278	100.00%
2010	\$ 1,350,917	\$ 71,712	\$ 1,422,629	4.9526	\$ 1,422,629	100.00%
2011	\$ 1,347,024	\$ 66,751	\$ 1,413,775	4.6662	\$ 1,413,775	100.00%
2012	\$ 1,362,014	\$ 64,823	\$ 1,426,837	4.3639	\$ 1,426,837	100.00%

Note: Property in the City is reassessed each year at actual value.  
Tax rates are \$ 1,000 of assessed value.

(1) Includes tax exempt property.

(2) Year of levy.

Source: Miami-Dade County Department of Property Appraisal - DR-420.



**CITY OF SOUTH MIAMI, FLORIDA**  
**PROPERTY TAX RATES**  
**DIRECT AND OVERLAPPING GOVERNMENTS**  
**LAST TEN FISCAL YEARS**

Table 6

Fiscal Year (2)	City of South Miami										Overlapping Rates (1)										Total City-Wide
	School Millages					Regional Millages					County Wide Millages					Other					
	Basic Direct Rate	Debt Service Rate	MDC School Board - Operating	MDC School Board - Debt Service	MDC	Everglades Project	South Florida Water Management District	Florida Inland Navigation District	County Wide - Operating	County Wide - Debt Service	County	Fire & Rescue - Operating	Fire & Rescue - Debt Service	MDC Library District	Childrens Trust Authority	MDC	Library District	Trust Authority			
2003	7.3730	-	8.4180	0.6820	0.1000	0.5970	0.0385	5.9690	0.2850	0.0790	2.5820	0.4860	0.5000	0.4860	0.5000	0.4860	0.4860	0.5000	27.1095		
2004	7.2130	-	8.0900	0.5970	0.1000	0.5970	0.0385	5.9350	0.2850	0.0690	2.5920	0.4860	0.4442	0.4860	0.4442	0.4860	0.4860	0.4442	26.4467		
2005	6.6810	-	7.9470	0.4910	0.1000	0.5970	0.0385	5.8350	0.2850	0.0520	2.6090	0.4860	0.4288	0.4860	0.4288	0.4860	0.4860	0.4288	25.5503		
2006	5.8810	-	7.6910	0.4140	0.1000	0.5970	0.0385	5.6150	0.2850	0.0420	2.6090	0.4860	0.4223	0.4860	0.4223	0.4860	0.4860	0.4223	24.1808		
2007	4.8180	-	7.5700	0.3780	0.0894	0.5346	0.0345	4.5796	0.2850	0.0420	2.2067	0.3842	0.4223	0.3842	0.4223	0.3842	0.3842	0.4223	21.3443		
2008	5.2790	-	7.5330	0.2640	0.0894	0.5346	0.0345	4.8379	0.2850	0.0420	2.1851	0.3822	0.4212	0.3822	0.4212	0.3822	0.3822	0.4212	21.8879		
2009	4.9526	-	7.6980	0.2970	0.0894	0.5346	0.0345	4.8379	0.2850	0.0420	2.1851	0.3822	0.5000	0.3822	0.5000	0.3822	0.3822	0.5000	21.8383		
2010	4.9526	-	7.8640	0.3850	0.0894	0.5346	0.0345	5.4275	0.4450	0.0200	2.5753	0.2840	0.5000	0.2840	0.5000	0.2840	0.2840	0.5000	23.1119		
2011	4.6662	-	7.7650	0.2400	0.0624	0.3739	0.0345	4.8050	0.2850	0.0131	2.4496	0.1795	0.5000	0.1795	0.5000	0.1795	0.1795	0.5000	21.3742		
2012	4.3639	-	7.7650	0.2330	0.0613	0.3676	0.0345	4.7035	0.2850	0.0131	2.4496	0.1725	0.5000	0.1725	0.5000	0.1725	0.1725	0.5000	20.9490		

(1) Overlapping rates are those of local and county governments that apply to property owners within the City of South Miami.

(2) Year of levy.

Additional information:

- Property tax rates are assessed per \$ 1,000 of taxable assessed valuation.
- *City property tax rates above (all inclusive) do not have a debt service millage component.*
- *MDC - Miami Dade County*

Tax rate limits:

- City 10.000 mills
- County 10.000 mills
- SFWM\* 10.000 mills

Source: Miami-Dade County Department of Property Appraisal

\* South Florida Water Management District

**CITY OF SOUTH MIAMI, FLORIDA**  
**PRINCIPAL PROPERTY TAXPAYERS**  
**CURRENT YEAR AND NINE YEARS AGO**  
(amounts expressed in thousands)

Table 7

2012		2003		Percentage Total	
Taxpayer	Assessed Valuation	Rank	Assessed Valuation	Rank	Percentage Total Assessed Valuation
Bakery Associates, Ltd.	\$ 89,200	1	\$ 110,000	1	12.5%
RRC 57th Avenue LLC	36,000	2	10,971	2	1.2%
S. Miami Hospital Dev Fund Inc.	19,585	3	10,837	3	1.2%
South Miami Corp.	18,900	4	7,500	4	0.9%
JW Advance LLC	17,848	5	7,277	5	0.8%
Kimco South Miami 634 Inc.	14,200	6	6,864	6	0.8%
Larkin Community Hospital, Inc.	13,709	7	6,270	7	0.7%
Capstone Capital Trust, Inc.	13,100	8	5,880	8	0.7%
Promed Sunset LLC	12,267	9	5,300	9	0.6%
Valencia South Miami LLC	12,076	10	4,126	10	0.5%
	<u>\$ 246,885</u>		<u>\$ 175,025</u>		<u>19.9%</u>

Source: Miami-Dade County Tax Assessors' Office 2012 & 2003 Tax Rolls

**CITY OF SOUTH MIAMI, FLORIDA**  
**PROPERTY TAX LEVIES AND COLLECTIONS**  
**LAST TEN FISCAL YEARS**  
(amounts expressed in thousands)

Table 8

Fiscal Year Ended September 30,	Total Taxes Levied For Fiscal Year	Collected within the Fiscal Year of Levy		Collections in Subsequent Years	Total Collections to Date	
		Amount	Percent of Levy		Amount	Percent of Levy
2003	\$ 5,259	\$ 4,737	90.1%	\$ 76	\$ 4,813	91.5%
2004	\$ 6,489	\$ 5,718	88.1%	\$ 174	\$ 5,892	90.8%
2005	\$ 7,033	\$ 6,402	91.0%	\$ 49	\$ 6,451	91.7%
2006	\$ 7,936	\$ 6,886	86.8%	\$ 64	\$ 6,950	87.6%
2007	\$ 8,367	\$ 7,185	85.9%	\$ 92	\$ 7,277	87.0%
2008	\$ 7,764	\$ 6,582	84.8%	\$ 42	\$ 6,624	85.3%
2009	\$ 8,616	\$ 7,535	87.5%	\$ 54	\$ 7,589	88.1%
2010	\$ 7,119	\$ 6,763	95.0%	\$ 45	\$ 6,808	95.6%
2011	\$ 6,628	\$ 6,402	96.6%	\$ 53	\$ 6,455	97.4%
2012	\$ 6,236	\$ 6,108	97.9%	\$ -	\$ 6,108	97.9%

Source: Miami-Dade County Tax Collector's Office

Note: Total adjusted tax levy is based on final assessed property values by Miami-Dade County Department of Property Appraisals Office after the Property Appraisals Adjustment Board has completed hearings on the tax roll; and before discounts.

Discounts allowed:

November	4%
December	3%
January	2%
February	1%
April	Taxes delinquent

CITY OF SOUTH MIAMI, FLORIDA  
RATIOS OF OUTSTANDING DEBT BY TYPE  
LAST TEN FISCAL YEARS  
(amounts expressed in thousands)

Table 9

Fiscal Year	Governmental Activities			Total Primary Government	Percentage of Personal Income (1)	Per Capita (1)
	Revenue Bonds	Notes Payable	Capital Leases			
2003	\$ 8,555	\$ 99	\$ 319	\$ 8,973	14.32%	\$ 0.8354
2004	\$ 8,415	\$ 139	\$ 503	\$ 9,057	13.98%	\$ 0.8418
2005	\$ 8,270	\$ 863	\$ 511	\$ 9,644	13.68%	\$ 0.8956
2006	\$ 8,115	\$ 3,432	\$ 608	\$ 12,155	16.31%	\$ 1.1161
2007	\$ 16,133	\$ 1,850	\$ 645	\$ 18,628	23.25%	\$ 1.7694
2008	\$ 15,727	\$ 2,039	\$ 526	\$ 18,292	21.27%	\$ 1.6357
2009	\$ 15,303	\$ 2,116	\$ 212	\$ 17,631	20.51%	\$ 1.6512
2010	\$ 14,847	\$ 1,658	\$ 316	\$ 16,821	18.91%	\$ 1.5753
2011	\$ 14,896	\$ 1,135	\$ 227	\$ 16,258	17.88%	\$ 1.3947
2012	\$ 14,524	\$ 840	\$ 141	\$ 15,505	15.99%	\$ 1.1421

Note: Details regarding the City's outstanding debt can be found in the notes to the financial statements.

(1) See Table 13 - Demographic and Economic Statistics.

**CITY OF SOUTH MIAMI, FLORIDA**  
**RATIOS OF GENERAL BONDED DEBT OUTSTANDING**  
**LAST TEN FISCAL YEARS**  
(amounts expressed in thousands)

Table 10

Fiscal Year	Revenue Bonds	Less: Amounts Available in Debt Service Reserves	Total	Percentage of Estimated Actual Taxable Value of Property (1)	Per Capita (2)
2003	\$ 8,555	\$ 140	\$ 8,415	0.96%	\$ 0.783
2004	\$ 8,415	\$ 150	\$ 8,265	0.82%	\$ 0.768
2005	\$ 8,270	\$ 155	\$ 8,115	0.67%	\$ 0.754
2006	\$ 8,115	\$ 160	\$ 7,955	0.55%	\$ 0.730
2007	\$ 16,133	\$ 165	\$ 15,968	0.96%	\$ 1.517
2008	\$ 15,727	\$ 275	\$ 15,452	0.91%	\$ 1.382
2009	\$ 15,303	\$ 229	\$ 15,074	0.98%	\$ 1.412
2010	\$ 14,847	\$ 250	\$ 14,597	1.03%	\$ 1.367
2011	\$ 14,896	\$ 279	\$ 14,617	1.03%	\$ 1.254
2012	\$ 14,524	\$ 1,086	\$ 13,438	0.94%	\$ 0.990

Note: Details regarding the City's outstanding debt can be found in the notes to the financial statements.

Note: Total adjusted tax levy is based on final assessed property values by Miami-Dade County Department of Property Appraisals Office after the Property Appraisals Adjustment Board has completed hearings on the tax roll; and before discounts.

(1) See Table 5 - Assessed Value and Estimated Actual Value of Taxable Property.

(2) See Table 13 - Demographic and Economic Statistics.

**CITY OF SOUTH MIAMI, FLORIDA**  
**DIRECT AND OVERLAPPING GOVERNMENTAL ACTIVITIES DEBT**  
September 30, 2012  
(amounts expressed in thousands)

Table 11

<u>Government Unit</u>	<u>Net Debt Outstanding</u>	<u>Estimated Percentage Applicable (1)</u>	<u>Amount Applicable to South Miami</u>
Miami-Dade County Schools (2)	\$ 222,945	2.31%	\$ 5,150
Miami-Dade County (3)	<u>1,043,496</u>	2.31%	<u>24,105</u>
Subtotal overlapping debt	1,266,441		29,255
City of South Miami direct debt	<u>15,505</u>	100.00%	<u>15,505</u>
Total direct and overlapping debt	<u>\$ 1,281,946</u>		<u>\$ 44,760</u>

Sources: (1) The percentage of overlapping debt applicable is estimated using taxable assessed property values. Applicable percentages were estimated by determining the portion of the County's taxable assessed value that is within the City's boundaries and dividing it by the County's total taxable assessed value.

(2) Miami-Dade County Schools, General Finance Department.

(3) Miami-Dade County, Finance Department; includes General Obligation and Special Obligation Bonds.

**CITY OF SOUTH MIAMI, FLORIDA**  
**LEGAL DEBT MARGIN INFORMATION**  
**LAST TEN FISCAL YEARS**  
 (amounts expressed in thousands)

	2003	2004	2005	2006	2007	2008	2009	2010	2011	2012
Debt limit	\$ 136,522	\$ 150,526	\$ 181,814	\$ 216,904	\$ 249,765	\$ 253,643	\$ 229,116	\$ 213,394	\$ 212,066	\$ 214,026
Total net debt applicable to limit (1)	8,555	8,415	8,270	8,115	16,133	15,727	15,303	14,847	14,896	14,524
Legal debt margin	\$ 127,967	\$ 142,111	\$ 173,544	\$ 208,789	\$ 233,632	\$ 237,916	\$ 213,813	\$ 198,547	\$ 197,170	\$ 199,502
Total net debt applicable to the limit as a percentage of debt limit	6.27%	5.59%	4.55%	3.74%	6.46%	6.20%	6.68%	6.96%	7.02%	6.79%

(1) Revenue Bonds were issued in fiscal year 2002 and 2007. In November 2006, the City through its Community Development Agency issued \$ 2,730,000 of Taxable Redevelopment Revenue Bonds.

**Legal Debt Margin Calculation for Fiscal Year 2012**

Assessed valuation of taxable real and personal property	\$ 1,426,837
Bonded debt limit - 15% of assessed value	\$ 214,026
Total ad valorem debt - Revenue Bonds	\$ 14,524
Amount of debt applicable	14,524
Legal debt margin	\$ 199,502

**CITY OF SOUTH MIAMI, FLORIDA  
DEMOGRAPHIC AND ECONOMIC STATISTICS  
LAST TEN FISCAL YEARS**

Table 13

Fiscal Year	Population (1)	Personal Income (Amounts Expressed in Thousands) (2)	Per Capita Personal Income (2)	Median Age (1)	School Enrollment (3)	Unemployment Rate (1)
2003	10,741	\$ 62,665	\$ 27,050	35.6	1,708	5.9
2004	10,759	\$ 64,765	\$ 27,744	35.6	1,708	5.4
2005	10,768	\$ 70,514	\$ 29,955	37.4	1,708	4.5
2006	10,891	\$ 74,534	\$ 31,347	37.4	1,708	3.8
2007	10,528	\$ 80,112	\$ 33,712	37.8	6,123	3.8
2008	11,183	\$ 85,979	\$ 36,081	38.2	5,957	5.8
2009	10,678	\$ 85,979	\$ 29,689	40.7	5,701	11.8
2010	10,678	\$ 88,955	\$ 29,689	40.7	3,500	12.1
2011	11,657	\$ 90,915	\$ 36,357	40.7	3,450	12.3
2012	13,576	\$ 96,958	\$ 37,834	36.7	3,397	8.8

Source: (1) Bestplaces.net/city/South\_Miami.

(2) U.S. Department of Commerce, Bureau of Economic Analysis and Bestplaces.net/city/South\_Miami.

(3) Miami-Dade County Public Schools Registrar's Office (does not include private schools).



**CITY OF SOUTH MIAMI, FLORIDA  
PRINCIPAL EMPLOYERS - MIAMI-DADE COUNTY, FLORIDA  
CURRENT YEAR AND SIX YEARS AGO**

Table 14

Employer	2012		Percentage of Total County Employment	2006		Percentage of Total County Employment
	Employees	Rank		Employees	Rank	
Miami-Dade County Public Schools	48,571	1	4.27%	54,387	1	4.81%
Miami-Dade County, Florida	29,000	2	2.39%	32,265	2	2.86%
Federal government	19,500	3	1.61%	20,100	3	1.78%
Florida State government	17,100	4	1.41%	18,900	4	1.67%
University of Miami	16,000	5	1.32%	-	-	-
Baptist Health South Florida	13,376	6	1.10%	10,300	6	0.91%
Jackson Health System	12,571	7	1.03%	11,700	5	1.04%
Publix Super Markets	10,800	8	0.89%	9,367	7	0.83%
American Airlines	9,000	9	0.74%	9,000	8	0.80%
Florida International University	8,000	10	0.66%	-	-	-
Miami Dade College	-		-	5,000	9	0.44%
Bellsouth	-		-	4,800	10	0.42%
	<u>183,918</u>		<u>15.42%</u>	<u>175,819</u>		<u>15.56%</u>

Note: Information prior to 2006 not available.

Source: The Beacon Council.  
Miami Dade County Labor Market Report

**CITY OF SOUTH MIAMI, FLORIDA**  
**FULL-TIME EQUIVALENT CITY GOVERNMENT EMPLOYEES BY FUNCTION**  
**LAST TEN FISCAL YEARS**

	2003	2004	2005	2006	2007	2008	2009	2010	2011	2012
<b>FUNCTION:</b>										
General government	17	17	17	20	27	29	30	28	25	18
Public safety:										
Police:										
Officers	51	46	49	49	51	45	49	49	51	51
Civilians	12	7	9	6	7	8	8	7	9	9
Building and zoning	13	12	13	18	17	16	18	16	17	14
Public works	16	21	19	24	26	25	24	26	23	25
Recreation and social services	26	32	32	25	9	15	14	13	10	10
Sanitation	12	12	12	10	10	10	10	9	9	9
<b>Total</b>	<b>147</b>	<b>147</b>	<b>151</b>	<b>152</b>	<b>147</b>	<b>148</b>	<b>153</b>	<b>148</b>	<b>144</b>	<b>136</b>

Source: City of South Miami Finance Department

**CITY OF SOUTH MIAMI, FLORIDA  
OPERATING INDICATORS BY FUNCTION  
LAST TEN FISCAL YEARS**

	2003	2004	2005	2006	2007	2008	2009	2010	2011	2012
<b>FUNCTION/PROGRAM:</b>										
Public safety:										
Police:										
Number of calls answered	11,185	10,973	11,005	11,526	11,136	10,655	11,274	10,893	11,609	11,744
Number of arrests	1,134	1,485	1,484	2,530	650	551	765	616	591	383
Number of uniformed officers	51	46	49	49	51	45	49	49	51	50
Building and zoning:										
Number of building permits issued	1,294	1,742	1,754	1,927	1,629	1,350	1,158	1,141	1,261	1,293
License/permit revenue generated	\$ 1,162,733	\$ 1,285,200	\$ 1,101,120	\$ 1,201,948	\$ 1,102,083	\$ 1,689,241	\$ 1,075,710	\$ 1,099,963	\$ 1,570,045	\$ 1,307,269
Occupational licenses issued	N/A	N/A	2,902	3,024	3,112	3,076	3,132	3,450	3,750	3,335
Culture and recreation:										
Number of senior meals served	26,880	28,700	32,730	42,949	38,522	30,712	35,776	28,420	27,300	27,612
Recreation revenues collected	\$ 55,965	\$ 71,379	\$ 79,209	\$ 76,129	\$ 94,176	\$ 138,456	\$ 184,196	\$ 241,919	\$ 199,147	\$ 233,624
Sanitation:										
Refuse collected (tons per month)	N/A	845	1,114	1,348	808	839	777	722	751	798

Sources: Various City departments

Note: Indicators are not available for the general government function.

N/A: Information not available for these years.

CITY OF SOUTH MIAMI, FLORIDA  
 CAPITAL ASSET STATISTICS BY FUNCTION/PROGRAM  
 LAST TEN FISCAL YEARS

	2003	2004	2005	2006	2007	2008	2009	2010	2011	2012
<b>FUNCTION/PROGRAM:</b>										
Public safety:										
Police:										
Police stations	1	1	1	1	1	1	1	1	1	1
Police vehicles	83	86	76	69	62	62	67	62	62	64
Public works:										
Streets (miles-paved)	47.41	47.41	47.41	47.41	47.41	47.41	46.80	46.80	46.80	46.80
Culture and recreation:										
Parks	8	8	8	10	10	10	10	12	12	12
Tennis courts	N/A	N/A	N/A	10	10	10	10	10	10	10
Baseball/football fields	N/A	N/A	N/A	6	7	7	7	7	7	7
Sanitation:										
Number of collection trucks	15	19	15	18	15	14	14	14	14	14

Sources: Various City departments.

Note: Indicators are not available for the general government function.

N/A: Information not available for these years.

# COMPLIANCE SECTION



INDEPENDENT AUDITORS' REPORT ON INTERNAL CONTROL OVER  
FINANCIAL REPORTING AND ON COMPLIANCE AND OTHER MATTERS  
BASED ON AN AUDIT OF FINANCIAL STATEMENTS PERFORMED IN  
ACCORDANCE WITH *GOVERNMENT AUDITING STANDARDS*

To the Honorable Mayor,  
Members of the City Commission and City Manager  
City of South Miami, Florida

We have audited the financial statements of the governmental activities, each major fund, and the aggregate remaining fund information of the City of South Miami, Florida (the "City"), as of and for the year ended September 30, 2012, which collectively comprise the City's basic financial statements and have issued our report thereon dated March 28, 2013. Our report includes a reference to other auditors. We conducted our audit in accordance with auditing standards generally accepted in the United States of America and the standards applicable to financial audits contained in *Government Auditing Standards*, issued by the Comptroller General of the United States. Other auditors audited the financial statements of the *Police Officers Retirement Trust Fund – Section 185 Plan*, as described in our report on the City's financial statements. This report does not include the results of the other auditors' testing of internal control over financial reporting or compliance and other matters that are reported on separately by those auditors.

Internal Control Over Financial Reporting

Management of the City is responsible for establishing and maintaining effective internal control over financial reporting. In planning and performing our audit, we considered the City's internal control over financial reporting as a basis for designing our auditing procedures for the purpose of expressing our opinions on the financial statements, but not for the purpose of expressing an opinion on the effectiveness of the City's internal control over financial reporting. Accordingly, we do not express an opinion on the effectiveness of the City's internal control over financial reporting.

A *deficiency in internal control* exists when the design or operation of a control does not allow management or employees, in the normal course of performing their assigned functions, to prevent, or detect and correct misstatements on a timely basis. A *material weakness* is a deficiency, or a combination of deficiencies, in internal control such that there is a reasonable possibility that a material misstatement of the City's financial statements will not be prevented, or detected and corrected on a timely basis.

Our consideration of internal control over financial reporting was for the limited purpose described in the first paragraph of this section and was not designed to identify all deficiencies in internal control over financial reporting that might be deficiencies, significant deficiencies, or material weaknesses. We did not identify any deficiencies in internal control over financial reporting that we consider to be material weaknesses, as defined above.

City of South Miami, Florida

Compliance and Other Matters

As part of obtaining reasonable assurance about whether the City's financial statements are free of material misstatement, we performed tests of its compliance with certain provisions of laws, regulations, contracts and grant agreements, noncompliance with which could have a direct and material effect on the determination of financial statement amounts. However, providing an opinion on compliance with those provisions was not an objective of our audit and, accordingly, we do not express such an opinion. The results of our tests disclosed no instances of noncompliance or other matters that are required to be reported under *Government Auditing Standards*.

This report is intended solely for the information and use of the City management, members of the City Commission, the State of Florida Office of the Auditor General, Federal and State awarding agencies and other grantor agencies and is not intended to be and should not be used by anyone other than these specified parties.

*Keefe, McCullough & Co., LLP*

KEEFE, McCULLOUGH & CO., LLP

Fort Lauderdale, Florida  
March 28, 2013



INDEPENDENT AUDITOR'S REPORT ON COMPLIANCE WITH REQUIREMENTS  
THAT COULD HAVE A DIRECT AND MATERIAL EFFECT ON EACH MAJOR PROGRAM  
AND ON INTERNAL CONTROL OVER COMPLIANCE IN ACCORDANCE WITH  
OMB CIRCULAR A-133

To the Honorable Mayor,  
Members of the City Commission and City Manager  
City of South Miami, Florida

Compliance

We have audited the compliance of the City of South Miami, Florida's (the "City") with the types of compliance requirements described in the *OMB Circular A-133 Compliance Supplement*, that could have a direct and material effect on the City's major Federal programs for the year ended September 30, 2012. The City's major Federal programs are identified in the summary of auditor's results section of the accompanying Schedule of Findings and Questioned Costs. Compliance with the requirements of laws, regulations, contracts, and grant agreements applicable to its major Federal programs is the responsibility of the City's management. Our responsibility is to express an opinion on the City's compliance based on our audit.

We conducted our audit of compliance in accordance with auditing standards generally accepted in the United States of America; the standards applicable to financial audits contained in *Government Auditing Standards*, issued by the Comptroller General of the United States; and OMB Circular A-133, *Audits of States, Local Governments, and Non-Profit Organizations*. Those standards and OMB Circular A-133, require that we plan and perform the audit to obtain reasonable assurance about whether noncompliance with the types of compliance requirements referred to above that could have a direct and material effect on a major Federal program occurred. An audit includes examining, on a test basis, evidence about the City's compliance with those requirements and performing such other procedures as we considered necessary in the circumstances. We believe that our audit provides a reasonable basis for our opinion. Our audit does not provide a legal determination of the City's compliance with those requirements.

In our opinion, the City complied, in all material respects, with the compliance requirements referred to above that could have a direct and material effect on its major Federal programs for the year ended September 30, 2012.

Internal Control over Compliance

Management of the City is responsible for establishing and maintaining effective internal control over compliance with the requirements of laws, regulations, contracts, and grants applicable to Federal programs. In planning and performing our audit, we considered the City's internal control over compliance with the requirements that could have a direct and material effect on a major Federal program in order to determine the auditing procedures for the purpose of expressing our opinion on compliance and to test and report on internal control over compliance in accordance with OMB Circular A-133, but not for the purpose of expressing an opinion on the effectiveness of internal control over compliance. Accordingly, we do not express an opinion on the effectiveness the City's internal control over compliance.



*A deficiency in internal control over compliance* exists when the design or operation of a control over compliance does not allow management or employees, in the normal course of performing their assigned functions, to prevent, or detect and correct, noncompliance with a type of compliance requirement of a Federal program on a timely basis. *A material weakness in internal control over compliance* is a deficiency, or combination of deficiencies, in internal control over compliance, such that there is a reasonable possibility that material noncompliance with a type of compliance requirement of a Federal program will not be prevented, or detected and corrected, on a timely basis.

Our consideration of internal control over compliance was for the limited purpose described in the first paragraph of this section and was not designed to identify all deficiencies in internal control that might be deficiencies, significant deficiencies, or material weaknesses in internal control over compliance. We did not identify any deficiencies in internal control over compliance that we consider to be material weaknesses, as defined above.

This report is intended solely for the information and use of the City management, members of the City Commission, the State of Florida Office of the Auditor General, Federal and other grant awarding agencies and is not intended to be and should not be used by anyone other than these specified parties.

*Keefe, McCullough & Co., LLP*

KEEFE, McCULLOUGH & CO., LLP

Fort Lauderdale, Florida  
March 28, 2013



## INDEPENDENT AUDITORS' REPORT TO CITY MANAGEMENT

To the Honorable Mayor,  
Members of the City Commission and City Manager  
City of South Miami, Florida

We have audited the basic financial statements of the City of South Miami, Florida (the "City"), as of and for the fiscal year ended September 30, 2012, and have issued our report thereon dated March 28, 2013.

We conducted our audit in accordance with auditing standards generally accepted in United States of America; the standards applicable to financial audits contained in *Government Auditing Standards*, issued by the Comptroller General of the United States; and OMB Circular A-133, *Audits of States, Local Governments, and Non-Profit Organizations*. We have issued our Independent Auditors' Report on Internal Control over Financial Reporting and Compliance and Other Matters Based on an Audit of the Financial Statements Performed in Accordance With *Government Auditing Standards*, Independent Auditors' Report on Compliance With Requirements That Could Have a Direct and Material Effect on Each Major Federal Program and on Internal Control over Compliance in Accordance with OMB Circular A-133, and Schedule of Findings and Questioned Costs. Disclosures in those reports and schedule, which are dated March 28, 2013, should be considered in conjunction with this management letter.

Additionally, our audit was conducted in accordance with the provisions of Chapter 10.550, Rules of the Auditor General, which governs the conduct of local governmental entity audits performed in the State of Florida. This letter includes the following information, which is not included in the aforementioned auditor's reports.

Section 10.554(l)(i)1., Rules of the Auditor General, requires that we determine whether or not corrective actions have been taken to address findings and recommendations made in the preceding annual financial audit report. There were no recommendations made in the preceding annual financial report.

Section 10.554 (l)(i)2., Rules of the Auditor General, requires our audit to include a review of the provisions of Section 218.415, Florida Statutes, regarding the investment of public funds. In connection with our audit, we determined that the City complied with Section 218.415, Florida Statutes.

Section 10.554(1)(i)3., Rules of the Auditor General, requires that we address in the management letter any recommendations to improve financial management. In connection with our audit, we did not have any such recommendations.

Section 10.554 (1)(i)4., Rules of the Auditor General, requires that we address violations of provisions of contracts or grant agreements, or abuse, that have occurred, or are likely to have occurred, that have an effect on the financial statement that is less than material but more than inconsequential. In connection with our audit, we did not have any such findings.

Section 10.554(1)(i)5., Rules of the Auditor General, provides that the auditor may, based on professional judgment, report the following matters that have an inconsequential effect on financial statements, considering both quantitative and qualitative factors: (1) violations of provisions of contracts or grant agreements, fraud, illegal acts, or abuse and (2) deficiencies in internal control that are not significant deficiencies. In connection with our audit, we did not have any such findings.

Section 10.554(1)(i)6., Rules of the Auditor General, requires that the name or official title and legal authority for the primary government and each component unit of the reporting entity be disclosed in this management letter, unless disclosed in the notes to the financial statements. The City of South Miami, Florida was incorporated by Chapter 5799, Laws of Florida, Acts of 1907. The City has one component unit; the City of South Miami Community Redevelopment Agency established by Ordinance number 12-97-1633 of the City of South Miami on April 15, 1997.

Section 10.554(1)(i)7.a., Rules of the Auditor General, requires a statement be included as to whether or not the local governmental entity has met one or more of the conditions described in Section 218,503(1), Florida Statutes, and identification of the specific condition(s) met. In connection with our audit, we determined that the City did not meet any of the conditions described in Section 218.503(1), Florida Statutes.

Section 10.554(1)(i)7.b., Rules of the Auditor General, requires that we determine whether the annual financial report for the City for the fiscal year ended September 30, 2012, filed with the Florida Department of Financial Services pursuant to Section 218.32(1)(a), Florida Statutes, is in agreement with the annual financial audit report for the fiscal year ended September 30, 2012. In connection with our audit, we determined that these two reports were in agreement.

Pursuant to Sections 10.554(1)(i)7.c. and 10.556(7), Rules of the Auditor General, we applied financial condition assessment procedures. It is management's responsibility to monitor the City's financial condition, and our financial condition assessment was based in part on representations made by management and the review of financial information provided by same.

Our management letter is intended solely for the information and use of the Legislative Auditing Committee, members of the Florida Senate and the Florida House of Representatives, the Florida Auditor General, Federal and other granting agencies, and applicable management, and is not intended to be and should not be used by anyone other than these specified parties.

*Keefe, McCullough & Co., LLP*

KEEFE, McCULLOUGH & CO., LLP

Fort Lauderdale, Florida  
March 28, 2013

**CITY OF SOUTH MIAMI, FLORIDA**  
**SCHEDULE OF EXPENDITURES OF FEDERAL AWARDS**  
For the Year Ended September 30, 2012

Federal Agency/ Pass-through Entity Federal Program	CFDA Number	Contract/Grant Number	Expenditures	Transfers to Subrecipients
<b>FEDERAL AGENCY NAME:</b>				
Direct Program:				
United States Department of Justice - Equitable Sharing Program	*	16.922	\$ 304,635	\$ -
<b>Indirect Programs:</b>				
United States Department of Justice - Passed through Miami Dade County - Edward Byrne Memorial Justice Assistance Grant Program		16.738      2012-JAGC-DADE-4-C4-015 16.738      2012-JAGD-DADE-11-C5-129	3,238 7,112	- -
			<u>10,350</u>	-
Executive Office of the President - Passed through City of Miami - High Intensity Drug Trafficking Areas Program		95.001      G12M10005A	59,673	-
United States Department of Housing and Urban Development - Passed through Miami Dade County - Community Development Block Grants/ Entitlement Grants			217,080 49,963	- -
	*	14.218		
	*	14.218	<u>267,043</u>	-

CITY OF SOUTH MIAMI, FLORIDA  
 SCHEDULE OF EXPENDITURES OF FEDERAL AWARDS  
 For the Year Ended September 30, 2012  
 (continued)

Federal Agency/ Pass-through Entity Federal Program	CFDA Number	Contract/Grant Number	Expenditures	Transfers to Subrecipients
<b>FEDERAL AGENCY NAME (continued):</b>				
Indirect Programs (continued):				
United States Department of Transportation - Passed through Florida Department of Transportation	20.205	APK63 426416-1	9,038	-
ARRA-Highway Planning and Construction			\$ 650,739	\$ -
Total expenditures of Federal awards			\$ 650,739	\$ -

\* Denotes a major program

CITY OF SOUTH MIAMI, FLORIDA  
NOTES TO SCHEDULE OF EXPENDITURES OF FEDERAL AWARDS  
For the Year Ended September 30, 2012

NOTE 1 – BASIS OF PRESENTATION

The accompanying Schedule of Expenditures of Federal Awards includes the federal grant activity of the City and is presented on the accrual basis of accounting. The information in this schedule is presented in accordance with the requirement of OMB Circular A-133, *Audits of States, Local Governments and Non-Profit Organizations*.. Therefore, some amounts presented in this schedule may differ from amounts presented in or used in the preparation of the basic financial statements.

NOTE 2 – CONTINGENCIES

The grant revenue amounts received are subject to audit and adjustment. If any expenditures or expenses are disallowed by the grantor agencies as a result of such an audit, any claim for reimbursement to the grantor agencies would become a liability of the City. In the opinion of management, all grant expenditures are in compliance with the terms of the grant agreements and applicable Federal and state laws and other applicable regulations.

NOTE 3 – CATALOG OF FEDERAL DOMESTIC ASSISTANCE

Complete Catalog of Federal Domestic Assistance (“CFDA”) numbers are presented for those programs for which such numbers were available. CFDA prefixes are presented for programs for which a complete CFDA number is not available.

**CITY OF SOUTH MIAMI, FLORIDA**  
**SCHEDULE OF FINDINGS AND QUESTIONED COSTS**  
For the Year Ended September 30, 2012

**A. SUMMARY OF AUDITORS' RESULTS**

1. The auditors' report expresses an unqualified opinion on the basic financial statements of City of South Miami, Florida.
2. No material weaknesses relating to the audit of the basic financial statements are reported in the Independent Auditors' Report on Internal Control over Financial Reporting and on Compliance and Other Matters Based on an Audit of Financial Statements Performed in Accordance with *Government Auditing Standards*.
3. No instances of noncompliance material to the financial statements of City of South Miami, Florida were disclosed during the audit.
4. No material weaknesses relating to the audit of the major Federal programs are reported in the Independent Auditors' Report on Compliance with Requirements That Could Have a Direct and Material Effect on Each Major Federal Program and on Internal Control over Compliance in Accordance with OMB Circular A-133.
5. The auditors' report on compliance for the major Federal programs for the City of South Miami, Florida expresses an unqualified opinion.
6. There are no findings relative to the major Federal programs for the City of South Miami, Florida reported in Part C of this schedule.
7. The project tested as major programs are as follows:

<u>Federal Programs:</u>	<u>Federal CFDA Number</u>
United States Department of Justice - Equitable Sharing Program	16.922
United States Department of Housing and Housing and Development - Community Development Block Grants /Entitlement Grants	14.218

8. The threshold for distinguishing Type A and Type B projects was \$ 300,000 for major Federal programs.
9. City of South Miami, Florida was not determined to be a low-risk auditee pursuant to OMB Circular A-133.

**B. FINDINGS - FINANCIAL STATEMENTS AUDIT**

No matters to be reported.

**C. FINDINGS AND QUESTIONED COSTS - MAJOR FEDERAL PROGRAMS**

No matters to be reported.

**CITY OF SOUTH MIAMI, FLORIDA**  
**SCHEDULE OF FINDINGS AND QUESTIONED COSTS**  
(continued)  
For the Year Ended September 30, 2012

**D. OTHER ISSUES**

1. No Summary Schedule of Prior Year Audit Findings is required because there were no prior year audit findings related to Federal programs.
2. No Corrective Action Plan is required because there were no findings required to be reported under the Federal Single Audit Act.